



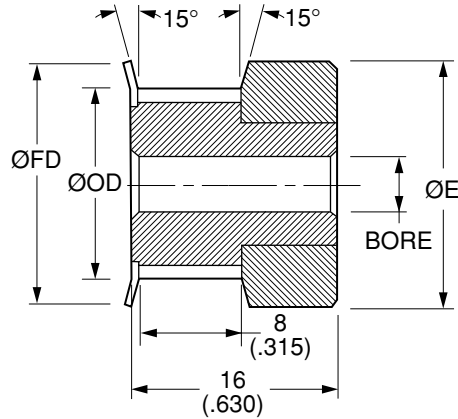
Quality
Transmission
Components

MXL Timing Belt Pulleys

**INCH Pitch .080" (2.03 mm)
FOR BELTS UP TO 1/4" OR 6.35 mm WIDE**



MATERIAL: 2024-T4 or 2024-T351
Aluminum Alloy
FINISH: Clear Anodize



NOTE: Dimensions in () are in inch.

Catalog Number	No. of Teeth	Bore (F8)	Pitch Diameter	Outside Diameter ØOD	Hub Diameter ØE	Flange Diameter ØFD
QPMMXLA25015F03	15	3 (.1181)	9.7 (.382)	9.19 (.362)	14 (.551)	14 (.551)
QPMMXLA25016F03	16	3 (.1181)	10.35 (.407)	9.84 (.387)	15 (.591)	15 (.591)
QPMMXLA25018F04	18	4 (.1575)	11.64 (.458)	11.13 (.438)	16 (.630)	15 (.591)
QPMMXLA25020F04	20	4 (.1575)	12.94 (.509)	12.43 (.489)	18 (.709)	18 (.709)

Bore Tolerance (F8): 3 mm $+0.020 \begin{pmatrix} +.0008 \\ +0.006 \end{pmatrix} \begin{pmatrix} +.0002 \\ +.0002 \end{pmatrix}$
4 mm $+0.028 \begin{pmatrix} +.0011 \\ +0.010 \end{pmatrix} \begin{pmatrix} +.0004 \\ +.0004 \end{pmatrix}$

O.D. Tolerance: 15 to 20 teeth $+0.05 \begin{pmatrix} +.002 \\ 0 \end{pmatrix} \begin{pmatrix} -.000 \\ -.000 \end{pmatrix}$

Larger number of teeth on the next page



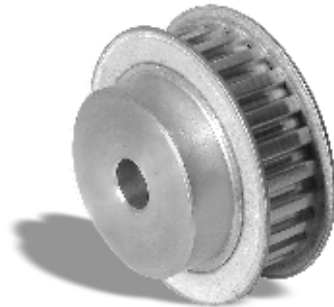


Quality
Transmission
Components

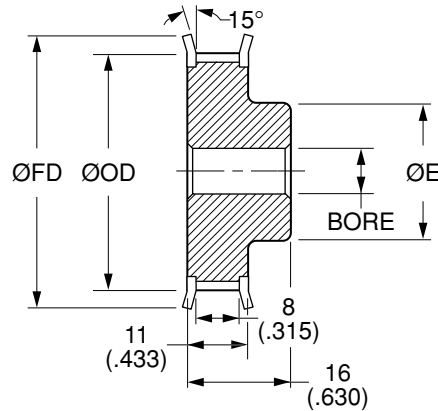
MXL Timing Belt Pulleys

**INCH Pitch .080" (2.03 mm)
FOR BELTS UP TO 1/4" OR 6.35 mm WIDE**

MXL TIMING BELT PULLEYS



MATERIAL: 2024-T4 or 2024-T351
Aluminum Alloy
FINISH: Clear Anodize



NOTE: Dimensions in () are in inch.

Catalog Number	No. of Teeth	Bore (F8)	Pitch Diameter	Outside Diameter ØOD	Hub Diameter ØE	Flange Diameter ØFD
QPMMXLA25021F04	21		13.58 (.535)	13.07 (.515)	10 (.394)	18 (.709)
QPMMXLA25022F04	22	4 (.1575)	14.23 (.560)	13.72 (.540)	10 (.394)	18 (.709)
QPMMXLA25024F04	24		15.52 (.611)	15.02 (.591)	11 (.433)	20 (.787)
QPMMXLA25025F04	25		16.17 (.637)	15.66 (.617)	12 (.472)	23 (.906)
QPMMXLA25026F04	26	4 (.1575)	16.82 (.662)	16.31 (.642)	12 (.472)	23 (.906)
QPMMXLA25028F04	28		18.11 (.713)	17.6 (.693)	12.5 (.492)	25 (.984)
QPMMXLA25030F06	30		19.4 (.764)	18.9 (.744)	13 (.512)	25 (.984)
QPMMXLA25032F06	32	6 (.2362)	20.7 (.815)	20.19 (.795)	15 (.591)	28 (1.102)
QPMMXLA25036F06	36		23.29 (.917)	22.78 (.897)	17 (.669)	28 (1.102)
QPMMXLA25040F06	40		25.87 (1.019)	25.36 (.999)	19 (.748)	31 (1.220)
QPMMXLA25042F06	42	6 (.2362)	27.17 (1.070)	26.66 (1.050)	21 (.827)	33 (1.299)
QPMMXLA25044F06	44		28.46 (1.120)	27.95 (1.100)	22 (.866)	35 (1.378)
QPMMXLA25048F06	48		31.05 (1.222)	30.54 (1.202)	24 (.945)	38 (1.496)
QPMMXLA25050F06	50	6 (.2362)	32.34 (1.273)	31.83 (1.253)	24 (.945)	38 (1.496)
QPMMXLA25060F06	60		38.81 (1.528)	30.3 (1.508)	31 (1.220)	44 (1.732)

Bore Tolerance (F8): 4 & 6 mm +0.028 (+.0011)
+0.010 (+.0004)

Larger number of teeth on the next page

O.D. Tolerance: 21 to 40 teeth +0.05 (+.002)
0 (-.000)
42 to 60 teeth +0.08 (+.003)
0 (-.000)

www.econobelt.com



Quality Transmission Components

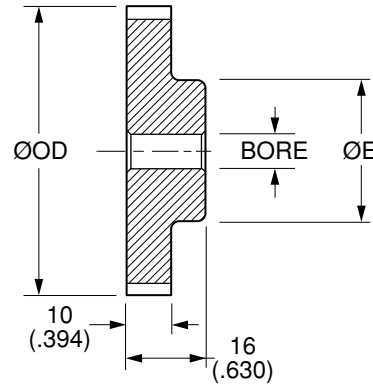
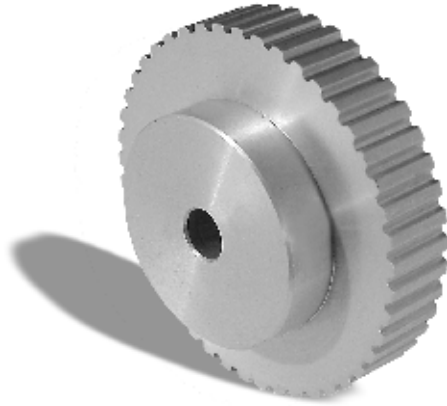
125 Railroad Avenue, Garden City Park, NY 11040-5016
Phone: (516) 437-6700 • Fax: (516) 328-3343
e-mail: support@econobelt.com



Quality
Transmission
Components

MXL Timing Belt Pulleys

**INCH Pitch .080" (2.03 mm)
FOR BELTS UP TO 1/4" OR 6.35 mm WIDE**



MATERIAL: 2024-T4 or 2024-T351
Aluminum Alloy
FINISH: Clear Anodize



NOTE: Dimensions in () are in inch.

Catalog Number	No. of Teeth	Bore (F8)	Pitch Diameter	Outside Diameter ØOD	Hub Diameter ØE
QPMMXLA25060N06	60	6 (.2362)	38.81 (1.528)	38.3 (1.508)	29 (1.142)
QPMMXLA25065N06	65		42.04 (1.655)	41.53 (1.635)	30 (1.181)
QPMMXLA25072N06	72	6 (.2362)	46.57 (1.833)	46.06 (1.813)	32 (1.260)
QPMMXLA25080N06	80		51.74 (2.037)	51.24 (2.017)	40 (1.575)
QPMMXLA25090N06	90	6 (.2362)	58.21 (2.292)	57.7 (2.272)	40 (1.575)
QPMMXLA25100N08	100	8 (.3150)	64.68 (2.546)	64.17 (2.526)	45 (1.772)
QPMMXLA25120N08	120	8 (.3150)	77.62 (3.056)	77.11 (3.036)	50 (1.969)

Bore Tolerance (F8): 6 mm +0.028 (+.0011)
+0.010 (+.0004)
8 mm +0.035 (+.0014)
+0.013 (+.0005)

O.D. Tolerance: 60 to 72 teeth +0.08 (+.003)
0 (-.000)
80 to 120 teeth +0.10 (+.004)
0 (-.000)

www.econobelt.com



Quality Transmission Components

125 Railroad Avenue, Garden City Park, NY 11040-5016
Phone: (516) 437-6700 • Fax: (516) 328-3343
e-mail: support@econobelt.com



Quality
Transmission
Components

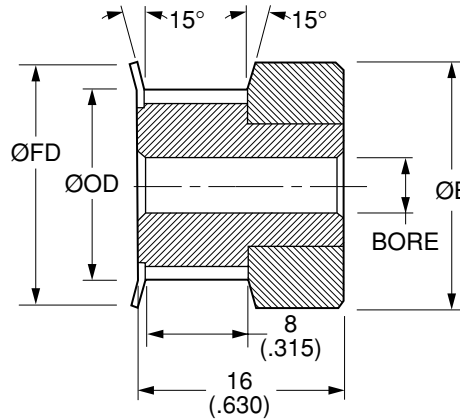
MXL Timing Belt Pulleys

INCH Pitch .080" (2.03 mm)
FOR BELTS UP TO 1/4" OR 6.35 mm WIDE

MXL TIMING BELT PULLEYS



MATERIAL: AISI 1045 Steel
FINISH: Black Oxide



NOTE: Dimensions in () are in inch.

Catalog Number	No. of Teeth	Bore (F8)	Pitch Diameter	Outside Diameter ØOD	Hub Diameter ØE	Flange Diameter ØFD
QPMMXLS25015F03	15	3 (.1181)	9.7 (.382)	9.19 (.362)	14 (.551)	14 (.551)
QPMMXLS25016F03	16		10.35 (.407)	9.84 (.387)	15 (.591)	15 (.591)
QPMMXLS25018F04	18	4 (.1575)	11.64 (.458)	11.13 (.438)	16 (.630)	15 (.591)
QPMMXLS25020F04	20		12.94 (.509)	12.43 (.489)	18 (.709)	18 (.709)

Bore Tolerance (F8): 3 mm $+0.020 \begin{pmatrix} +.0008 \\ +0.006 \end{pmatrix} \begin{pmatrix} +.0002 \\ +.0002 \end{pmatrix}$
4 mm $+0.028 \begin{pmatrix} +.0011 \\ +0.010 \end{pmatrix} \begin{pmatrix} +.0004 \\ +.0004 \end{pmatrix}$

Larger number of teeth on the next page

O.D. Tolerance: 15 to 20 teeth $+0.05 \begin{pmatrix} +.002 \\ 0 \end{pmatrix} \begin{pmatrix} +.002 \\ -.000 \end{pmatrix}$

www.econobelt.com



Quality Transmission Components

125 Railroad Avenue, Garden City Park, NY 11040-5016
Phone: (516) 437-6700 • Fax: (516) 328-3343
e-mail: support@econobelt.com



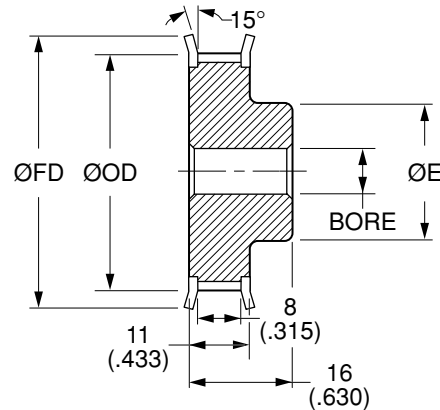
Quality
Transmission
Components

MXL Timing Belt Pulleys

**INCH Pitch .080" (2.03 mm)
FOR BELTS UP TO 1/4" OR 6.35 mm WIDE**



MATERIAL: AISI 1045 Steel
FINISH: Black Oxide



NOTE: Dimensions in () are in inch.

Catalog Number	No. of Teeth	Bore (F8)	Pitch Diameter	Outside Diameter ØOD	Hub Diameter ØE	Flange Diameter ØFD
QPMMXLS25021F04	21	4 (.1575)	13.58 (.535)	13.07 (.515)	10 (.394)	18 (.709)
QPMMXLS25022F04	22		14.23 (.560)	13.72 (.540)	10 (.394)	18 (.709)
QPMMXLS25024F04	24		15.52 (.611)	15.02 (.591)	11 (.433)	20 (.787)
QPMMXLS25025F04	25	4 (.1575)	16.17 (.637)	15.66 (.617)	12 (.472)	23 (.906)
QPMMXLS25026F04	26		16.82 (.662)	16.31 (.642)	12 (.472)	23 (.906)
QPMMXLS25028F04	28		18.11 (.713)	17.6 (.693)	12.5 (.492)	25 (.984)
QPMMXLS25030F06	30	6 (.2362)	19.4 (.764)	18.9 (.744)	13 (.512)	25 (.984)
QPMMXLS25032F06	32		20.7 (.815)	20.19 (.795)	15 (.591)	28 (1.102)
QPMMXLS25036F06	36		23.29 (.917)	22.78 (.897)	17 (.669)	28 (1.102)
QPMMXLS25040F06	40	6 (.2362)	25.87 (1.019)	25.36 (.999)	19 (.748)	31 (1.220)
QPMMXLS25042F06	42		27.17 (1.070)	26.66 (1.050)	21 (.827)	33 (1.299)
QPMMXLS25044F06	44		28.46 (1.120)	27.95 (1.100)	22 (.866)	35 (1.378)
QPMMXLS25048F06	48	6 (.2362)	31.05 (1.222)	30.54 (1.202)	24 (.945)	38 (1.496)
QPMMXLS25050F06	50		32.34 (1.273)	31.83 (1.253)	24 (.945)	38 (1.496)
QPMMXLS25060F06	60		38.81 (1.528)	38.3 (1.508)	31 (1.220)	44 (1.732)

Bore Tolerance (F8): 4 & 6 mm $+0.028 \begin{pmatrix} +.0011 \\ +0.010 \end{pmatrix}$

Larger number of teeth on the next page

O.D. Tolerance: 21 to 40 teeth $+0.05 \begin{pmatrix} +.002 \\ 0 \end{pmatrix}$
 42 to 60 teeth $+0.08 \begin{pmatrix} +.003 \\ 0 \end{pmatrix}$



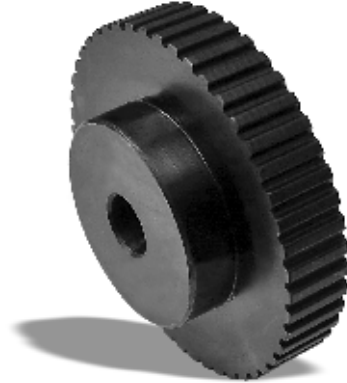


Quality
Transmission
Components

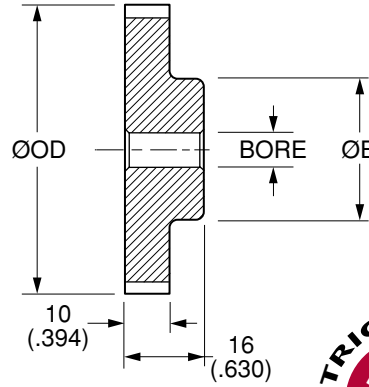
MXL Timing Belt Pulleys

**INCH Pitch .080" (2.03 mm)
FOR BELTS UP TO 1/4" OR 6.35 mm WIDE**

MXL TIMING BELT PULLEYS



MATERIAL: AISI 1045 Steel
FINISH: Black Oxide



NOTE: Dimensions in () are in inch.

Catalog Number	No. of Teeth	Bore (F8)	Pitch Diameter	Outside Diameter ØOD	Hub Diameter ØE
QPMMXLS25060N06	60	6 (.2362)	38.81 (1.528)	38.3 (1.508)	29 (1.142)
QPMMXLS25065N06	65		42.04 (1.655)	41.53 (1.635)	30 (1.181)
QPMMXLS25072N06	72	6 (.2362)	46.57 (1.833)	46.06 (1.813)	32 (1.260)
QPMMXLS25080N06	80		51.74 (2.037)	51.24 (2.017)	40 (1.575)
QPMMXLS25090N06	90	6 (.2362)	58.21 (2.292)	57.7 (2.272)	40 (1.575)
QPMMXLS25100N08	100	8 (.3150)	64.68 (2.546)	64.17 (2.526)	45 (1.772)
QPMMXLS25120N08	120	8 (.3150)	77.62 (3.056)	77.11 (3.036)	50 (1.969)

Bore Tolerance (F8): 6 mm $+0.028 \begin{pmatrix} +.0011 \\ +0.010 \end{pmatrix} \begin{pmatrix} +.0004 \\ +.0004 \end{pmatrix}$
8 mm $+0.035 \begin{pmatrix} +.0014 \\ +0.013 \end{pmatrix} \begin{pmatrix} +.0005 \\ +.0005 \end{pmatrix}$

O.D. Tolerance: 60 to 72 teeth $+0.08 \begin{pmatrix} +.003 \\ 0 \end{pmatrix} \begin{pmatrix} -.000 \\ -.000 \end{pmatrix}$
80 to 120 teeth $+0.10 \begin{pmatrix} +.004 \\ 0 \end{pmatrix} \begin{pmatrix} -.000 \\ -.000 \end{pmatrix}$

www.econobelt.com



Quality Transmission Components

125 Railroad Avenue, Garden City Park, NY 11040-5016
Phone: (516) 437-6700 • Fax: (516) 328-3343
e-mail: support@econobelt.com