





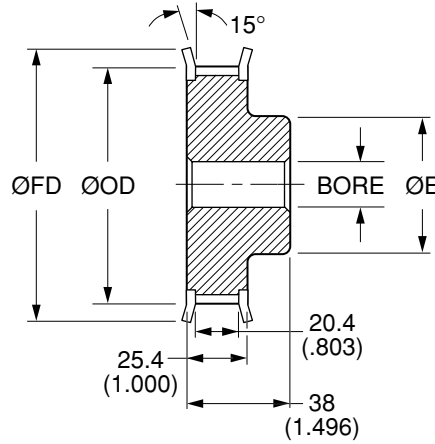
Quality  
Transmission  
Components

# L Timing Belt Pulleys

**INCH Pitch 3/8" (9.53 mm)  
FOR BELTS UP TO 3/4" OR 19.1 mm WIDE**



**MATERIAL:** AISI 1045 Steel  
**FINISH:** Black Oxide



**NOTE:** Dimensions in ( ) are in inches.

Catalog Number	No. of Teeth	Bore F8	Pitch Diameter	Outside Diameter ØOD	Hub Diameter ØE	Flange Diameter ØFD
QPMLS75010F08	10	8 (.3150)	30.32 (1.194)	29.56 (1.164)	20 (.787)	37 (1.457)
QPMLS75011F08	11		33.35 (1.313)	32.59 (1.283)	22 (.866)	
QPMLS75012F08	12	8 (.3150)	36.38 (1.432)	35.62 (1.402)	24 (.945)	43 (1.693)
QPMLS75013F08	13		39.41 (1.552)	38.65 (1.522)	28 (1.102)	
QPMLS75014F12	14	12 (.4724)	42.45 (1.671)	41.68 (1.641)	28 (1.102)	48 (1.890)
QPMLS75015F12	15		45.48 (1.790)	44.72 (1.760)	34 (1.339)	51 (2.008)
QPMLS75016F12	16	12 (.4724)	48.51 (1.910)	47.75 (1.880)	36 (1.417)	54 (2.126)
QPMLS75017F12	17		51.54 (2.029)	50.78 (1.999)		57 (2.244)
QPMLS75018F12	18	12 (.4724)	54.57 (2.149)	53.81 (2.119)	40 (1.575)	60 (2.362)
QPMLS75019F12	19		57.61 (2.268)	56.84 (2.238)	64 (2.520)	
QPMLS75020F12	20	12 (.4724)	60.64 (2.387)	59.88 (2.357)	40 (1.575)	66.5 (2.618)
QPMLS75021F12	21		63.67 (2.507)	62.91 (2.477)	45 (1.772)	70 (2.756)
QPMLS75022F12	22	12 (.4724)	66.7 (2.626)	65.94 (2.596)	45 (1.772)	75 (2.953)
QPMLS75023F12	23		69.73 (2.745)	68.97 (2.715)	55 (2.165)	79 (3.110)
QPMLS75024F12	24	12 (.4724)	72.77 (2.865)	72 (2.835)	55 (2.165)	79 (3.110)
QPMLS75025F12	25		75.8 (2.984)	75.04 (2.954)	58 (2.284)	82.5 (3.248)

**Bore Tolerance (F8):** 8 mm  $+0.035 \begin{pmatrix} +.0014 \\ +0.013 \end{pmatrix} \begin{pmatrix} +.0005 \end{pmatrix}$   
12 mm  $+0.043 \begin{pmatrix} +.0017 \\ +0.016 \end{pmatrix} \begin{pmatrix} +.0006 \end{pmatrix}$

Larger number of teeth on the next page

**O.D. Tolerance:** 10 to 17 teeth  $+0.08 \begin{pmatrix} +.003 \\ 0 \end{pmatrix} \begin{pmatrix} -.000 \end{pmatrix}$   
18 to 25 teeth  $+0.10 \begin{pmatrix} +.004 \\ 0 \end{pmatrix} \begin{pmatrix} -.000 \end{pmatrix}$

L TIMING BELT PULLEYS

[www.econobelt.com](http://www.econobelt.com)



Quality Transmission Components

125 Railroad Avenue, Garden City Park, NY 11040-5016  
Phone: (516) 437-6700 • Fax: (516) 328-3343  
e-mail: [support@econobelt.com](mailto:support@econobelt.com)

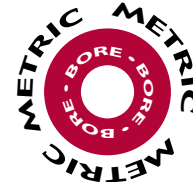
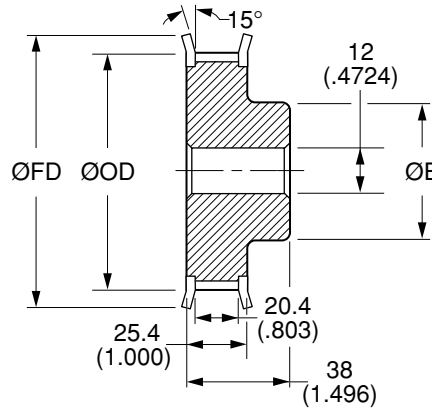


# L Timing Belt Pulleys

**INCH Pitch 3/8" (9.53 mm)  
FOR BELTS UP TO 3/4" OR 19.1 mm WIDE**



**MATERIAL:** AISI 1045 Steel  
**FINISH:** Black Oxide



**NOTE:** Dimensions in ( ) are in inches.

Catalog Number	No. of Teeth	Pitch Diameter	Outside Diameter ØOD	Hub Diameter ØE	Flange Diameter ØFD
QPMLS75026F12	26	78.83 (3.104)	78.07 (3.074)	58 (2.284)	86 (3.386)
QPMLS75027F12	27	81.86 (3.223)	81.1 (3.193)		
QPMLS75028F12	28	84.89 (3.342)	84.13 (3.312)	70 (2.756)	91 (3.583)
QPMLS75030F12	30	90.96 (3.581)	90.19 (3.551)		
QPMLS75032F12	32	97.02 (3.820)	96.26 (3.790)	70 (2.756)	102 (4.016)
QPMLS75033F12	33	100.05 (3.939)	99.29 (3.909)		
QPMLS75034F12	34	103.08 (4.058)	102.32 (4.028)	70 (2.756)	112 (4.409)
QPMLS75035F12	35	106.12 (4.178)	105.35 (4.148)		
QPMLS75036F12	36	109.15 (4.297)	108.39 (4.267)	70 (2.756)	115 (4.528)
QPMLS75038F12	38	115.21 (4.536)	114.45 (4.506)		
QPMLS75040F12	40	121.28 (4.775)	120.51 (4.745)	70 (2.756)	128 (5.039)
QPMLS75042F12	42	127.34 (5.013)	126.58 (4.983)		
QPMLS75044F12	44	133.4 (5.252)	132.64 (5.222)	70 (2.756)	142 (5.591)
QPMLS75045F12	45	136.44 (5.371)	135.67 (5.341)		
QPMLS75048F12	48	145.53 (5.730)	144.77 (5.700)	70 (2.756)	150 (5.906)

**Bore Tolerance (F8):** 12 mm +0.043 (+.0017)  
+0.016 (+.0006)

Larger number of teeth on the next page

**O.D. Tolerance:** 26 to 33 teeth +0.10 (+.004)  
0 (-.000)  
34 to 48 teeth +0.13 (+.005)  
0 (-.000)



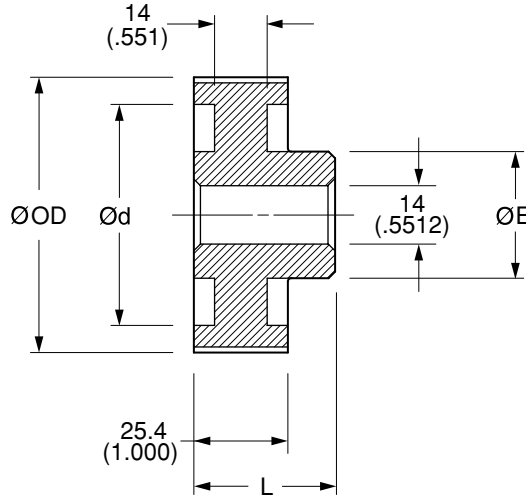


# L Timing Belt Pulleys

**INCH Pitch 3/8" (9.53 mm)  
FOR BELTS UP TO 3/4" OR 19.1 mm WIDE**



**MATERIAL:** AISI 1045 Steel  
**FINISH:** Black Oxide



**NOTE:** Dimensions in ( ) are in inches.

Catalog Number	No. of Teeth	Pitch Diameter	Outside Diameter ØOD	Overall Length L	Hub Diameter ØE	Ød
QPMLS75050N14	50	151.59 (5.968)	150.83 (5.938)	38 (1.496)	70 (2.756)	130 (5.118)
QPMLS75052N14	52	157.66 (6.207)	156.9 (6.177)	38 (1.496)	70 (2.756)	135 (5.315)
QPMLS75056N14	56	169.79 (6.684)	169.02 (6.654)	38 (1.496)	70 (2.756)	150 (5.906)
QPMLS75057N14	57	172.82 (6.804)	172.06 (6.774)	38 (1.496)	70 (2.756)	150 (5.906)
QPMLS75060N14	60	181.91 (7.162)	181.15 (7.132)	38 (1.496)	75 (2.953)	160 (6.299)
QPMLS75070N14	70	212.23 (8.356)	211.47 (8.326)	45 (1.771)	75 (2.953)	190 (7.480)
QPMLS75072N14	72	218.3 (8.594)	217.53 (8.564)	45 (1.771)	75 (2.953)	195 (7.677)
QPMLS75084N14	84	254.68 (10.027)	253.92 (9.997)	45 (1.771)	75 (2.953)	230 (9.055)
QPMLS75096N14	96	291.06 (11.459)	290.3 (11.429)	45 (1.771)	75 (2.953)	265 (10.433)

**Bore Tolerance (F8):** 14 mm  $+0.043 \begin{pmatrix} +.0017 \\ +0.016 \end{pmatrix} \begin{pmatrix} +.0017 \\ +.0006 \end{pmatrix}$

**O.D. Tolerance:** 50 to 57 teeth  $+0.13 \begin{pmatrix} +.005 \\ 0 \end{pmatrix} \begin{pmatrix} +.005 \\ -.000 \end{pmatrix}$   
60 to 96 teeth  $+0.15 \begin{pmatrix} +.006 \\ 0 \end{pmatrix} \begin{pmatrix} +.006 \\ -.000 \end{pmatrix}$

L TIMING BELT PULLEYS



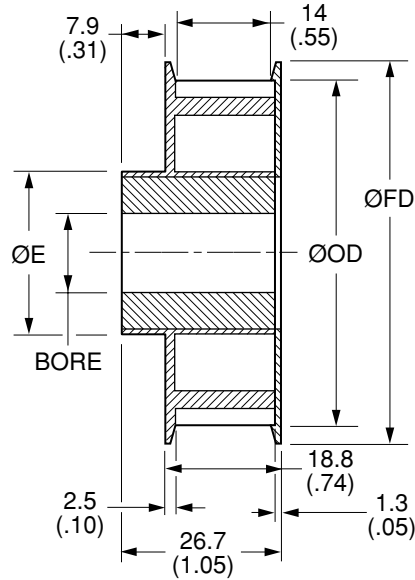


# L Timing Belt Pulleys

**INCH Pitch 3/8" (9.53 mm)  
FOR BELTS UP TO 1/2" OR 12.7 mm WIDE**



**MATERIAL:**  
Pulley - Nylon – Black, Fiberglass Reinforced  
Insert - Aluminum



**NOTE:** Dimensions in ( ) are in inches.

Catalog Number	No. of Teeth	Bore	P.D.	ØOD ±0.13 (±.005)	Hub Diameter ØE	Flange Diameter ØFD
QPMLN50010F06 QPMLN50010F08 QPMLN50010F10	10	6 (.236) 8 (.315) 10 (.394)	30.33 (1.194)	29.57 (1.164)	22.4 (.88)	37.8 (1.49)
QPMLN50011F06 QPMLN50011F08 QPMLN50011F10	11	6 (.236) 8 (.315) 10 (.394)	33.35 (1.313)	32.59 (1.283)	22.4 (.88)	41.4 (1.63)
QPMLN50012F06 QPMLN50012F08 QPMLN50012F10	12	6 (.236) 8 (.315) 10 (.394)	36.37 (1.432)	35.61 (1.402)	22.4 (.88)	43.9 (1.73)
QPMLN50013F06 QPMLN50013F08 QPMLN50013F10	13	6 (.236) 8 (.315) 10 (.394)	39.42 (1.552)	38.66 (1.522)	25.4 (1.00)	45.5 (1.79)
QPMLN50014F06 QPMLN50014F08 QPMLN50014F10 QPMLN50014F12	14	6 (.236) 8 (.315) 10 (.394) 12 (.472)	42.44 (1.671)	41.68 (1.641)	31.8 (1.25)	50.8 (2.00)

**Bore Tolerance:** 6 & 8 mm +0.03 (+.0010)  
0 (-.0000)  
10 mm +0.04 (+.0013)  
-0.01 (-.0003)  
12 mm +0.05 (+.0017)  
+0.01 (+.0006)

Larger number of teeth on the next page

Other bore sizes available on special request.  
See page 1-79 thru 1-81



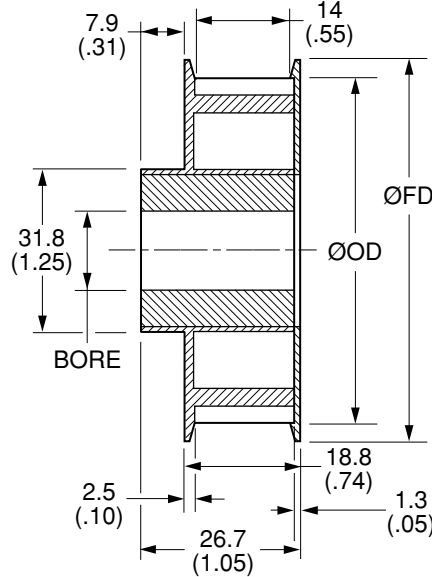


# L Timing Belt Pulleys

**INCH Pitch 3/8" (9.53 mm)  
FOR BELTS UP TO 1/2" OR 12.7 mm WIDE**



**MATERIAL:**  
Pulley - Nylon – Black, Fiberglass Reinforced  
Insert - Aluminum



**NOTE:** Dimensions in ( ) are in inches.

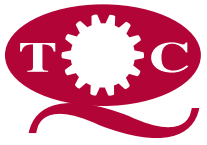
Catalog Number	No. of Teeth	Bore	P.D.	ØOD ±0.13 (±.005)	Flange Diameter ØFD
QPMLN50015F06	15	6 (.236)	45.47 (1.790)	44.7 (1.760)	53.8 (2.12)
QPMLN50015F08		8 (.315)			
QPMLN50015F10		10 (.394)			
QPMLN50015F12		12 (.472)			
QPMLN50016F06	16	6 (.236)	48.51 (1.910)	47.75 (1.880)	56.4 (2.22)
QPMLN50016F08		8 (.315)			
QPMLN50016F10		10 (.394)			
QPMLN50016F12		12 (.472)			
QPMLN50017F06	17	6 (.236)	51.54 (2.029)	50.78 (1.999)	59.4 (2.34)
QPMLN50017F08		8 (.315)			
QPMLN50017F10		10 (.394)			
QPMLN50017F12		12 (.472)			

**Bore Tolerance:** 6 & 8 mm +0.03 (+.0010)  
0 (-.0000)  
10 mm +0.04 (+.0013)  
-0.01 (-.0003)  
12 mm +0.05 (+.0017)  
+0.01 (+.0006)

Larger number of teeth on the next page

Other bore sizes available on special request.  
See page 1-81, 82



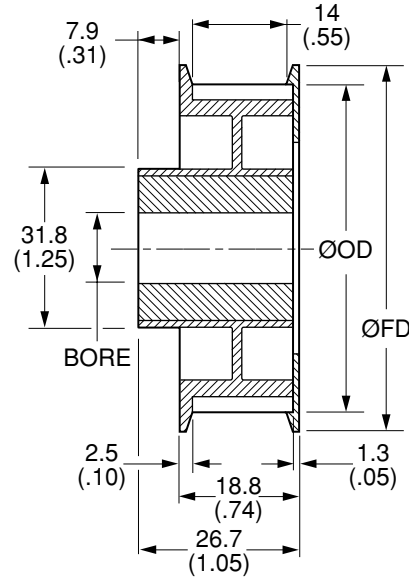


# L Timing Belt Pulleys

**INCH Pitch 3/8" (9.53 mm)  
FOR BELTS UP TO 1/2" OR 12.7 mm WIDE**



**MATERIAL:**  
Pulley - Nylon – Black, Fiberglass Reinforced  
Insert - Aluminum



**NOTE:** Dimensions in ( ) are in inches.

Catalog Number	No. of Teeth	Bore	P.D.	ØOD ±0.13 (±.005)	Flange Diameter ØFD
QPMLN50018F06	18	6 (.236)	54.58 (2.149)	53.82 (2.119)	62.7 (2.47)
QPMLN50018F08		8 (.315)			
QPMLN50018F10		10 (.394)			
QPMLN50018F12		12 (.472)			
QPMLN50019F06	19	6 (.236)	57.61 (2.268)	56.85 (2.238)	63.5 (2.50)
QPMLN50019F08		8 (.315)			
QPMLN50019F10		10 (.394)			
QPMLN50019F12		12 (.472)			
QPMLN50020F06	20	6 (.236)	60.63 (2.387)	59.87 (2.357)	69.6 (2.74)
QPMLN50020F08		8 (.315)			
QPMLN50020F10		10 (.394)			
QPMLN50020F12		12 (.472)			
QPMLN50021F06	21	6 (.236)	63.68 (2.507)	62.92 (2.477)	72.4 (2.85)
QPMLN50021F08		8 (.315)			
QPMLN50021F10		10 (.394)			
QPMLN50021F12		12 (.472)			

**Bore Tolerance:** 6 & 8 mm +0.03 (+.0010)  
0 (-.0000)  
10 mm +0.04 (+.0013)  
-0.01 (-.0003)  
12 mm +0.05 (+.0017)  
+0.01 (+.0006)

Larger number of teeth on the next page

Other bore sizes available on special request. See page 1-83, 84





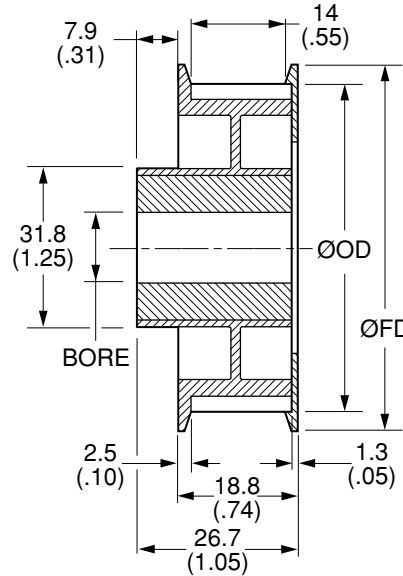
# L Timing Belt Pulleys

**INCH Pitch 3/8" (9.53 mm)  
FOR BELTS UP TO 1/2" OR 12.7 mm WIDE**



**MATERIAL:**

**Pulley** - Nylon – Black, Fiberglass Reinforced  
**Insert** - Aluminum



**NOTE:** Dimensions in ( ) are in inches.

Catalog Number	No. of Teeth	Bore	P.D.	ØOD ±0.13 (±.005)	Flange Diameter ØFD
QPMLN50022F06	22	6 (.236)	66.7 (2.626)	65.94 (2.596)	75.2 (2.96)
QPMLN50022F08		8 (.315)			
QPMLN50022F10		10 (.394)			
QPMLN50022F12		12 (.472)			
QPMLN50024F08	24	8 (.315)	72.77 (2.865)	72.01 (2.835)	80 (3.15)
QPMLN50024F10		10 (.394)			
QPMLN50024F12		12 (.472)			
QPMLN50024F16		16 (.630)			
QPMLN50028F08	28	8 (.315)	84.89 (3.342)	84.12 (3.312)	90.2 (3.55)
QPMLN50028F10		10 (.394)			
QPMLN50028F12		12 (.472)			
QPMLN50028F16		16 (.630)			
QPMLN50030F08	30	8 (.315)	90.96 (3.581)	90.2 (3.551)	96 (3.78)
QPMLN50030F10		10 (.394)			
QPMLN50030F12		12 (.472)			
QPMLN50030F16		16 (.630)			
QPMLN50032F08	32	8 (.315)	97.03 (3.820)	96.27 (3.790)	102.9 (4.05)
QPMLN50032F10		10 (.394)			
QPMLN50032F12		12 (.472)			
QPMLN50032F16		16 (.630)			

**Bore Tolerance:** 6 & 8 mm +0.03 (+.0010) 16 mm +0.04 (+.0015)  
 0 (-.0000) +0.01 (+.0005)  
 10 mm +0.04 (+.0013)  
 -0.01 (-.0003)  
 12 mm +0.05 (+.0017)  
 +0.01 (+.0006)

Other bore sizes available on special request. See page 1-85 thru 1-87



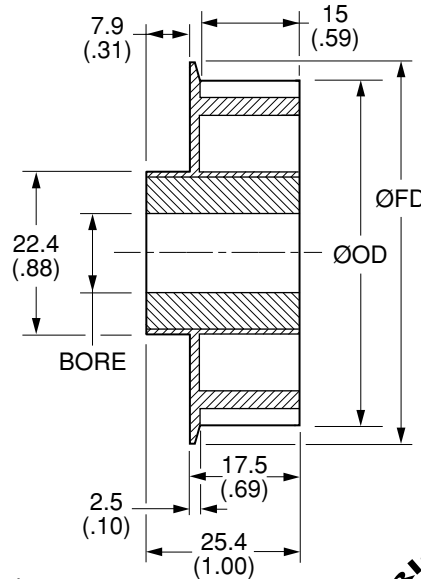


# L Timing Belt Pulleys

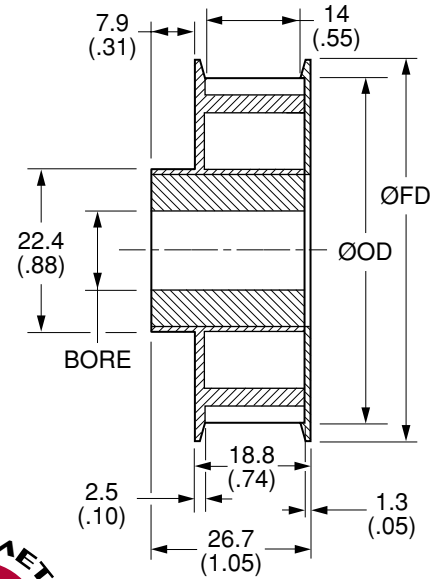
**INCH Pitch 3/8" (9.53 mm)  
FOR BELTS UP TO 1/2" OR 12.7 mm WIDE**



**MATERIAL:**  
Pulley - Nylon – Black, Fiberglass Reinforced  
Insert - Aluminum



**Fig. 1  
SINGLE FLANGE**



**Fig. 2  
DOUBLE FLANGE**



These bore sizes available on special request

**NOTE:** Dimensions in ( ) are in inches.

Catalog Number	No. of Teeth	Fig. No.	Bore	P.D.	ØOD ±0.13 (±.005)	Flange Dia. ØFD
QPMLN50010S06	10	1	6 (.236)	30.33 (1.194)	29.57 (1.164)	37.8 (1.49)
QPMLN50010S08		1	8 (.315)			
QPMLN50010S10		1	10 (.394)			
QPMLN50010S12		1	12 (.472)			
QPMLN50010F12		2	12 (.472)			
QPMLN50011S06	11	1	6 (.236)	33.35 (1.313)	32.59 (1.283)	41.4 (1.63)
QPMLN50011S08		1	8 (.315)			
QPMLN50011S10		1	10 (.394)			
QPMLN50011S12		1	12 (.472)			
QPMLN50011F12		2	12 (.472)			

**Bore Tolerance:** 6 & 8 mm +0.03 (+.0010)  
0 (-.0000)  
10 mm +0.04 (+.0013)  
-0.01 (-.0003)  
12 mm +0.05 (+.0017)  
+0.01 (+.0006)

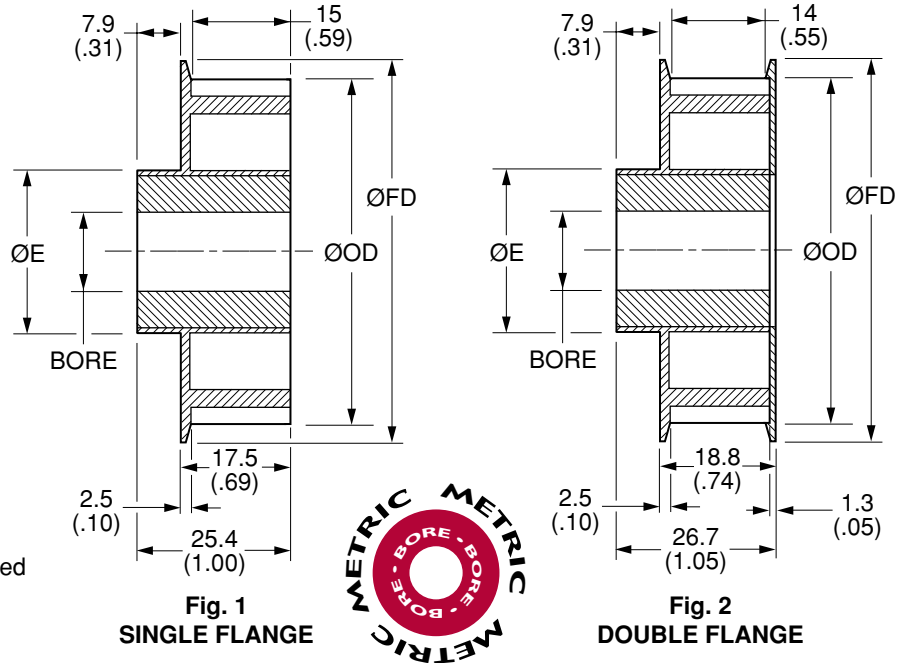
Larger number of teeth  
on the next page





# L Timing Belt Pulleys

**INCH Pitch 3/8" (9.53 mm)  
FOR BELTS UP TO 1/2" OR 12.7 mm WIDE**



**MATERIAL:**  
Pulley - Nylon – Black, Fiberglass Reinforced  
Insert - Aluminum



These bore sizes available on special request

NOTE: Dimensions in ( ) are in inches.

Catalog Number	No. of Teeth	Fig. No.	Bore	P.D.	$\text{ØOD} \pm 0.13 (\pm 0.005)$	Hub Diameter $\text{ØE}$	Flange Diameter $\text{ØFD}$
QPMLN50012S06	12	1	6 (.236)	36.37 (1.432)	35.61 (1.402)	22.4 (.88)	43.9 (1.73)
QPMLN50012S08		1	8 (.315)				
QPMLN50012S10		1	10 (.394)				
QPMLN50012S12		1	12 (.472)				
QPMLN50012F12		2	12 (.472)				
QPMLN50013S06	13	1	6 (.236)	39.42 (1.552)	38.66 (1.522)	25.4 (1.00)	45.5 (1.79)
QPMLN50013S08		1	8 (.315)				
QPMLN50013S10		1	10 (.394)				
QPMLN50013S12		1	12 (.472)				
QPMLN50013F12		2	12 (.472)				

**Bore Tolerance:** 6 & 8 mm  $+0.03 \begin{pmatrix} +.0010 \\ 0 \end{pmatrix} \begin{pmatrix} -.0000 \end{pmatrix}$   
 10 mm  $+0.04 \begin{pmatrix} +.0013 \\ -0.01 \end{pmatrix} \begin{pmatrix} -.0003 \end{pmatrix}$   
 12 mm  $+0.05 \begin{pmatrix} +.0017 \\ +0.01 \end{pmatrix} \begin{pmatrix} +.0006 \end{pmatrix}$

Larger number of teeth on the next page



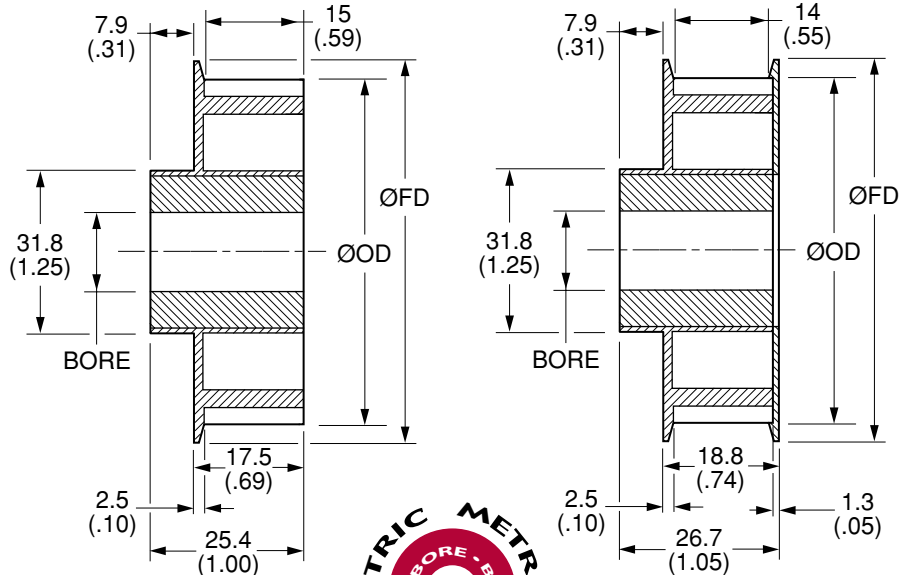


# L Timing Belt Pulleys

**INCH Pitch 3/8" (9.53 mm)  
FOR BELTS UP TO 1/2" OR 12.7 mm WIDE**



**MATERIAL:**  
Pulley - Nylon – Black, Fiberglass Reinforced  
Insert - Aluminum



L TIMING BELT PULLEYS

**These bore sizes available on special request** NOTE: Dimensions in ( ) are in inches.

Catalog Number	No. of Teeth	Fig. No.	Bore	P.D.	ØOD ±0.13 (±.005)	Flange Dia. ØFD
QPMLN50014S06	14	1	6 (.236)	42.44 (1.671)	41.68 (1.641)	50.8 (2.00)
QPMLN50014S08		1	8 (.315)			
QPMLN50014S10		1	10 (.394)			
QPMLN50014S12		1	12 (.472)			
QPMLN50014S16		1	16 (.630)			
QPMLN50014F16		2	16 (.630)			
QPMLN50015S06	15	1	6 (.236)	45.47 (1.790)	44.7 (1.760)	53.8 (2.12)
QPMLN50015S08		1	8 (.315)			
QPMLN50015S10		1	10 (.394)			
QPMLN50015S12		1	12 (.472)			
QPMLN50015S16		1	16 (.630)			
QPMLN50015F16		2	16 (.630)			

**Bore Tolerance:** 6 & 8 mm +0.03 (+.0010)  
0 (-.0000)  
10 mm +0.04 (+.0013)  
-0.01 (-.0003)  
12 mm +0.05 (+.0017)  
+0.01 (+.0006)  
16 mm +0.04 (+.0015)  
+0.01 (+.0005)

Larger number of teeth on the next page





# L Timing Belt Pulleys

INCH Pitch 3/8" (9.53 mm)  
FOR BELTS UP TO 1/2" OR 12.7 mm WIDE

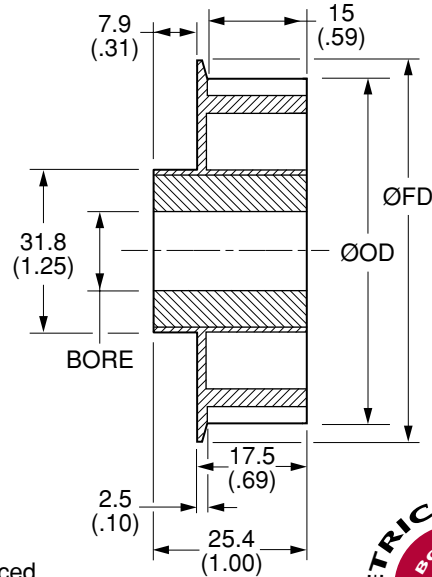


Fig. 1  
SINGLE FLANGE

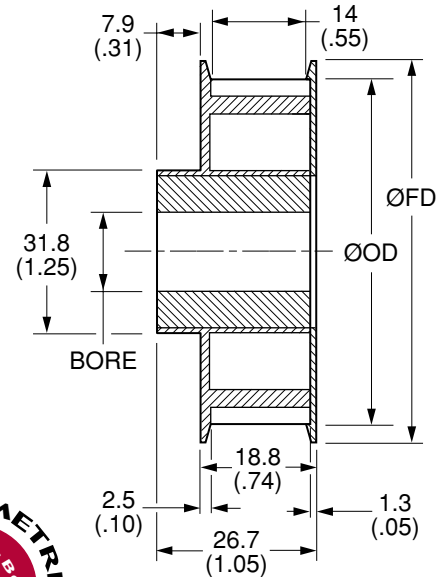


Fig. 2  
DOUBLE FLANGE

**MATERIAL:**  
Pulley - Nylon – Black, Fiberglass Reinforced  
Insert - Aluminum



These bore sizes available on special request

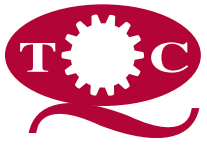
NOTE: Dimensions in ( ) are in inches.

Catalog Number	No. of Teeth	Fig. No.	Bore	P.D.	ØOD ±0.13 (±.005)	Flange Dia. ØFD
QPMLN50016S06	16	1	6 (.236)	48.51 (1.910)	47.75 (1.880)	56.4 (2.22)
QPMLN50016S08		1	8 (.315)			
QPMLN50016S10		1	10 (.394)			
QPMLN50016S12		1	12 (.472)			
QPMLN50016S16		1	16 (.630)			
QPMLN50016F16		2	16 (.630)			
QPMLN50017S06	17	1	6 (.236)	51.54 (2.029)	50.78 (1.999)	59.4 (2.34)
QPMLN50017S08		1	8 (.315)			
QPMLN50017S10		1	10 (.394)			
QPMLN50017S12		1	12 (.472)			
QPMLN50017S16		1	16 (.630)			
QPMLN50017F16		2	16 (.630)			

**Bore Tolerance:** 6 & 8 mm +0.03 (+.0010)  
0 (-.0000)  
10 mm +0.04 (+.0013)  
-0.01 (-.0003)  
12 mm +0.05 (+.0017)  
+0.01 (+.0006)  
16 mm +0.04 (+.0015)  
+0.01 (+.0005)

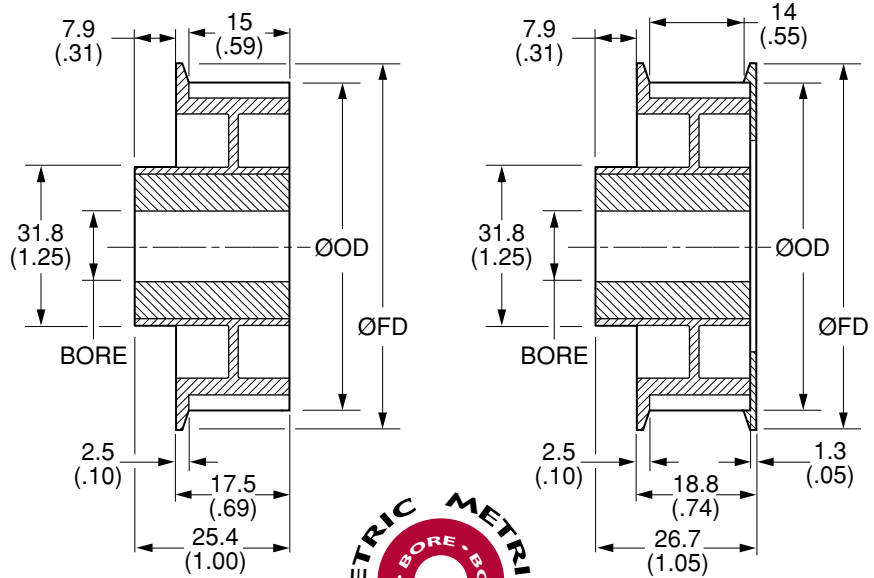
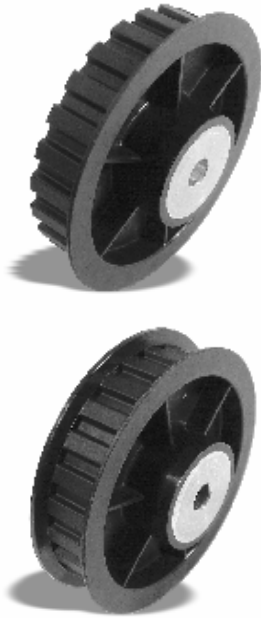
Larger number of teeth on the next page





# L Timing Belt Pulleys

**INCH Pitch 3/8" (9.53 mm)  
FOR BELTS UP TO 1/2" OR 12.7 mm WIDE**



**Fig. 1  
SINGLE FLANGE**

**Fig. 2  
DOUBLE FLANGE**

**MATERIAL:**

**Pulley** - Nylon – Black, Fiberglass Reinforced  
**Insert** - Aluminum



These bore sizes available on special request

NOTE: Dimensions in ( ) are in inches.

Catalog Number	No. of Teeth	Fig. No.	Bore	P.D.	ØOD ±0.13 (±.005)	Flange Dia. ØFD
QPMLN50018S06	18	1	6 (.236)	54.58 (2.149)	53.82 (2.119)	62.7 (2.47)
QPMLN50018S08		1	8 (.315)			
QPMLN50018S10		1	10 (.394)			
QPMLN50018S12		1	12 (.472)			
QPMLN50018S16		1	16 (.630)			
QPMLN50018F16		2	16 (.630)			
QPMLN50018S20		1	20 (.787)			
QPMLN50018F20		2	20 (.787)			
QPMLN50019S06	19	1	6 (.236)	57.61 (2.268)	56.85 (2.238)	63.5 (2.50)
QPMLN50019S08		1	8 (.315)			
QPMLN50019S10		1	10 (.394)			
QPMLN50019S12		1	12 (.472)			
QPMLN50019S16		1	16 (.630)			
QPMLN50019F16		2	16 (.630)			
QPMLN50019S20		1	20 (.787)			
QPMLN50019F20		2	20 (.787)			

**Bore Tolerance:** 6 & 8 mm +0.03 (+.0010) 0 (-.0000) 10 mm +0.04 (+.0013) -0.01 (-.0003) 12 mm +0.05 (+.0017) +0.01 (+.0006) 16 mm +0.04 (+.0015) +0.01 (+.0005) 20 mm +0.03 (+.0011) 0 (+.0001)

Larger number of teeth on the next page





# L Timing Belt Pulleys

INCH Pitch 3/8" (9.53 mm)  
FOR BELTS UP TO 1/2" OR 12.7 mm WIDE

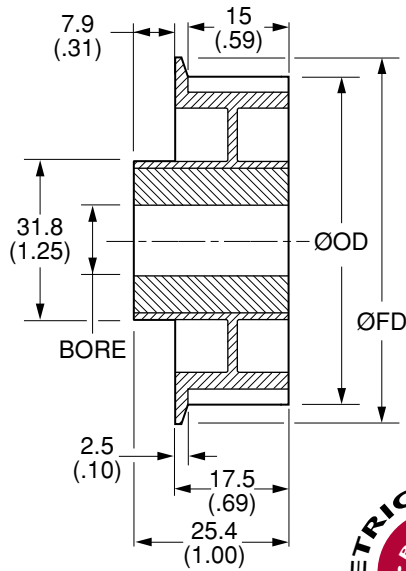
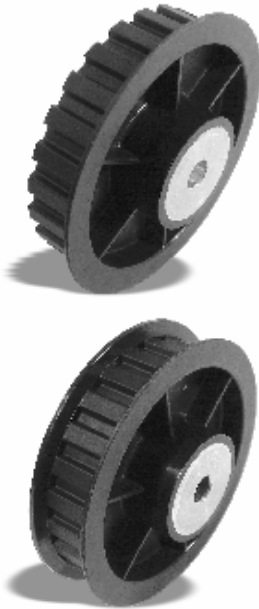


Fig. 1  
SINGLE FLANGE

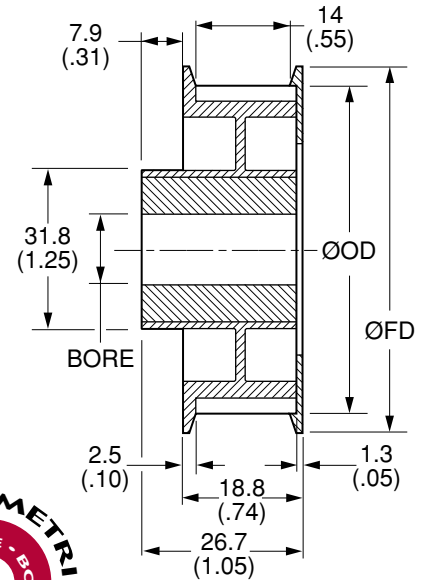
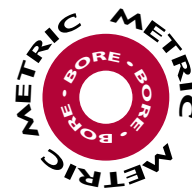


Fig. 2  
DOUBLE FLANGE

**MATERIAL:**

Pulley - Nylon – Black, Fiberglass Reinforced  
Insert - Aluminum

These bore sizes available on special request

NOTE: Dimensions in ( ) are in inches.

Catalog Number	No. of Teeth	Fig. No.	Bore	P.D.	ØOD ±0.13 (±.005)	Flange Dia. ØFD
QPMLN50020S06	20	1	6 (.236)	60.63 (2.387)	59.87 (2.357)	69.6 (2.74)
QPMLN50020S08		1	8 (.315)			
QPMLN50020S10		1	10 (.394)			
QPMLN50020S12		1	12 (.472)			
QPMLN50020S16		1	16 (.630)			
QPMLN50020F16		2	16 (.630)			
QPMLN50020S20		1	20 (.787)			
QPMLN50020F20		2	20 (.787)			
QPMLN50021S06	21	1	6 (.236)	63.68 (2.507)	62.92 (2.477)	72.4 (2.85)
QPMLN50021S08		1	8 (.315)			
QPMLN50021S10		1	10 (.394)			
QPMLN50021S12		1	12 (.472)			
QPMLN50021S16		1	16 (.630)			
QPMLN50021F16		2	16 (.630)			
QPMLN50021S20		1	20 (.787)			
QPMLN50021F20		2	20 (.787)			

**Bore Tolerance:** 6 & 8 mm +0.03 (+.0010) 16 mm +0.04 (+.0015)  
0 (-.0000) +0.01 (+.0005)  
10 mm +0.04 (+.0013) 20 mm +0.03 (+.0011)  
-0.01 (-.0003) 0 (+.0001)  
12 mm +0.05 (+.0017)  
+0.01 (+.0006)

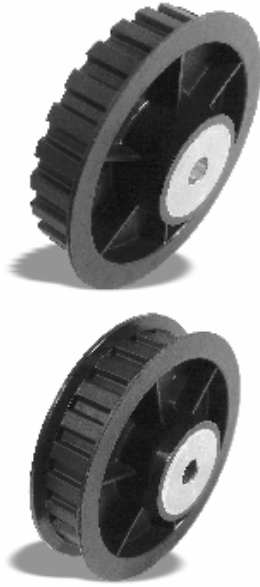
Larger number of teeth  
on the next page





# L Timing Belt Pulleys

INCH Pitch 3/8" (9.53 mm)  
FOR BELTS UP TO 1/2" OR 12.7 mm WIDE



**MATERIAL:**

Pulley - Nylon – Black, Fiberglass Reinforced  
Insert - Aluminum

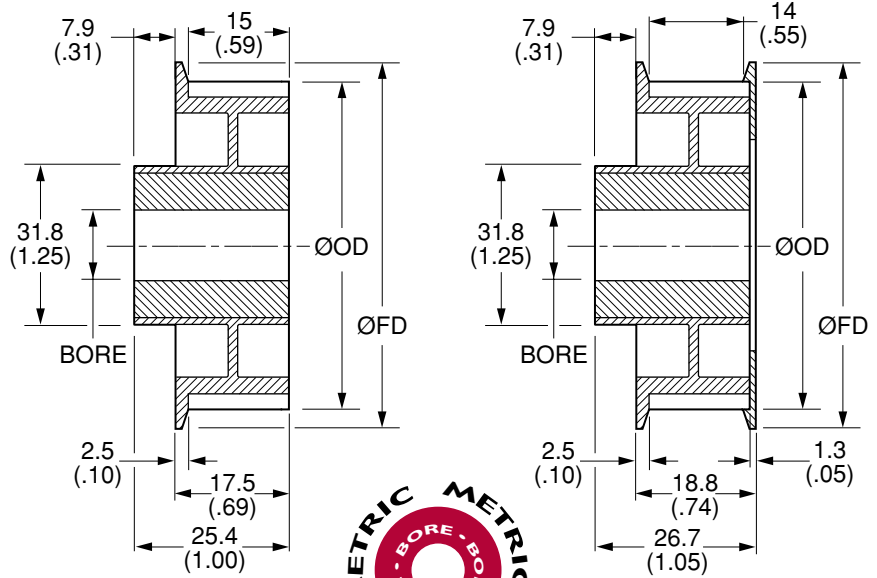


Fig. 1  
SINGLE FLANGE

Fig. 2  
DOUBLE FLANGE



These bore sizes available on special request

NOTE: Dimensions in ( ) are in inches.

Catalog Number	No. of Teeth	Fig. No.	Bore	P.D.	ØOD ±0.13 (±.005)	Flange Dia. ØFD
QPMLN50022S06	22	1	6 (.236)	66.7 (2.626)	65.94 (2.596)	75.2 (2.96)
QPMLN50022S08		1	8 (.315)			
QPMLN50022S10		1	10 (.394)			
QPMLN50022S12		1	12 (.472)			
QPMLN50022S16		1	16 (.630)			
QPMLN50022F16		2	16 (.630)			
QPMLN50022S20		1	20 (.787)			
QPMLN50022F20		2	20 (.787)			
QPMLN50024S06	24	1	6 (.236)	72.77 (2.865)	72.01 (2.835)	80 (3.15)
QPMLN50024F06		2	6 (.236)			
QPMLN50024S08		1	8 (.315)			
QPMLN50024S10		1	10 (.394)			
QPMLN50024S12		1	12 (.472)			
QPMLN50024S16		1	16 (.630)			
QPMLN50024S20		1	20 (.787)			
QPMLN50024F20		2	20 (.787)			

**Bore Tolerance:** 6 & 8 mm +0.03 (+.0010) 0 (-.0000) 16 mm +0.04 (+.0015) +0.01 (+.0005)  
 10 mm +0.04 (+.0013) -0.01 (-.0003) 20 mm +0.03 (+.0011) 0 (+.0001)  
 12 mm +0.05 (+.0017) +0.01 (+.0006)

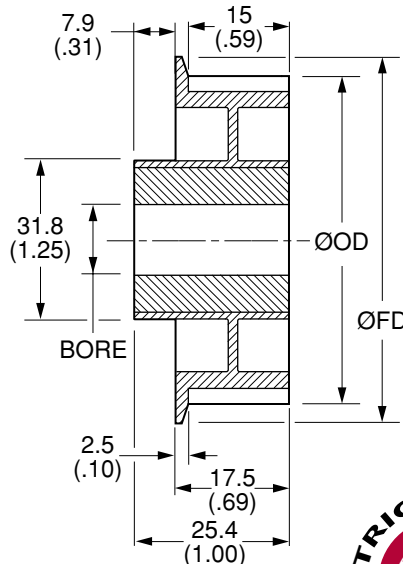
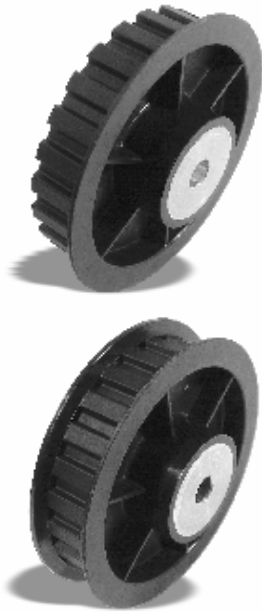
Larger number of teeth on the next page



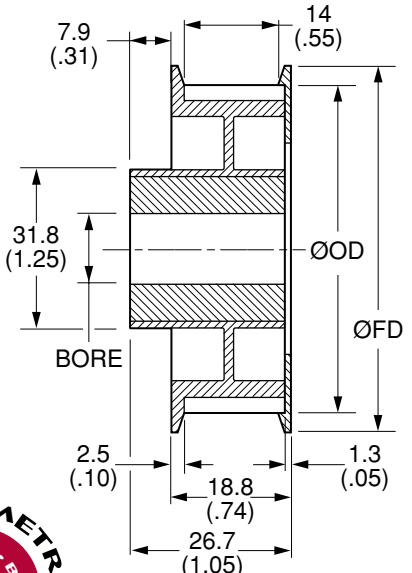


# L Timing Belt Pulleys

**INCH Pitch 3/8" (9.53 mm)  
FOR BELTS UP TO 1/2" OR 12.7 mm WIDE**



**Fig. 1  
SINGLE FLANGE**



**Fig. 2  
DOUBLE FLANGE**

**MATERIAL:**  
Pulley - Nylon – Black, Fiberglass Reinforced  
Insert - Aluminum

These bore sizes available on special request

NOTE: Dimensions in ( ) are in inches.

Catalog Number	No. of Teeth	Fig. No.	Bore	P.D.	ØOD ± 0.13 (± .005)	Flange Dia. ØFD
QPMLN50028S06	28	1	6 (.236)	84.89 (3.342)	84.12 (3.312)	90.2 (3.55)
QPMLN50028F06		2	6 (.236)			
QPMLN50028S08		1	8 (.315)			
QPMLN50028S10		1	10 (.394)			
QPMLN50028S12		1	12 (.472)			
QPMLN50028S16		1	16 (.630)			
QPMLN50028S20		1	20 (.787)			
QPMLN50028F20		2	20 (.787)			
QPMLN50030S06	30	1	6 (.236)	90.96 (3.581)	90.2 (3.551)	96 (3.78)
QPMLN50030F06		2	6 (.236)			
QPMLN50030S08		1	8 (.315)			
QPMLN50030S10		1	10 (.394)			
QPMLN50030S12		1	12 (.472)			
QPMLN50030S16		1	16 (.630)			
QPMLN50030S20		1	20 (.787)			
QPMLN50030F20		2	20 (.787)			

**Bore Tolerance:** 6 & 8 mm +0.03 (+.0010) 16 mm +0.04 (+.0015)  
0 (-.0000) +0.01 (+.0005)  
10 mm +0.04 (+.0013) 20 mm +0.03 (+.0011)  
-0.01 (-.0003) 0 (+.0001)  
12 mm +0.05 (+.0017)  
+0.01 (+.0006)

Larger number of teeth  
on the next page





# L Timing Belt Pulleys

INCH Pitch 3/8" (9.53 mm)  
FOR BELTS UP TO 1/2" OR 12.7 mm WIDE

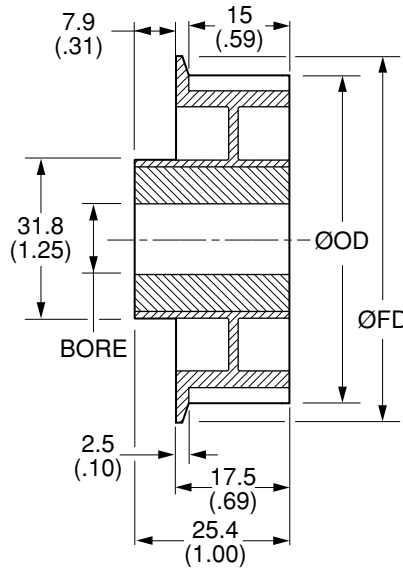
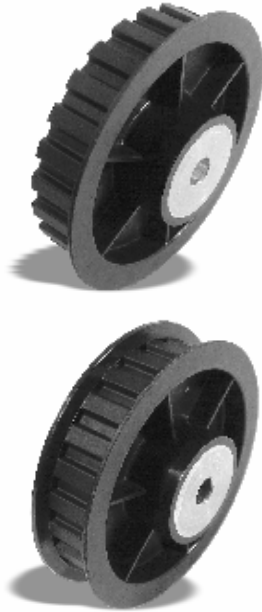


Fig. 1  
SINGLE FLANGE

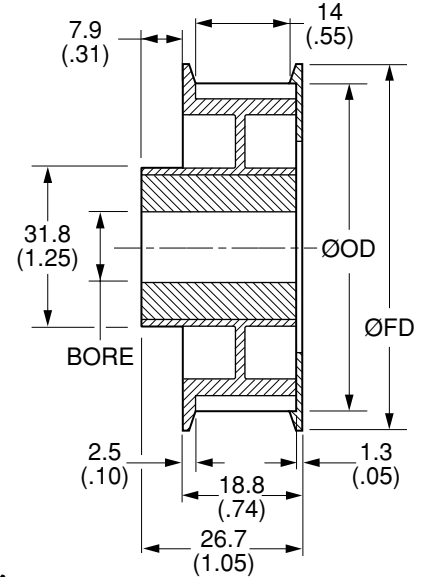


Fig. 2  
DOUBLE FLANGE



**MATERIAL:**  
Pulley - Nylon – Black, Fiberglass Reinforced  
Insert - Aluminum

These bore sizes available on special request

NOTE: Dimensions in ( ) are in inches.

Catalog Number	No. of Teeth	Fig. No.	Bore	P.D.	ØOD ± 0.13 (± .005)	Flange Dia. ØFD
QPMLN50032S06	32	1	6 (.236)	97.03 (3.820)	96.27 (3.790)	102.9 (4.05)
QPMLN50032F06		2	6 (.236)			
QPMLN50032S08		1	8 (.315)			
QPMLN50032S10		1	10 (.394)			
QPMLN50032S12		1	12 (.472)			
QPMLN50032S16		1	16 (.630)			
QPMLN50032S20		1	20 (.787)			
QPMLN50032F20		2	20 (.787)			

**Bore Tolerance:** 6 & 8 mm +0.03 (+.0010) 0 (-.0000) 16 mm +0.04 (+.0015) +0.01 (+.0005)  
10 mm +0.04 (+.0013) -0.01 (-.0003) 20 mm +0.03 (+.0011) 0 (+.0001)  
12 mm +0.05 (+.0017) +0.01 (+.0006)

