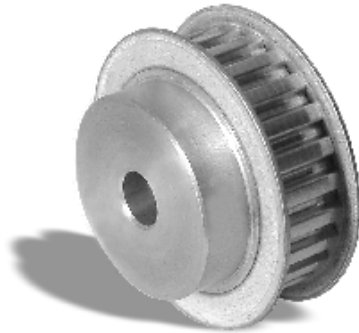




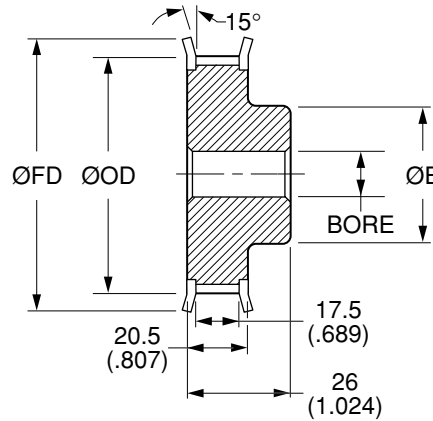
Quality
Transmission
Components

HTD5 Timing Belt Pulleys

**METRIC Pitch 5 mm HTD (.1969")
FOR BELTS UP TO 15 mm OR .591" WIDE**



MATERIAL: 2024-T4 or 2024-T351
Aluminum Alloy
FINISH: Clear Anodize



NOTE: Dimensions in () are in inches.

Catalog Number	No. of Teeth	Bore F8	Pitch Diameter	Outside Diameter ØOD	Hub Diameter ØE	Flange Diameter ØFD
QPMHTD5A15012F06	12	6 (.2362)	19.1 (.752)	17.96 (.707)	12 (.472)	23 (.906)
QPMHTD5A15013F06	13		20.69 (.815)	19.55 (.770)	13 (.512)	25 (.984)
QPMHTD5A15014F06	14		22.28 (.877)	21.14 (.832)	13 (.512)	25 (.984)
QPMHTD5A15015F06	15		23.87 (.940)	22.73 (.895)	16 (.630)	28 (1.102)
QPMHTD5A15016F06	16		25.46 (1.003)	24.32 (.958)	16 (.630)	28 (1.102)
QPMHTD5A15017F06	17		27.06 (1.065)	25.91 (1.020)	18 (.709)	32 (1.260)
QPMHTD5A15018F06	18		28.65 (1.128)	27.5 (1.083)	19 (.748)	32 (1.260)
QPMHTD5A15019F06	19		30.24 (1.191)	29.1 (1.146)	20 (.787)	

Bore Tolerance (F8): 6 mm +0.028 (+.0011)
+0.010 (+.0004)

Larger number of teeth on the next page

O.D. Tolerance: 12 to 16 teeth +0.05 (+.002)
0 (-.000)
17 to 19 teeth +0.08 (+.003)
0 (-.000)

www.econobelt.com



Quality Transmission Components

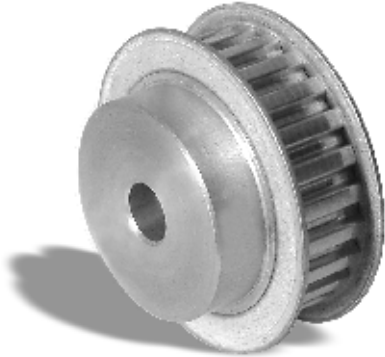
125 Railroad Avenue, Garden City Park, NY 11040-5016
Phone: (516) 437-6700 • Fax: (516) 328-3343
e-mail: support@econobelt.com



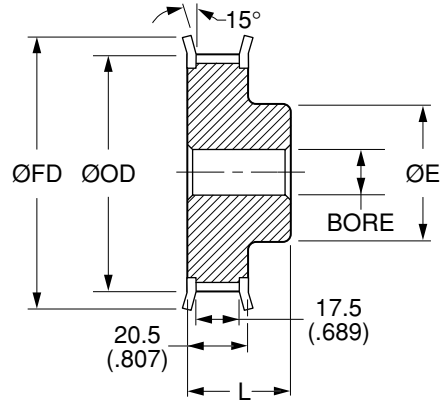
Quality
Transmission
Components

HTD5 Timing Belt Pulleys

**METRIC Pitch 5 mm HTD (.1969")
FOR BELTS UP TO 15 mm OR .591" WIDE**



MATERIAL: 2024-T4 or 2024-T351
Aluminum Alloy
FINISH: Clear Anodize



NOTE: Dimensions in () are in inches.

Catalog Number	No. of Teeth	Bore F8	Pitch Diameter	Outside Diameter ØOD	Overall Length L	Hub Diameter ØE	Flange Diameter ØFD	
QPMHTD5A15020F06	20	6 (.2362)	31.83 (1.253)	30.69 (1.208)	26 (1.024)	23 (.906)	36 (1.417)	
QPMHTD5A15021F06	21		33.42 (1.316)	32.28 (1.271)		24 (.945)	38 (1.496)	
QPMHTD5A15022F06	22		35.01 (1.379)	33.87 (1.334)	26 (1.024)	26 (1.024)	39 (1.535)	
QPMHTD5A15024F06	24		38.2 (1.504)	37.05 (1.459)	28 (1.102)	27 (1.063)	42 (1.654)	
QPMHTD5A15025F06	25		39.79 (1.566)	38.65 (1.521)	28 (1.102)	30 (1.181)	44 (1.732)	
QPMHTD5A15026F06	26		41.38 (1.629)	40.24 (1.584)	28 (1.102)	31 (1.201)	48 (1.890)	
QPMHTD5A15028F06	28	44.56 (1.754)	43.42 (1.709)	35 (1.378)				51 (2.008)
QPMHTD5A15030F06	30	47.75 (1.880)	46.6 (1.835)	28 (1.102)				38 (1.496)
QPMHTD5A15032F08	32	50.93 (2.005)	49.79 (1.960)					
QPMHTD5A15034F08	34	54.11 (2.130)	52.97 (2.085)					
QPMHTD5A15035F08	35	55.7 (2.193)	54.56 (2.148)					
QPMHTD5A15036F08	36	57.3 (2.256)	56.15 (2.211)					
QPMHTD5A15038F08	38	8 (.3150)	60.48 (2.381)	59.34 (2.336)	28 (1.102)	38 (1.496)	70 (2.756)	
QPMHTD5A15040F08	40		63.66 (2.506)	62.52 (2.461)				

Bore Tolerance (F8): 6 mm +0.028 (+.0011)
+0.010 (+.0004)
8 mm +0.035 (+.0014)
+0.013 (+.0005)

Larger number of teeth on the next page

O.D. Tolerance: 20 to 32 teeth +0.08 (+.003)
0 (-.000)
34 to 40 teeth +0.10 (+.004)
0 (-.000)

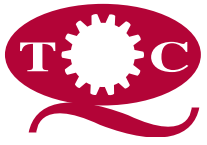
HTD5 TIMING BELT PULLEYS

www.econobelt.com



Quality Transmission Components

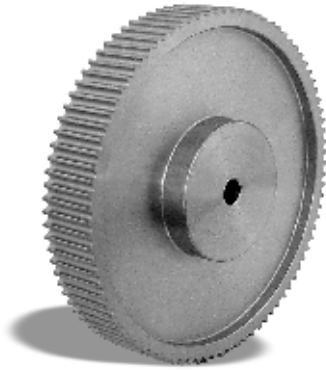
125 Railroad Avenue, Garden City Park, NY 11040-5016
Phone: (516) 437-6700 • Fax: (516) 328-3343
e-mail: support@econobelt.com



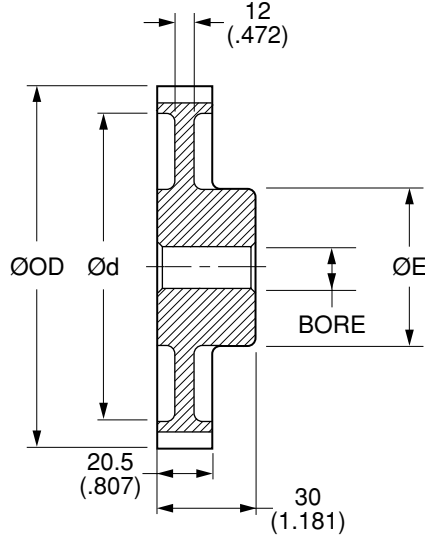
Quality
Transmission
Components

HTD5 Timing Belt Pulleys

**METRIC Pitch 5 mm HTD (.1969")
FOR BELTS UP TO 15 mm OR .591" WIDE**



MATERIAL: 2024-T4 or 2024-T351
Aluminum Alloy
FINISH: Clear Anodize



NOTE: Dimensions in () are in inches.

Catalog Number	No. of Teeth	Bore F8	Pitch Diameter	Outside Diameter $\varnothing OD$	Hub Diameter $\varnothing E$	$\varnothing d$
QPMHTD5A15044N08	44	8 (.3150)	70.03 (2.757)	68.89 (2.712)	38 (1.496)	60 (2.362)
QPMHTD5A15048N08	48		76.39 (3.008)	75.25 (2.963)	38 (1.496)	65 (2.559)
QPMHTD5A15050N08	50		79.58 (3.133)	78.43 (3.088)	38 (1.496)	70 (2.756)
QPMHTD5A15056N08	56		89.13 (3.509)	87.98 (3.464)	38 (1.496)	80 (3.150)
QPMHTD5A15060N08	60		95.49 (3.760)	94.35 (3.715)	50 (1.969)	85 (3.346)
QPMHTD5A15062N08	62		98.68 (3.885)	97.53 (3.840)	50 (1.969)	90 (3.543)
QPMHTD5A15072N08	72		114.59 (4.511)	113.45 (4.466)	50 (1.969)	105 (4.134)

Bore Tolerance (F8): 8 mm $+0.035$ $\left(\begin{matrix} +.0014 \\ +.0005 \end{matrix} \right)$

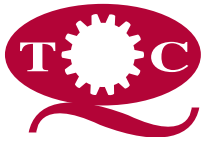
O.D. Tolerance: 44 to 62 teeth $+0.10$ $\left(\begin{matrix} +.004 \\ 0 \\ -.000 \end{matrix} \right)$
72 teeth $+0.13$ $\left(\begin{matrix} +.005 \\ 0 \\ -.000 \end{matrix} \right)$

www.econobelt.com



Quality Transmission Components

125 Railroad Avenue, Garden City Park, NY 11040-5016
Phone: (516) 437-6700 • Fax: (516) 328-3343
e-mail: support@econobelt.com



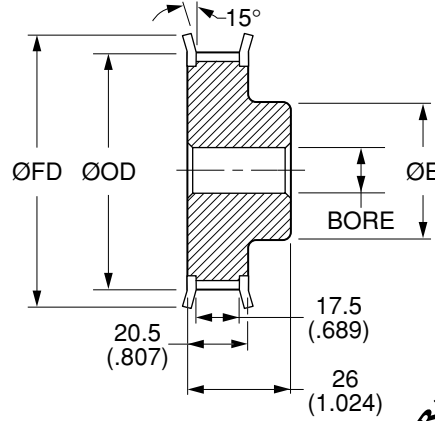
Quality
Transmission
Components

HTD5 Timing Belt Pulleys

**METRIC Pitch 5 mm HTD (.1969")
FOR BELTS UP TO 15 mm OR .591" WIDE**



MATERIAL: AISI 1045 Steel
FINISH: Black Oxide



NOTE: Dimensions in () are in inches.

Catalog Number	No. of Teeth	Bore F8	Pitch Diameter	Outside Diameter ØOD	Hub Diameter ØE	Flange Diameter ØFD
QPMHTD5S15012F06	12	6 (.2362)	19.1 (.752)	17.96 (.707)	12 (.472)	23 (.906)
QPMHTD5S15013F06	13		20.69 (.815)	19.55 (.770)	13 (.512)	25 (.984)
QPMHTD5S15014F06	14		22.28 (.877)	21.14 (.832)	13 (.512)	25 (.984)
QPMHTD5S15015F06	15		23.87 (.940)	22.73 (.895)	16 (.630)	28 (1.102)
QPMHTD5S15016F06	16		25.46 (1.003)	24.32 (.958)	16 (.630)	28 (1.102)
QPMHTD5S15017F06	17		27.06 (1.065)	25.91 (1.020)	18 (.709)	32 (1.260)
QPMHTD5S15018F06	18		28.65 (1.128)	27.5 (1.083)	19 (.748)	32 (1.260)
QPMHTD5S15019F06	19		30.24 (1.191)	29.1 (1.146)	20 (.787)	

Bore Tolerance (F8): 6 mm +0.028 (+.0011)
+0.010 (+.0004)

Larger number of teeth on the next page

O.D. Tolerance: 12 to 16 teeth +0.05 (+.002)
0 (-.000)
17 to 19 teeth +0.08 (+.003)
0 (-.000)

HTD5 TIMING BELT PULLEYS

www.econobelt.com



Quality Transmission Components

125 Railroad Avenue, Garden City Park, NY 11040-5016
Phone: (516) 437-6700 • Fax: (516) 328-3343
e-mail: support@econobelt.com



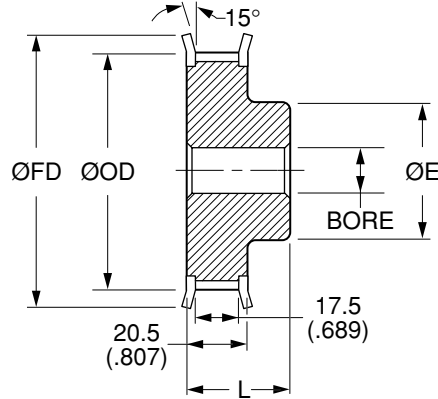
Quality
Transmission
Components

HTD5 Timing Belt Pulleys

**METRIC Pitch 5 mm HTD (.1969")
FOR BELTS UP TO 15 mm OR .591" WIDE**



MATERIAL: AISI 1045 Steel
FINISH: Black Oxide



NOTE: Dimensions in () are in inches.

Catalog Number	No. of Teeth	Bore F8	Pitch Diameter	Outside Diameter ØOD	Overall Length L	Hub Diameter ØE	Flange Diameter ØFD
QPMHTD5S15020F06	20	6 (.2362)	31.83 (1.253)	30.69 (1.208)	26 (1.024)	23 (.906)	36 (1.417)
QPMHTD5S15021F06	21		33.42 (1.316)	32.28 (1.271)		24 (.945)	38 (1.496)
QPMHTD5S15022F06	22		35.01 (1.379)	33.87 (1.334)	26 (1.024)	26 (1.024)	39 (1.535)
QPMHTD5S15024F06	24		38.2 (1.504)	37.05 (1.459)	28 (1.102)		42 (1.654)
QPMHTD5S15025F06	25		39.79 (1.566)	38.65 (1.521)	28 (1.102)	30 (1.181)	44 (1.732)
QPMHTD5S15026F06	26		41.38 (1.629)	40.24 (1.584)			
QPMHTD5S15028F06	28	8 (.3150)	44.56 (1.754)	43.42 (1.709)	28 (1.102)	31 (1.201)	48 (1.890)
QPMHTD5S15030F06	30		47.75 (1.880)	46.6 (1.835)		35 (1.378)	51 (2.008)
QPMHTD5S15032F08	32		50.93 (2.005)	49.79 (1.960)	28 (1.102)	38 (1.496)	54 (2.126)
QPMHTD5S15034F08	34		54.11 (2.130)	52.97 (2.085)			
QPMHTD5S15035F08	35	8 (.3150)	55.7 (2.193)	54.56 (2.148)	28 (1.102)	38 (1.496)	57 (2.244)
QPMHTD5S15036F08	36		57.3 (2.256)	56.15 (2.211)			60 (2.362)
QPMHTD5S15038F08	38		60.48 (2.381)	59.34 (2.336)	28 (1.102)	38 (1.496)	70 (2.756)
QPMHTD5S15040F08	40		63.66 (2.506)	62.52 (2.461)			

Bore Tolerance (F8): 6 mm $+0.028 \begin{pmatrix} +.0011 \\ +0.010 \end{pmatrix} \begin{pmatrix} +.0004 \\ +.0005 \end{pmatrix}$
8 mm $+0.035 \begin{pmatrix} +.0014 \\ +0.013 \end{pmatrix} \begin{pmatrix} +.0005 \\ +.0005 \end{pmatrix}$

Larger number of teeth on the next page

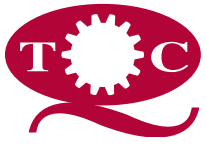
O.D. Tolerance: 20 to 32 teeth $+0.08 \begin{pmatrix} +.003 \\ 0 \end{pmatrix} \begin{pmatrix} -.000 \\ -.000 \end{pmatrix}$
34 to 40 teeth $+0.10 \begin{pmatrix} +.004 \\ 0 \end{pmatrix} \begin{pmatrix} +.004 \\ -.000 \end{pmatrix}$

www.econobelt.com



Quality Transmission Components

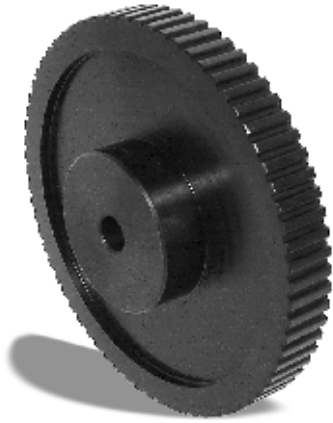
125 Railroad Avenue, Garden City Park, NY 11040-5016
Phone: (516) 437-6700 • Fax: (516) 328-3343
e-mail: support@econobelt.com



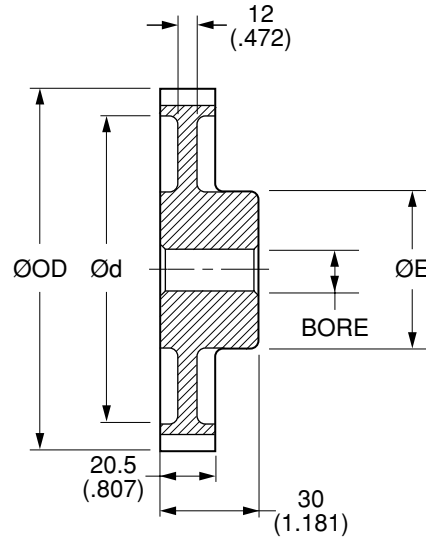
Quality
Transmission
Components

HTD5 Timing Belt Pulleys

**METRIC Pitch 5 mm HTD (.1969")
FOR BELTS UP TO 15 mm OR .591" WIDE**



MATERIAL: AISI 1045 Steel
FINISH: Black Oxide



NOTE: Dimensions in () are in inches.

Catalog Number	No. of Teeth	Bore F8	Pitch Diameter	Outside Diameter ØOD	Hub Diameter ØE	Ød
QPMHTD5S15044N08	44	8 (.3150)	70.03 (2.757)	68.89 (2.712)	38 (1.496)	60 (2.362)
QPMHTD5S15048N08	48		76.39 (3.008)	75.25 (2.963)	38 (1.496)	65 (2.559)
QPMHTD5S15050N08	50		79.58 (3.133)	78.43 (3.088)	38 (1.496)	70 (2.756)
QPMHTD5S15056N08	56		89.13 (3.509)	87.98 (3.464)	38 (1.496)	80 (3.150)
QPMHTD5S15060N08	60		95.49 (3.760)	94.35 (3.715)	50 (1.969)	85 (3.346)
QPMHTD5S15062N08	62		98.68 (3.885)	97.53 (3.840)	50 (1.969)	90 (3.543)
QPMHTD5S15072N08	72		114.59 (4.511)	113.45 (4.466)		105 (4.134)

Bore Tolerance (F8): 8 mm $+0.035 \begin{pmatrix} +.0014 \\ +0.013 \end{pmatrix} \begin{pmatrix} +.0014 \\ +.0005 \end{pmatrix}$

O.D. Tolerance: 44 to 62 teeth $+0.10 \begin{pmatrix} +.004 \\ 0 \end{pmatrix} \begin{pmatrix} +.004 \\ -.000 \end{pmatrix}$
72 teeth $+0.13 \begin{pmatrix} +.005 \\ 0 \end{pmatrix} \begin{pmatrix} +.005 \\ -.000 \end{pmatrix}$

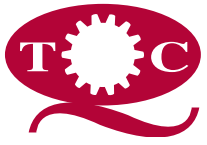
HTD5 TIMING BELT PULLEYS

www.econobelt.com



Quality Transmission Components

125 Railroad Avenue, Garden City Park, NY 11040-5016
Phone: (516) 437-6700 • Fax: (516) 328-3343
e-mail: support@econobelt.com



Quality
Transmission
Components

HTD5 Timing Belt Pulleys

**METRIC Pitch 5 mm HTD (.1969")
FOR BELTS UP TO 15 mm OR .591" WIDE**

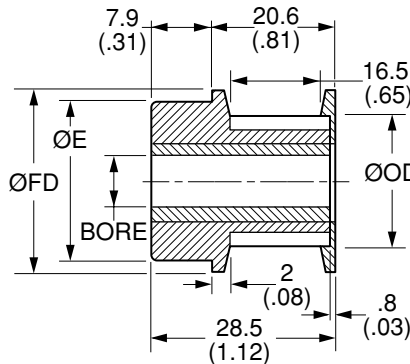
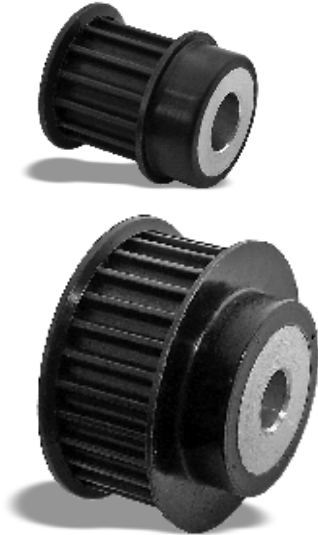


Fig. 1

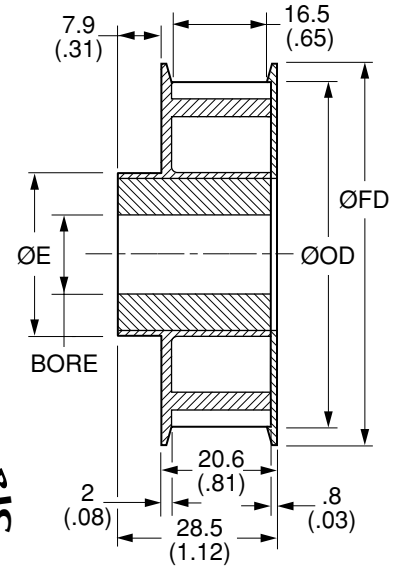


Fig. 2

MATERIAL:

Pulley - Nylon – Black, Fiberglass Reinforced
Insert - Aluminum

NOTE: Dimensions in () are in inches.

Catalog Number	No. of Teeth	Fig. No.	Bore	P.D.	ØOD ±0.13 (±.005)	Hub Diameter ØE	Flange Diameter ØFD
QPMHTD5N15012F06	12	1	6 (.236)	19.1 (.752)	17.96 (.707)	19.1 (.75)	22.1 (.87)
QPMHTD5N15014F06	14		6 (.236)	22.28 (.877)	21.13 (.832)	19.1 (.75)	25.4 (1.00)
QPMHTD5N15015F06	15		6 (.236)	23.88 (.940)	22.73 (.895)	22.1 (.87)	26.9 (1.06)
QPMHTD5N15015F08			8 (.315)				
QPMHTD5N15016F06	16		6 (.236)	25.48 (1.003)	24.33 (.958)	22.1 (.87)	27.7 (1.09)
QPMHTD5N15016F08			8 (.315)				
QPMHTD5N15018F06	18		6 (.236)	28.65 (1.128)	27.51 (1.083)	31.8 (1.25)	31.8 (1.25)
QPMHTD5N15018F08			8 (.315)				
QPMHTD5N15019F06	19		6 (.236)	30.25 (1.191)	29.11 (1.146)	31.8 (1.25)	33.5 (1.32)
QPMHTD5N15019F08			8 (.315)				
QPMHTD5N15020F06	20		6 (.236)	31.83 (1.253)	30.68 (1.208)	31.8 (1.25)	34.8 (1.37)
QPMHTD5N15020F08			8 (.315)				
QPMHTD5N15022F06	22		6 (.236)	35.03 (1.379)	33.88 (1.334)	31.8 (1.25)	38.1 (1.50)
QPMHTD5N15022F08			8 (.315)				
QPMHTD5N15024F06	24	6 (.236)	38.2 (1.504)	37.06 (1.459)	31.8 (1.25)	40.9 (1.61)	
QPMHTD5N15024F08		8 (.315)					
QPMHTD5N15028F06	28	6 (.236)	44.55 (1.754)	43.41 (1.709)	31.8 (1.25)	47.5 (1.87)	
QPMHTD5N15028F08		8 (.315)					
QPMHTD5N15030F06	30	6 (.236)	47.75 (1.880)	46.61 (1.835)	31.8 (1.25)	50.8 (2.00)	
QPMHTD5N15030F08		8 (.315)					

Bore Tolerance: 6 & 8 mm +0.03 (+.0010)
0 (-.0000)

Larger number of teeth on the next page

Other bore sizes available on special request. See page 1-144 thru 1-146

www.econobelt.com



Quality Transmission Components

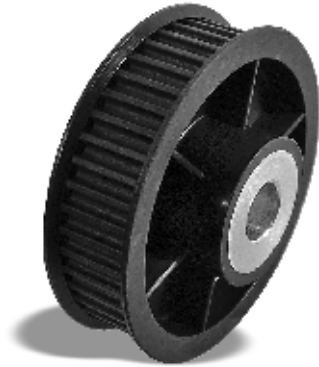
125 Railroad Avenue, Garden City Park, NY 11040-5016
Phone: (516) 437-6700 • Fax: (516) 328-3343
e-mail: support@econobelt.com



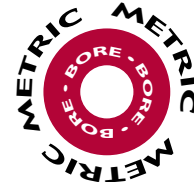
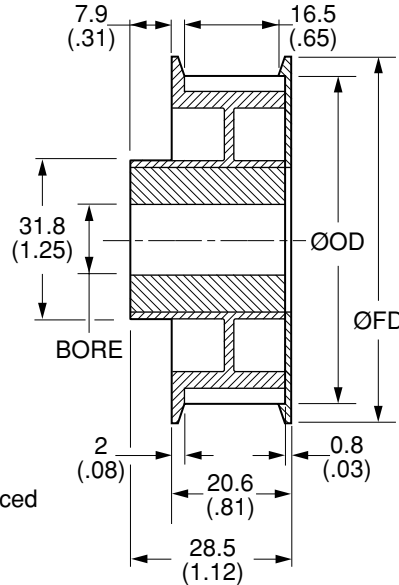
Quality
Transmission
Components

HTD5 Timing Belt Pulleys

**METRIC Pitch 5 mm HTD (.1969")
FOR BELTS UP TO 15 mm OR .591" WIDE**



MATERIAL:
Pulley - Nylon – Black, Fiberglass Reinforced
Insert - Aluminum



NOTE: Dimensions in () are in inches.

Catalog Number	No. of Teeth	Bore	P.D.	ØOD ±0.13 (±.005)	Flange Diameter ØFD
QPMHTD5N15032F08	32	8 (.315)	50.93 (2.005)	49.78 (1.960)	53.9 (2.12)
QPMHTD5N15032F10		10 (.394)			
QPMHTD5N15036F08	36	8 (.315)	57.30 (2.256)	56.16 (2.211)	61.2 (2.41)
QPMHTD5N15036F10		10 (.394)			
QPMHTD5N15036F12	12 (.472)				
QPMHTD5N15038F08	38	8 (.315)	60.48 (2.381)	59.33 (2.336)	64.5 (2.54)
QPMHTD5N15038F10		10 (.394)			
QPMHTD5N15040F08	40	8 (.315)	63.65 (2.506)	62.51 (2.461)	68.8 (2.71)
QPMHTD5N15040F10		10 (.394)			
QPMHTD5N15040F12	12 (.472)				
QPMHTD5N15042F08	42	8 (.315)	66.85 (2.632)	65.71 (2.587)	70.9 (2.79)
QPMHTD5N15042F10		10 (.394)			
QPMHTD5N15044F08	44	8 (.315)	70.03 (2.757)	68.89 (2.712)	73.9 (2.91)
QPMHTD5N15044F10		10 (.394)			
QPMHTD5N15048F08	48	8 (.315)	76.4 (3.008)	75.26 (2.963)	79.5 (3.13)
QPMHTD5N15048F10		10 (.394)			
QPMHTD5N15048F12	12 (.472)				
QPMHTD5N15050F08	50	8 (.315)	79.58 (3.133)	78.44 (3.088)	82.8 (3.26)
QPMHTD5N15050F10		10 (.394)			
QPMHTD5N15050F12	12 (.472)				

Bore Tolerance: 8 mm +0.03 (+.0010)
0 (-.0000)
10 mm +0.04 (+.0013)
-0.01 (-.0003)
12 mm +0.05 (+.0017)
+0.01 (+.0006)

Larger number of teeth on the next page

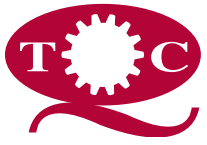
Other bore sizes available on special request. See page 1-147, 148

www.econobelt.com



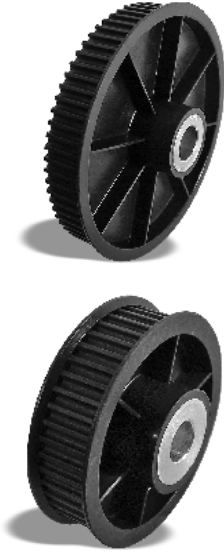
Quality Transmission Components

125 Railroad Avenue, Garden City Park, NY 11040-5016
Phone: (516) 437-6700 • Fax: (516) 328-3343
e-mail: support@econobelt.com

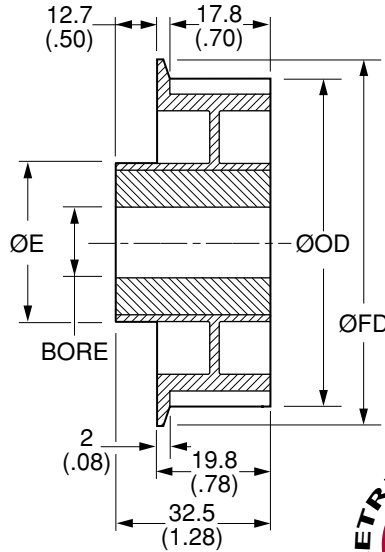


HTD5 Timing Belt Pulleys

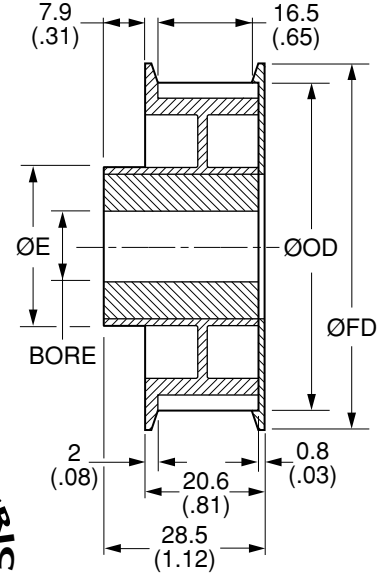
**METRIC Pitch 5 mm HTD (.1969")
FOR BELTS UP TO 15 mm OR .591" WIDE**



MATERIAL:
Pulley - Nylon – Black, Fiberglass Reinforced
Insert - Aluminum



**Fig. 1
SINGLE FLANGE**



**Fig. 2
DOUBLE FLANGE**

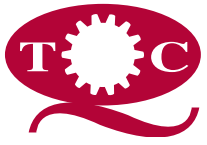
NOTE: Dimensions in () are in inches.

Catalog Number	No. of Teeth	Fig. No.	Bore	P.D.	ØOD ±0.13 (±.005)	Hub Diameter ØE	Flange Diameter ØFD
QPMHTD5N15056F08	56	2	8 (.315)	89.13 (3.509)	87.99 (3.464)	31.8 (1.25)	92.2 (3.63)
QPMHTD5N15056F10			10 (.394)				
QPMHTD5N15056F12			12 (.472)				
QPMHTD5N15060F08	60	2	8 (.315)	95.5 (3.760)	94.36 (3.715)	31.8 (1.25)	98.8 (3.89)
QPMHTD5N15060F10			10 (.394)				
QPMHTD5N15060F12			12 (.472)				
QPMHTD5N15062F08	62	2	8 (.315)	98.68 (3.885)	97.54 (3.840)	31.8 (1.25)	104.1 (4.10)
QPMHTD5N15062F10			10 (.394)				
QPMHTD5N15064F08	64	2	8 (.315)	101.85 (4.010)	100.71 (3.965)	31.8 (1.25)	104.9 (4.13)
QPMHTD5N15064F10			10 (.394)				
QPMHTD5N15064F12			12 (.472)				
QPMHTD5N15072S10	72	1	10 (.394)	114.58 (4.511)	113.44 (4.466)	31.8 (1.25)	118.6 (4.67)
QPMHTD5N15080S10	80	1	10 (.394)	127.79 (5.031)	126.19 (4.968)	46 (1.81)	131.8 (5.19)
QPMHTD5N15090S12	90	1	12 (.472)	143.23 (5.639)	142.09 (5.594)	50.8 (1.25)	147.6 (5.81)

Bore Tolerance: 8 mm +0.03 (+.0010)
0 (-.0000)
10 mm +0.04 (+.0013)
-0.01 (-.0003)
12 mm +0.05 (+.0017)
+0.01 (+.0006)

Other bore sizes available on special request. See page 1-148 thru 1-150





Quality
Transmission
Components

HTD5 Timing Belt Pulleys

**METRIC Pitch 5 mm HTD (.1969")
FOR BELTS UP TO 15 mm OR .591" WIDE**

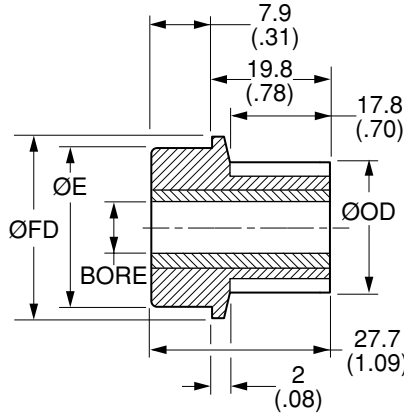


Fig. 1
SINGLE FLANGE

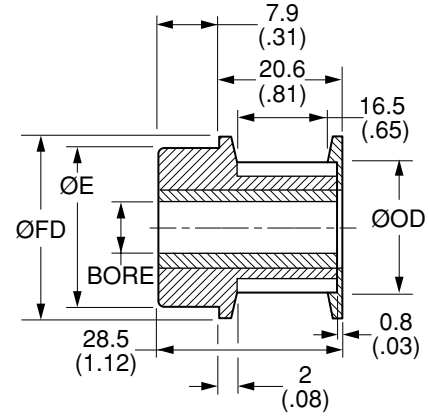


Fig. 2
DOUBLE FLANGE

MATERIAL:

Pulley - Nylon – Black, Fiberglass Reinforced

Insert - Aluminum



These bore sizes available on special request

NOTE: Dimensions in () are in inches.

Catalog Number	No. of Teeth	Fig. No.	Bore	P.D.	ØOD ±0.13 (±.005)	Hub Dia. ØE	Flange Dia. ØFD			
QPMHTD5N15012S04	12	1	4 (.157)	19.1	17.96	19.1	22.1			
QPMHTD5N15012S06			6 (.236)	(.752)	(.707)	(.75)	(.87)			
QPMHTD5N15014S04	14	1	4 (.157)	22.28	21.13	19.1	25.4			
QPMHTD5N15014S06			6 (.236)	(.877)	(.832)	(.75)	(1.00)			
QPMHTD5N15015S06	15	1	6 (.236)	23.88	22.73	22.1	26.9			
QPMHTD5N15015S08			8 (.315)	(.940)	(.895)	(.87)	(1.06)			
QPMHTD5N15016S06	16	1	6 (.236)	25.48	24.33	22.1	27.7			
QPMHTD5N15016S08			8 (.315)	(1.003)	(.958)	(.87)	(1.09)			
QPMHTD5N15018S06	18	1	6 (.236)	28.65	27.51	31.8	31.8			
QPMHTD5N15018S08		1	8 (.315)					(1.128)	(1.083)	(1.25)
QPMHTD5N15018S10		1	10 (.394)					10 (.394)	10 (.394)	
QPMHTD5N15018F10		2								
QPMHTD5N15019S06	19	1	6 (.236)	30.25	29.11	31.8	33.5			
QPMHTD5N15019S08			8 (.315)	(1.191)	(1.146)	(1.25)	(1.32)			

Bore Tolerance: 4, 6 & 8 mm +0.03 (+.0010)
0 (-.0000)
10 mm +0.04 (+.0013)
-0.01 (-.0003)

Larger number of teeth on the next page

HTD5 TIMING BELT PULLEYS

www.econobelt.com



Quality Transmission Components

125 Railroad Avenue, Garden City Park, NY 11040-5016

Phone: (516) 437-6700 • Fax: (516) 328-3343

e-mail: support@econobelt.com



Quality
Transmission
Components

HTD5 Timing Belt Pulleys

**METRIC Pitch 5 mm HTD (.1969")
FOR BELTS UP TO 15 mm OR .591" WIDE**

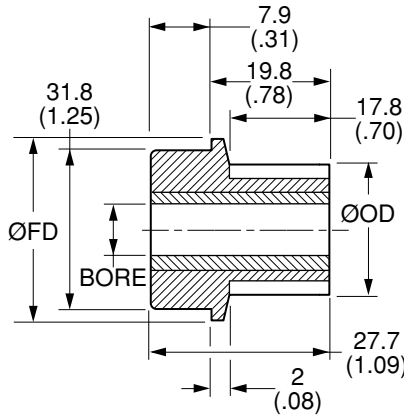


Fig. 1
SINGLE FLANGE

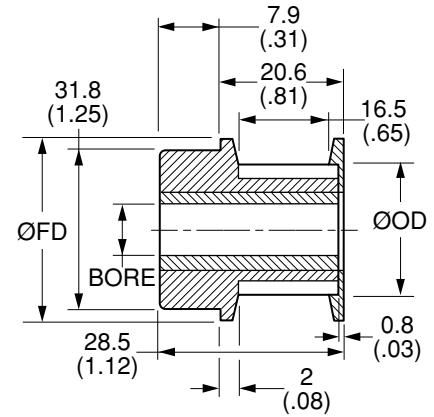


Fig. 2
DOUBLE FLANGE

MATERIAL:

Pulley - Nylon – Black, Fiberglass Reinforced
Insert - Aluminum



These bore sizes available on special request

NOTE: Dimensions in () are in inches.

Catalog Number	No. of Teeth	Fig. No.	Bore	P.D.	ØOD ±0.13 (±.005)	Flange Dia. ØFD
QPMHTD5N15020S06	20	1	6 (.236)	31.83 (1.253)	30.68 (1.208)	34.8 (1.37)
QPMHTD5N15020S08		1	8 (.315)			
QPMHTD5N15020S10		1	10 (.394)			
QPMHTD5N15020F10		2	10 (.394)			
QPMHTD5N15022S06	22	1	6 (.236)	35.03 (1.379)	33.88 (1.334)	38.1 (1.50)
QPMHTD5N15022S08		1	8 (.315)			
QPMHTD5N15022S10		1	10 (.394)			
QPMHTD5N15022F10		2	10 (.394)			
QPMHTD5N15024S06	24	1	6 (.236)	38.2 (1.504)	37.06 (1.459)	40.9 (1.61)
QPMHTD5N15024S08		1	8 (.315)			
QPMHTD5N15024S10		1	10 (.394)			
QPMHTD5N15024F10		2	10 (.394)			

Bore Tolerance: 6 & 8 mm +0.03 (+.0010)
0 (-.0000)
10 mm +0.04 (+.0013)
-0.01 (-.0003)

Larger number of teeth on the next page

www.econobelt.com



Quality Transmission Components

125 Railroad Avenue, Garden City Park, NY 11040-5016
Phone: (516) 437-6700 • Fax: (516) 328-3343
e-mail: support@econobelt.com



Quality
Transmission
Components

HTD5 Timing Belt Pulleys

**METRIC Pitch 5 mm HTD (.1969")
FOR BELTS UP TO 15 mm OR .591" WIDE**

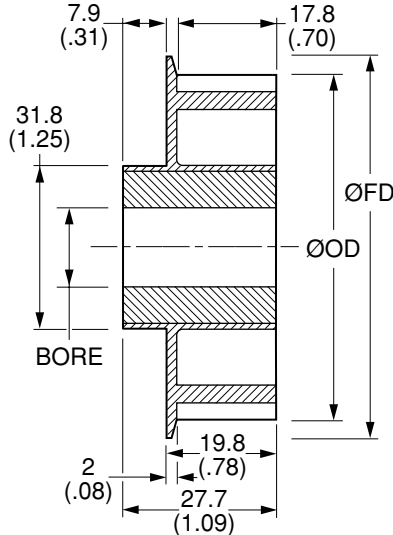
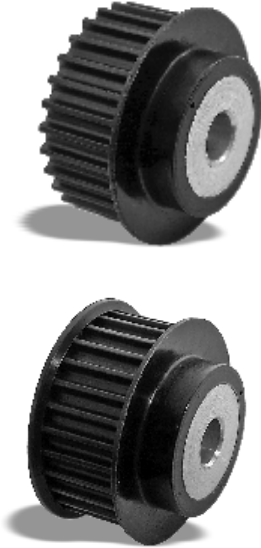


Fig. 1
SINGLE FLANGE

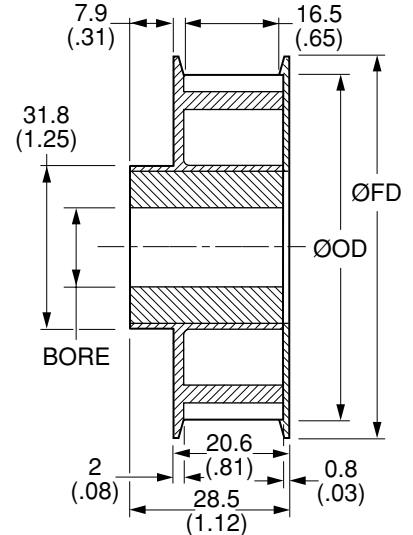
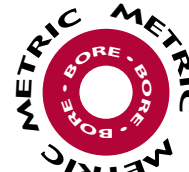


Fig. 2
DOUBLE FLANGE

MATERIAL:
Pulley - Nylon – Black, Fiberglass Reinforced
Insert - Aluminum



These bore sizes available on special request

NOTE: Dimensions in () are in inches.

Catalog Number	No. of Teeth	Fig. No.	Bore	P.D.	ØOD ±0.13 (±.005)	Flange Dia. ØFD
QPMHTD5N15028S06	28	1	6 (.236)	44.55 (1.754)	43.41 (1.709)	47.5 (1.87)
QPMHTD5N15028S08		1	8 (.315)			
QPMHTD5N15028S10		1	10 (.394)			
QPMHTD5N15028F10		2	10 (.394)			
QPMHTD5N15030S06	30	1	6 (.236)	47.75 (1.880)	46.61 (1.835)	50.8 (2.00)
QPMHTD5N15030S08		1	8 (.315)			
QPMHTD5N15030S10		1	10 (.394)			
QPMHTD5N15030F10		2	10 (.394)			

Bore Tolerance: 6 & 8 mm +0.03 (+.0010)
0 (-.0000)
10 mm +0.04 (+.0013)
-0.01 (-.0003)

Larger number of teeth on the next page

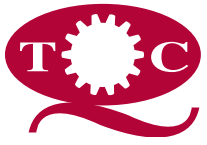
HTD5 TIMING BELT PULLEYS

www.econobelt.com



Quality Transmission Components

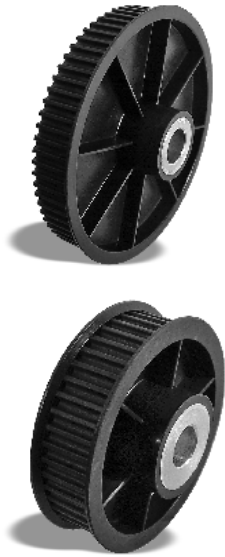
125 Railroad Avenue, Garden City Park, NY 11040-5016
Phone: (516) 437-6700 • Fax: (516) 328-3343
e-mail: support@econobelt.com



Quality
Transmission
Components

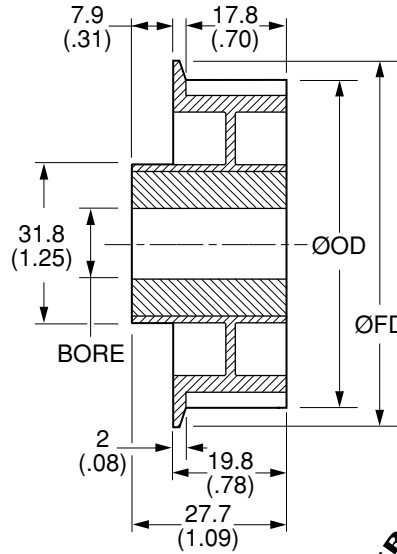
HTD5 Timing Belt Pulleys

**METRIC Pitch 5 mm HTD (.1969")
FOR BELTS UP TO 15 mm OR .591" WIDE**

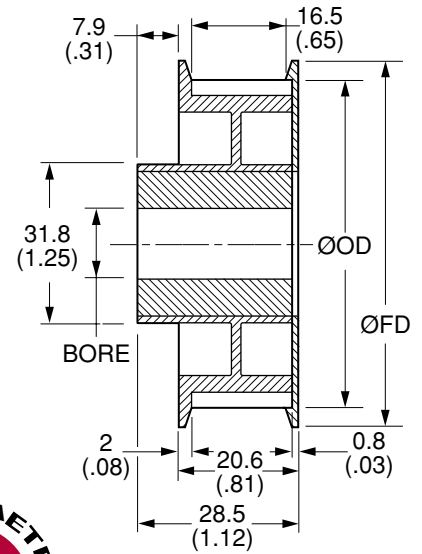


MATERIAL:

Pulley - Nylon – Black, Fiberglass Reinforced
Insert - Aluminum



**Fig. 1
SINGLE FLANGE**



**Fig. 2
DOUBLE FLANGE**



These bore sizes available on special request

NOTE: Dimensions in () are in inches.

Catalog Number	No. of Teeth	Fig. No.	Bore	P.D.	ØOD ±0.13 (±.005)	Flange Dia. ØFD			
QPMHTD5N15032S08	32	1	8 (.315)	50.93	49.78	53.9			
QPMHTD5N15032S10			10 (.394)	(2.005)	(1.960)	(2.12)			
QPMHTD5N15036S08	36	1	8 (.315)	57.3	56.16	61.2			
QPMHTD5N15036S10			10 (.394)	(2.256)	(2.211)	(2.41)			
QPMHTD5N15036S12			12 (.472)						
QPMHTD5N15038S08	38	1	8 (.315)	60.48	59.33	64.5			
QPMHTD5N15038S10		1	10 (.394)				(2.381)	(2.336)	(2.54)
QPMHTD5N15038S12		1	12 (.472)						
QPMHTD5N15038F12		2	12 (.472)						
QPMHTD5N15040S08	40	1	8 (.315)	63.65	62.51	68.8			
QPMHTD5N15040S10			10 (.394)				(2.506)	(2.461)	(2.71)
QPMHTD5N15040S12			12 (.472)						
QPMHTD5N15042S08	42	1	8 (.315)	66.85	65.71	70.9			
QPMHTD5N15042S10		1	10 (.394)				(2.632)	(2.587)	(2.79)
QPMHTD5N15042S12		1	12 (.472)						
QPMHTD5N15042F12		2	12 (.472)						

Bore Tolerance: 8 mm +0.03 (+.0010)
0 (-.0000)
10 mm +0.04 (+.0013)
-0.01 (-.0003)
12 mm +0.05 (+.0017)
+0.01 (+.0006)

Larger number of teeth on the next page

www.econobelt.com



Quality Transmission Components

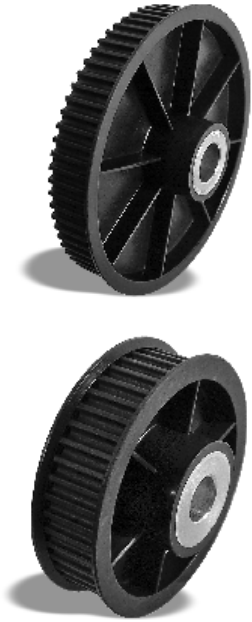
125 Railroad Avenue, Garden City Park, NY 11040-5016
Phone: (516) 437-6700 • Fax: (516) 328-3343
e-mail: support@econobelt.com



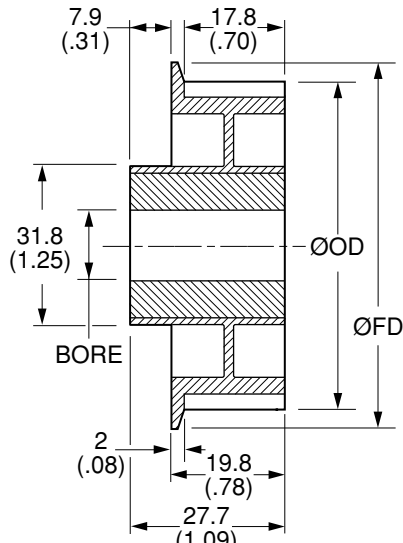
Quality
Transmission
Components

HTD5 Timing Belt Pulleys

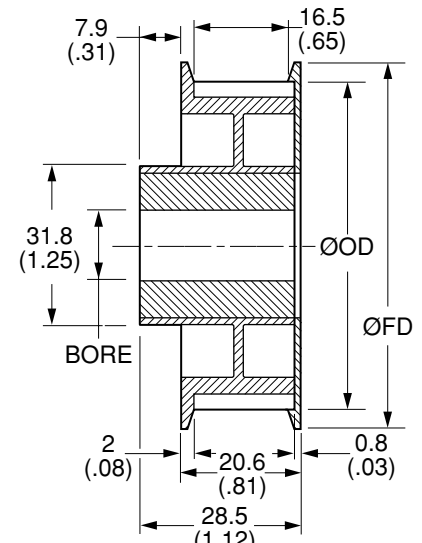
**METRIC Pitch 5 mm HTD (.1969")
FOR BELTS UP TO 15 mm OR .591" WIDE**



MATERIAL:
Pulley - Nylon – Black, Fiberglass Reinforced
Insert - Aluminum



**Fig. 1
SINGLE FLANGE**



**Fig. 2
DOUBLE FLANGE**



These bore sizes available on special request

NOTE: Dimensions in () are in inches.

Catalog Number	No. of Teeth	Fig. No.	Bore	P.D.	ØOD ±0.13 (±.005)	Flange Dia. ØFD
QPMHTD5N15044S08	44	1	8 (.315)	70.03 (2.757)	68.89 (2.712)	73.9 (2.91)
QPMHTD5N15044S10		1	10 (.394)			
QPMHTD5N15044S12		1	12 (.472)			
QPMHTD5N15044F12		2	12 (.472)			
QPMHTD5N15048S08	48	1	8 (.315)	76.4 (3.008)	75.26 (2.963)	79.5 (3.13)
QPMHTD5N15048S10			10 (.394)			
QPMHTD5N15048S12			12 (.472)			
QPMHTD5N15050S08	50	1	8 (.315)	79.58 (3.133)	78.44 (3.088)	82.8 (3.26)
QPMHTD5N15050S10			10 (.394)			
QPMHTD5N15050S12			12 (.472)			
QPMHTD5N15056S08	56	1	8 (.315)	89.13 (3.509)	87.99 (3.464)	92.2 (3.63)
QPMHTD5N15056S10			10 (.394)			
QPMHTD5N15056S12			12 (.472)			
QPMHTD5N15060S08	60	1	8 (.315)	95.5 (3.760)	94.36 (3.715)	98.8 (3.89)
QPMHTD5N15060S10			10 (.394)			
QPMHTD5N15060S12			12 (.472)			

Bore Tolerance: 8 mm +0.03 (+.0010)
0 (-.0000)
10 mm +0.04 (+.0013)
-0.01 (-.0003)
12 mm +0.05 (+.0017)
+0.01 (+.0006)

Larger number of teeth on the next page

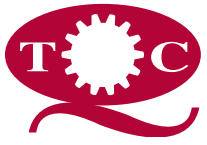
HTD5 TIMING BELT PULLEYS

www.econobelt.com



Quality Transmission Components

125 Railroad Avenue, Garden City Park, NY 11040-5016
Phone: (516) 437-6700 • Fax: (516) 328-3343
e-mail: support@econobelt.com



Quality
Transmission
Components

HTD5 Timing Belt Pulleys

**METRIC Pitch 5 mm HTD (.1969")
FOR BELTS UP TO 15 mm OR .591" WIDE**

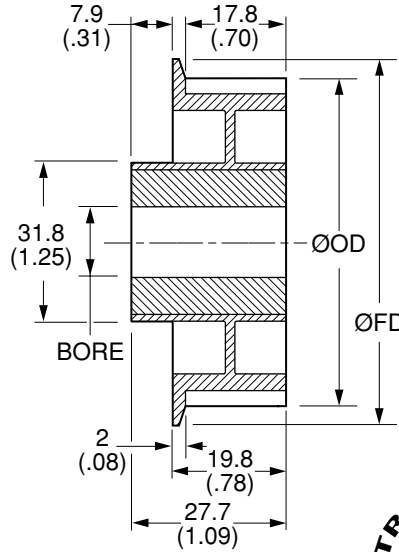
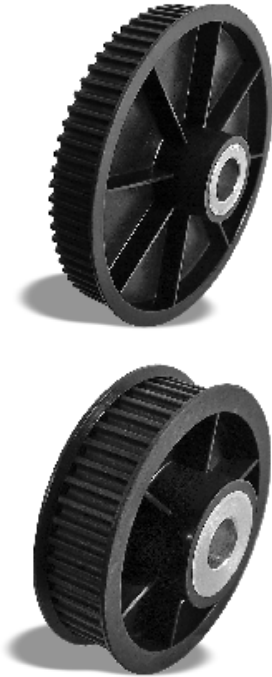


Fig. 1
SINGLE FLANGE

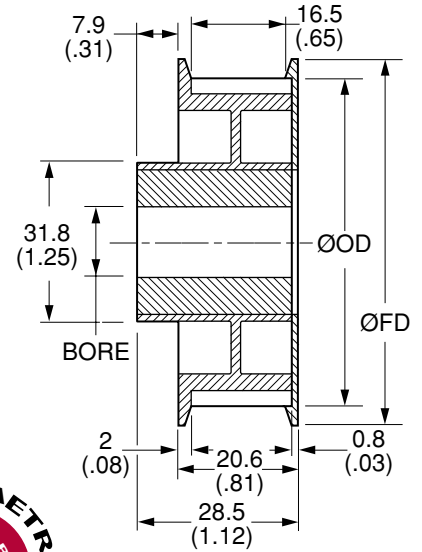


Fig. 2
DOUBLE FLANGE



MATERIAL:
Pulley - Nylon – Black, Fiberglass Reinforced
Insert - Aluminum

These bore sizes available on special request

NOTE: Dimensions in () are in inches.

Catalog Number	No. of Teeth	Fig. No.	Bore	P.D.	ØOD ±0.13 (±.005)	Flange Diameter ØFD
QPMHTD5N15062S08	62	1	8 (.315)	98.68 (3.885)	97.54 (3.840)	104.1 (4.10)
QPMHTD5N15062S10		1	10 (.394)			
QPMHTD5N15062S12		1	12 (.472)			
QPMHTD5N15062F12		2	12 (.472)			
QPMHTD5N15064S08	64	1	8 (.315)	101.85 (4.010)	100.71 (3.965)	104.9 (4.13)
QPMHTD5N15064S10			10 (.394)			
QPMHTD5N15064S12			12 (.472)			

Bore Tolerance: 8 mm +0.03 (+.0010)
0 (-.0000)
10 mm +0.04 (+.0013)
-0.01 (-.0003)
12 mm +0.05 (+.0017)
+0.01 (+.0006)

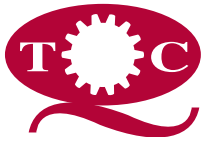
Larger number of teeth on the next page

www.econobelt.com



Quality Transmission Components

125 Railroad Avenue, Garden City Park, NY 11040-5016
Phone: (516) 437-6700 • Fax: (516) 328-3343
e-mail: support@econobelt.com



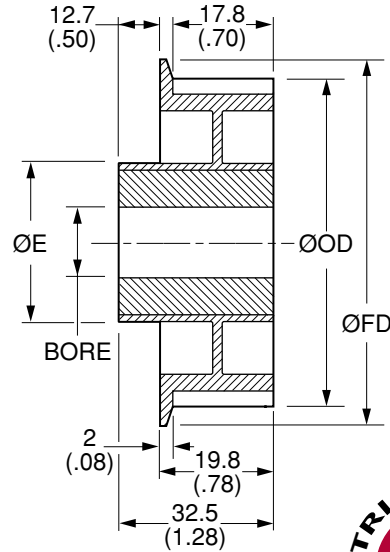
Quality
Transmission
Components

HTD5 Timing Belt Pulleys

**METRIC Pitch 5 mm HTD (.1969")
FOR BELTS UP TO 15 mm OR .591" WIDE**



MATERIAL:
Pulley - Nylon – Black, Fiberglass Reinforced
Insert - Aluminum



These bore sizes available on special request

NOTE: Dimensions in () are in inches.

Catalog Number	No. of Teeth	Bore	P.D.	ØOD ±0.13 (±.005)	Hub Diameter ØE	Flange Diameter ØFD
QPMHTD5N15072S08	72	8 (.315)	114.58 (4.511)	113.44 (4.466)	31.8 (1.25)	118.6 (4.67)
QPMHTD5N15072S12		12 (.472)				
QPMHTD5N15080S12	80	12 (.472)	127.79 (5.031)	126.19 (4.968)	46 (1.81)	131.8 (5.19)
QPMHTD5N15090S16	90	16 (.630)	143.23 (5.639)	142.09 (5.594)	50.8 (2.00)	147.6 (5.81)

Bore Tolerance: 8 mm +0.03 (+.0010)
0 (-.0000)
12 mm +0.05 (+.0017)
+0.01 (+.0006)
16 mm +0.04 (+.0015)
+0.01 (+.0005)

HTD5 TIMING BELT PULLEYS

www.econobelt.com



Quality Transmission Components

125 Railroad Avenue, Garden City Park, NY 11040-5016
Phone: (516) 437-6700 • Fax: (516) 328-3343
e-mail: support@econobelt.com