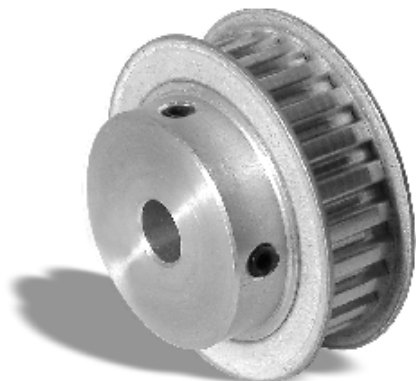


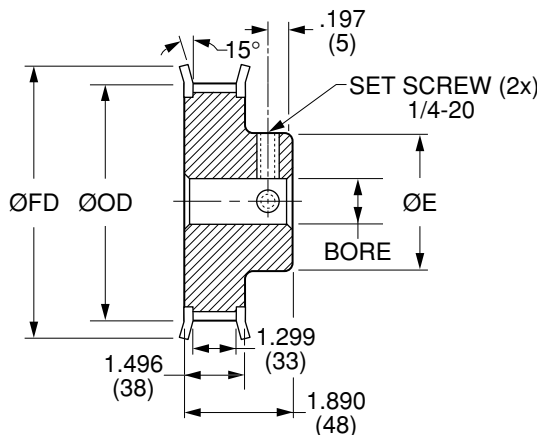
Quality  
Transmission  
Components

# HTD8 Timing Belt Pulleys

**METRIC Pitch 8 mm HTD (.3150")**  
**FOR BELTS UP TO 30 mm OR 1.181" WIDE**



**MATERIAL:** 2024-T4 or 2024-T351  
Aluminum Alloy  
**FINISH:** Clear Anodize



**NOTE:** Dimensions in ( ) are in mm.

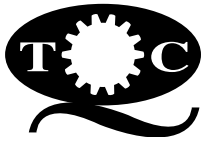
Catalog Number	No. of Teeth	Bore	Pitch Diameter	Outside Diameter ØOD	Hub Diameter ØE	Flange Diameter ØFD
QPEHTD8A30022F16	22	.5000 (12.7)	2.206 (56.02)	2.152 (54.65)	1.693 (43)	2.362 (60)
QPEHTD8A30022F20		.6250 (15.88)				
QPEHTD8A30024F16	24	.5000 (12.7)	2.406 (61.12)	2.352 (59.74)	1.772 (45)	2.598 (66)
QPEHTD8A30024F20		.6250 (15.88)				
QPEHTD8A30026F16	26	.5000 (12.7)	2.607 (66.21)	2.553 (64.84)	1.969 (50)	2.756 (70)
QPEHTD8A30026F20		.6250 (15.88)				
QPEHTD8A30028F16	28	.5000 (12.7)	2.807 (71.3)	2.753 (69.93)	1.969 (50)	2.953 (75)
QPEHTD8A30028F20		.6250 (15.88)				
QPEHTD8A30030F16	30	.5000 (12.7)	3.008 (76.39)	2.954 (75.02)	2.165 (55)	3.268 (83)
QPEHTD8A30030F20		.6250 (15.88)				
QPEHTD8A30032F16	32	.5000 (12.7)	3.208 (81.49)	3.154 (80.12)	2.362 (60)	3.425 (87)
QPEHTD8A30032F20		.6250 (15.88)				

**Bore Tolerance:**  $+0.020 \begin{pmatrix} +0.051 \\ +0.005 \end{pmatrix}$

Larger number of teeth on the next page

**O.D. Tolerance:** 22 to 32 teeth  $+0.004 \begin{pmatrix} +0.10 \\ -0.000 \end{pmatrix}$





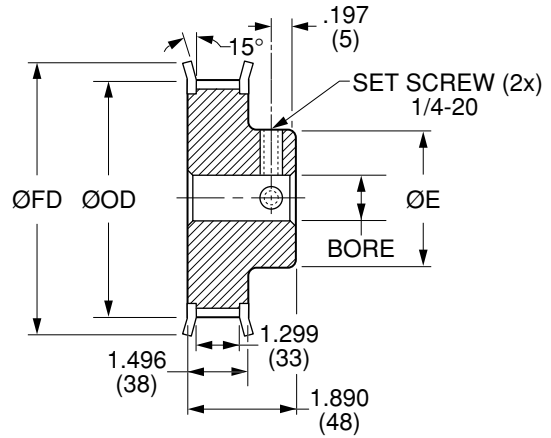
Quality  
Transmission  
Components

# HTD8 Timing Belt Pulleys

**METRIC Pitch 8 mm HTD (.3150")**  
**FOR BELTS UP TO 30 mm OR 1.181" WIDE**



**MATERIAL:** 2024-T4 or 2024-T351  
Aluminum Alloy  
**FINISH:** Clear Anodize



**NOTE:** Dimensions in ( ) are in mm.

Catalog Number	No. of Teeth	Bore	Pitch Diameter	Outside Diameter ØOD	Hub Diameter ØE	Flange Diameter ØFD
QPEHTD8A30034F16	34	.5000 (12.7)	3.409 (86.58)	3.355 (85.21)	2.756 (70)	3.583 (91)
QPEHTD8A30034F20		.6250 (15.88)				
QPEHTD8A30036F16	36	.5000 (12.7)	3.609 (91.67)	3.555 (90.3)	2.756 (70)	3.819 (97)
QPEHTD8A30036F20		.6250 (15.88)				
QPEHTD8A30038F16	38	.5000 (12.7)	3.810 (96.77)	3.756 (95.39)	2.953 (75)	4.016 (102)
QPEHTD8A30038F20		.6250 (15.88)				
QPEHTD8A30040F16	40	.5000 (12.7)	4.010 (101.86)	3.956 (100.49)	2.953 (75)	4.409 (112)
QPEHTD8A30040F20		.6250 (15.88)				
QPEHTD8A30044F16	44	.5000 (12.7)	4.411 (112.05)	4.357 (110.67)	2.953 (75)	4.724 (120)
QPEHTD8A30044F20		.6250 (15.88)				
QPEHTD8A30048F16	48	.5000 (12.7)	4.812 (122.23)	4.758 (120.86)	2.953 (75)	5.039 (128)
QPEHTD8A30048F20		.6250 (15.88)				

**Bore Tolerance:** +.0020 (+0.051)  
+.0005 (+0.012)

Larger number of teeth on the next page

**O.D. Tolerance:** 34 to 40 teeth +.004 (+0.10)  
-.000 (0)  
44 & 48 teeth +.005 (+0.13)  
-.000 (0)

[www.econobelt.com](http://www.econobelt.com)



Quality Transmission Components

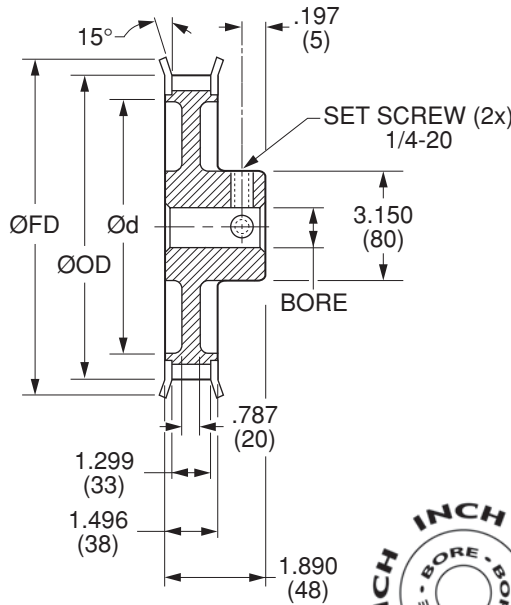
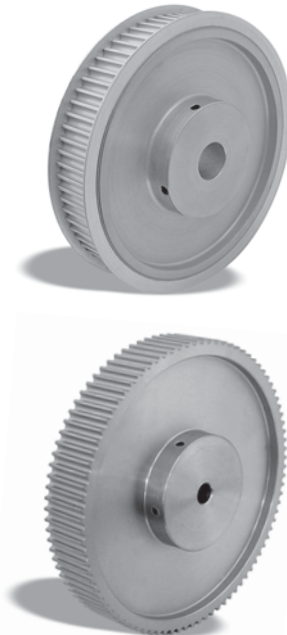
125 Railroad Avenue, Garden City Park, NY 11040-5016  
Phone: (516) 437-6700 • Fax: (516) 328-3343  
e-mail: support@econobelt.com



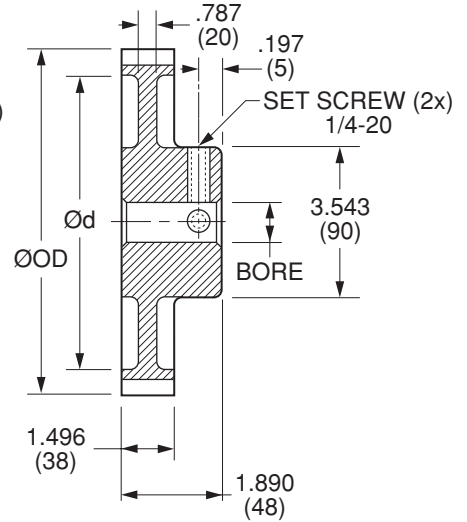
Quality  
Transmission  
Components

# HTD8 Timing Belt Pulleys

**METRIC Pitch 8 mm HTD (.3150")**  
**FOR BELTS UP TO 30 mm OR 1.181" WIDE**



**Fig. 1**  
**DOUBLE FLANGE**



**Fig. 2**  
**NO FLANGE**



**MATERIAL:** 2024-T4 or 2024-T351  
Aluminum Alloy  
**FINISH:** Clear Anodize

**NOTE:** Dimensions in ( ) are in mm.

Catalog Number	No. of Teeth	Fig. No.	Bore	Pitch Diameter	Outside Diameter ØOD	Flange Diameter ØFD	Ød
QPEHTD8A30056F16	56	1	.5000 (12.7)	5.614 (142.6)	5.560 (141.23)	5.906 (150)	4.606 (117)
QPEHTD8A30056F20			.6250 (15.88)				
QPEHTD8A30064F20	64		.6250 (15.88)	6.416 (162.97)	6.362 (161.6)	6.614 (168)	5.433 (138)
QPEHTD8A30064F24			.7500 (19.05)				
QPEHTD8A30072F24	72		.7500 (19.05)	7.218 (183.35)	7.164 (181.97)	7.559 (192)	6.220 (158)
QPEHTD8A30072F32			1.0000 (25.4)				
QPEHTD8A30080N24	80	2	.7500 (19.05)	8.020 (203.72)	7.966 (202.35)	—	7.087 (180)
QPEHTD8A30080N32			1.0000 (25.4)				
QPEHTD8A30090N24	90		.7500 (19.05)	9.023 (229.18)	8.969 (227.81)	—	8.031 (204)
QPEHTD8A30090N32			1.0000 (25.4)				

**Bore Tolerance:** +.0020 (+.051)  
+.0005 (+.012)

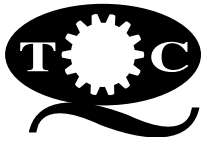
**O.D. Tolerance:** 56 & 64 teeth +.005 (+.013)  
-.000 (0)  
72 to 90 teeth +.006 (+.015)  
-.000 (0)

www.econobelt.com



Quality Transmission Components

125 Railroad Avenue, Garden City Park, NY 11040-5016  
Phone: (516) 437-6700 • Fax: (516) 328-3343  
e-mail: support@econobelt.com



Quality  
Transmission  
Components

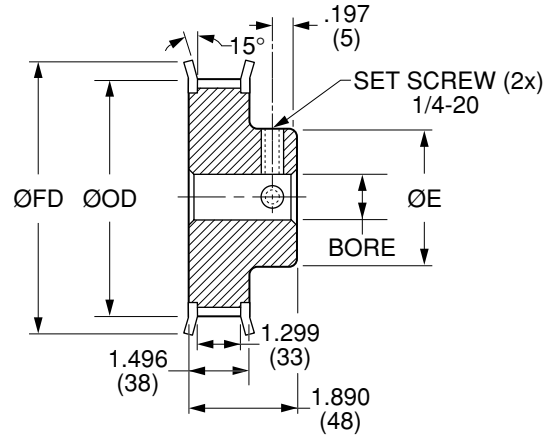
# HTD8 Timing Belt Pulleys

**METRIC Pitch 8 mm HTD (.3150")**  
**FOR BELTS UP TO 30 mm OR 1.181" WIDE**

HTD8 TIMING BELT PULLEYS



**MATERIAL:** AISI 1045 Steel  
**FINISH:** Black Oxide



**NOTE:** Dimensions in ( ) are in mm.

Catalog Number	No. of Teeth	Bore	Pitch Diameter	Outside Diameter ØOD	Hub Diameter ØE	Flange Diameter ØFD
QPEHTD8S30022F16	22	.5000 (12.7)	2.206 (56.02)	2.152 (54.65)	1.693 (43)	2.362 (60)
QPEHTD8S30022F20		.6250 (15.88)				
QPEHTD8S30024F16	24	.5000 (12.7)	2.406 (61.12)	2.352 (59.74)	1.772 (45)	2.598 (66)
QPEHTD8S30024F20		.6250 (15.88)				
QPEHTD8S30026F16	26	.5000 (12.7)	2.607 (66.21)	2.553 (64.84)	1.969 (50)	2.756 (70)
QPEHTD8S30026F20		.6250 (15.88)				
QPEHTD8S30028F16	28	.5000 (12.7)	2.807 (71.3)	2.753 (69.93)	1.969 (50)	2.953 (75)
QPEHTD8S30028F20		.6250 (15.88)				
QPEHTD8S30030F16	30	.5000 (12.7)	3.008 (76.39)	2.954 (75.02)	2.165 (55)	3.268 (83)
QPEHTD8S30030F20		.6250 (15.88)				
QPEHTD8S30032F16	32	.5000 (12.7)	3.208 (81.49)	3.154 (80.12)	2.362 (60)	3.425 (87)
QPEHTD8S30032F20		.6250 (15.88)				

**Bore Tolerance:** +.0020 (+0.051)  
+.0005 (+0.012)

Larger number of teeth on the next page

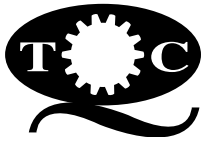
**O.D. Tolerance:** 22 to 32 teeth +.004 (+0.10)  
-.000 (0)

[www.econobelt.com](http://www.econobelt.com)



Quality Transmission Components

125 Railroad Avenue, Garden City Park, NY 11040-5016  
Phone: (516) 437-6700 • Fax: (516) 328-3343  
e-mail: support@econobelt.com



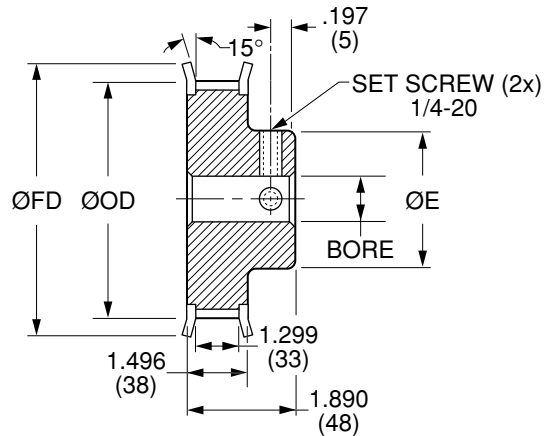
Quality  
Transmission  
Components

# HTD8 Timing Belt Pulleys

**METRIC Pitch 8 mm HTD (.3150")**  
**FOR BELTS UP TO 30 mm OR 1.181" WIDE**



**MATERIAL:** AISI 1045 Steel  
**FINISH:** Black Oxide



**NOTE:** Dimensions in ( ) are in mm.

Catalog Number	No. of Teeth	Bore	Pitch Diameter	Outside Diameter ØOD	Hub Diameter ØE	Flange Diameter ØFD
QPEHTD8S30034F16 QPEHTD8S30034F20	34	.5000 (12.7) .6250 (15.88)	3.409 (86.58)	3.355 (85.21)	2.756 (70)	3.583 (91)
QPEHTD8S30036F16 QPEHTD8S30036F20	36	.5000 (12.7) .6250 (15.88)	3.609 (91.67)	3.555 (90.3)	2.756 (70)	3.819 (97)
QPEHTD8S30038F16 QPEHTD8S30038F20	38	.5000 (12.7) .6250 (15.88)	3.810 (96.77)	3.756 (95.39)	2.953 (75)	4.016 (102)
QPEHTD8S30040F16 QPEHTD8S30040F20	40	.5000 (12.7) .6250 (15.88)	4.010 (101.86)	3.956 (100.49)	2.953 (75)	4.409 (112)
QPEHTD8S30044F16 QPEHTD8S30044F20	44	.5000 (12.7) .6250 (15.88)	4.411 (112.05)	4.357 (110.67)	2.953 (75)	4.724 (120)
QPEHTD8S30048F16 QPEHTD8S30048F20	48	.5000 (12.7) .6250 (15.88)	4.812 (122.23)	4.758 (120.86)	2.953 (75)	5.039 (128)

**Bore Tolerance:** +.0020 (+0.051)  
+.0005 (+0.012)

Larger number of teeth on the next page

**O.D. Tolerance:** 34 to 40 teeth +.004 (+0.10)  
-.000 (0)  
44 & 48 teeth +.005 (+0.13)  
-.000 (0)

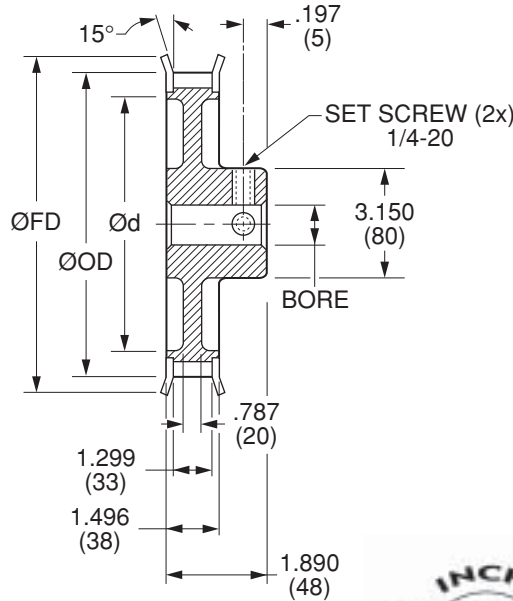




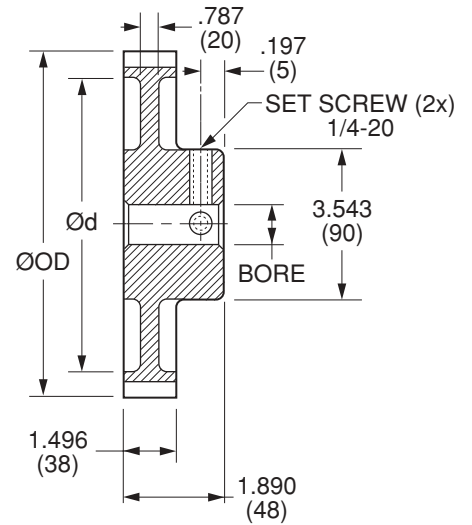
Quality  
Transmission  
Components

# HTD8 Timing Belt Pulleys

**METRIC Pitch 8 mm HTD (.3150")  
FOR BELTS UP TO 30 mm OR 1.181" WIDE**



**Fig. 1  
DOUBLE FLANGE**



**Fig. 2  
NO FLANGE**



**MATERIAL:** AISI 1045 Steel  
**FINISH:** Black Oxide

**NOTE:** Dimensions in ( ) are in mm.

Catalog Number	No. of Teeth	Fig. No.	Bore	Pitch Diameter	Outside Diameter ØOD	Flange Diameter ØFD	Ød
QPEHTD8S30056F16	56	1	.5000 (12.7)	5.614 (142.6)	5.560 (141.23)	5.906 (150)	4.606 (117)
QPEHTD8S30056F20			.6250 (15.88)				
QPEHTD8S30064F20	64	1	.6250 (15.88)	6.416 (162.97)	6.362 (161.6)	6.614 (168)	5.433 (138)
QPEHTD8S30064F24			.7500 (19.05)				
QPEHTD8S30072F24	72	1	.7500 (19.05)	7.218 (183.35)	7.164 (181.97)	7.559 (192)	6.220 (158)
QPEHTD8S30072F32			1.0000 (25.4)				
QPEHTD8S30080N24	80	2	.7500 (19.05)	8.020 (203.72)	7.966 (202.35)	—	7.087 (180)
QPEHTD8S30080N32			1.0000 (25.4)				
QPEHTD8S30090N24	90	2	.7500 (19.05)	9.023 (229.18)	8.969 (227.81)	—	8.031 (204)
QPEHTD8S30090N32			1.0000 (25.4)				

**Bore Tolerance:** +.0020 (+0.051)  
+.0005 (+0.012)

**O.D. Tolerance:** 56 & 64 teeth +.005 (+0.13)  
-.000 (0)  
72 to 90 teeth +.006 (+0.15)  
-.000 (0)

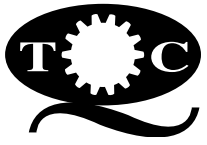
Larger number of teeth on the next page

www.econobelt.com



Quality Transmission Components

125 Railroad Avenue, Garden City Park, NY 11040-5016  
Phone: (516) 437-6700 • Fax: (516) 328-3343  
e-mail: support@econobelt.com



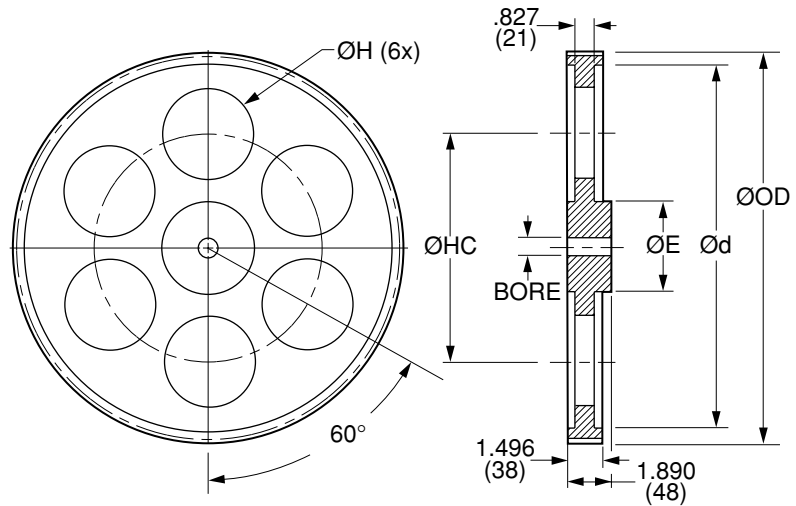
Quality  
Transmission  
Components

# HTD8 Timing Belt Pulleys

**METRIC Pitch 8 mm HTD (.3150")**  
**FOR BELTS UP TO 30 mm OR 1.181" WIDE**



**MATERIAL:** AISI 1045 Steel  
**FINISH:** Black Oxide



**NOTE:** Dimensions in ( ) are in mm.

Catalog Number	No. of Teeth	Bore	Pitch Diameter	Outside Diameter ØOD	Hub Diameter ØE	Ød	ØHC	ØH
QPEHTD8S30112N24	112	.7500 (19.05)	11.229 (285.21)	11.175 (283.83)	3.543 (90)	10.236 (260)	6.890 (175)	2.362 (60)
QPEHTD8S30112N32		1.0000 (25.4)						
QPEHTD8S30120N24	120	.7500 (19.05)	12.031 (305.58)	11.977 (304.21)	3.543 (90)	11.024 (280)	7.283 (185)	2.559 (65)
QPEHTD8S30120N32		1.0000 (25.4)						
QPEHTD8S30144N24	144	.7500 (19.05)	14.437 (366.69)	14.383 (365.32)	3.543 (90)	13.425 (341)	8.504 (216)	2.953 (75)
QPEHTD8S30144N32		1.0000 (25.4)						
QPEHTD8S30168N24	168	.7500 (19.05)	16.843 (427.81)	16.789 (426.44)	3.937 (100)	15.827 (402)	9.843 (250)	3.937 (100)
QPEHTD8S30168N32		1.0000 (25.4)						
QPEHTD8S30192N24	192	.7500 (19.05)	19.249 (488.92)	19.195 (487.55)	3.937 (100)	18.228 (463)	11.102 (282)	4.331 (110)
QPEHTD8S30192N32		1.0000 (25.4)						

**Bore Tolerance:** +.0020 (+0.051)  
+.0005 (+0.012)

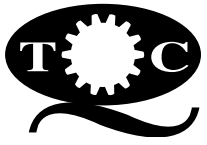
**O.D. Tolerance:** 112 & 120 teeth +.006 (+0.15)  
-.000 (0)  
144 to 192 teeth +.007 (+0.18)  
-.000 (0)

[www.econobelt.com](http://www.econobelt.com)



Quality Transmission Components

125 Railroad Avenue, Garden City Park, NY 11040-5016  
Phone: (516) 437-6700 • Fax: (516) 328-3343  
e-mail: support@econobelt.com



Quality  
Transmission  
Components

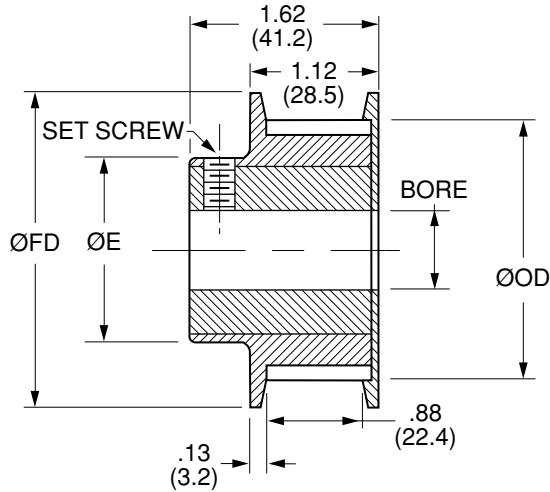
# HTD8 Timing Belt Pulleys

**METRIC Pitch 8 mm HTD (.3150")**  
**FOR BELTS UP TO 20 mm OR .787" WIDE**

HTD8 TIMING BELT PULLEYS



**MATERIAL:**  
Pulley - Nylon – Black, Fiberglass Reinforced  
Insert - Aluminum



NOTE: Dimensions in ( ) are mm.

Catalog Number	No. of Teeth	Bore	P.D.	ØOD ±.005 (±0.13)	Hub Diameter ØE	Flange Diameter ØFD	Set Screw
QPEHTD8N20014F16 QPEHTD8N20014F20	14	.5000 (12.7) .6250 (15.88)	1.404 (35.66)	1.349 (34.27)	1.12 (28.5)	1.75 (44.5)	#10-24
QPEHTD8N20018F16 QPEHTD8N20018F20	18	.5000 (12.7) .6250 (15.88)	1.804 (45.82)	1.750 (44.45)	1.50 (38.1)	2.15 (54.6)	#10-24 1/4-20
QPEHTD8N20022F16 QPEHTD8N20022F20	22	.5000 (12.7) .6250 (15.88)	2.206 (56.03)	2.152 (54.66)	1.50 (38.1)	2.56 (65)	#10-24 1/4-20
QPEHTD8N20024F16 QPEHTD8N20024F20 QPEHTD8N20024F24	24	.5000 (12.7) .6250 (15.88) .7500 (19.05)	2.406 (61.11)	2.352 (59.74)	1.50 (38.1)	2.75 (69.9)	#10-24 1/4-20 1/4-20
QPEHTD8N20026F16 QPEHTD8N20026F20	26	.5000 (12.7) .6250 (15.88)	2.607 (66.22)	2.553 (64.85)	1.50 (38.1)	2.95 (74.9)	#10-24 1/4-20
QPEHTD8N20028F16 QPEHTD8N20028F20	28	.5000 (12.7) .6250 (15.88)	2.807 (71.3)	2.759 (70.08)	1.50 (38.1)	3.14 (79.8)	#10-24 1/4-20

Bore Tolerance: +.0015 (+0.038)  
+.0005 (+0.012)

Larger number of teeth on the next page

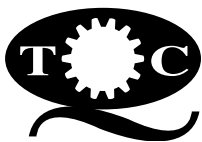
Other bore sizes available on special request.  
See page 1-187

www.econobelt.com



Quality Transmission Components

125 Railroad Avenue, Garden City Park, NY 11040-5016  
Phone: (516) 437-6700 • Fax: (516) 328-3343  
e-mail: support@econobelt.com



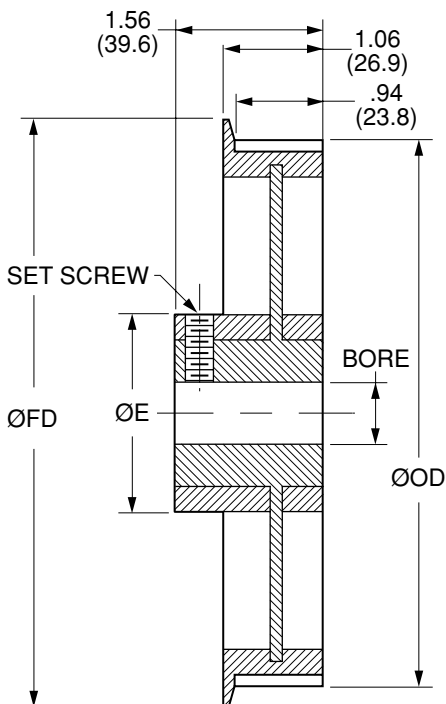
Quality  
Transmission  
Components

# HTD8 Timing Belt Pulleys

**METRIC Pitch 8 mm HTD (.3150")**  
**FOR BELTS UP TO 20 mm OR .787" WIDE**



**MATERIAL:**  
Pulley - Nylon – Black, Fiberglass Reinforced  
Insert - Aluminum



**NOTE:** Dimensions in ( ) are mm.

Catalog Number	No. of Teeth	Bore	P.D.	ØOD ±.005 (±0.13)	Hub Diameter ØE	Flange Diameter ØFD	Set Screw
QPEHTD8N20030S16	30	.5000 (12.7)	3.008 (76.4)	2.958 (75.13)	1.50 (38.1)	3.35 (85.1)	#10-24
QPEHTD8N20030S20		.6250 (15.88)					1/4-20
QPEHTD8N20032S16	32	.5000 (12.7)	3.208 (81.48)	3.156 (80.16)	1.50 (38.1)	3.54 (89.9)	#10-24
QPEHTD8N20034S16		.5000 (12.7)					3.409 (86.59)
QPEHTD8N20036S16	36	.5000 (12.7)	3.609 (91.67)	3.555 (90.3)	2.00 (50.8)	3.93 (99.8)	#10-24
QPEHTD8N20036S20		.6250 (15.88)					1/4-20
QPEHTD8N20038S16	38	.5000 (12.7)	3.810 (96.77)	3.756 (95.4)	2.00 (50.8)	4.13 (104.9)	#10-24
QPEHTD8N20040S16		.5000 (12.7)					4.010 (101.85)
QPEHTD8N20040S20	40	.6250 (15.88)	4.812 (122.23)	4.758 (120.85)	2.00 (50.8)	5.16 (131.1)	1/4-20
QPEHTD8N20044S16	44	.5000 (12.7)	4.411 (112.04)	4.357 (110.67)	2.00 (50.8)	4.77 (121.2)	#10-24
QPEHTD8N20048S20		.6250 (15.88)					4.812 (122.23)
QPEHTD8N20056S20	56	.6250 (15.88)	5.614 (142.6)	5.560 (141.22)	2.00 (50.8)	5.95 (151.1)	1/4-20

**Bore Tolerance:** +.0015 (+0.038)  
+.0005 (+0.012)

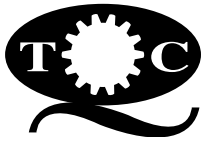
Other bore sizes available on special request.  
See page 1-188

[www.econobelt.com](http://www.econobelt.com)



Quality Transmission Components

125 Railroad Avenue, Garden City Park, NY 11040-5016  
Phone: (516) 437-6700 • Fax: (516) 328-3343  
e-mail: support@econobelt.com



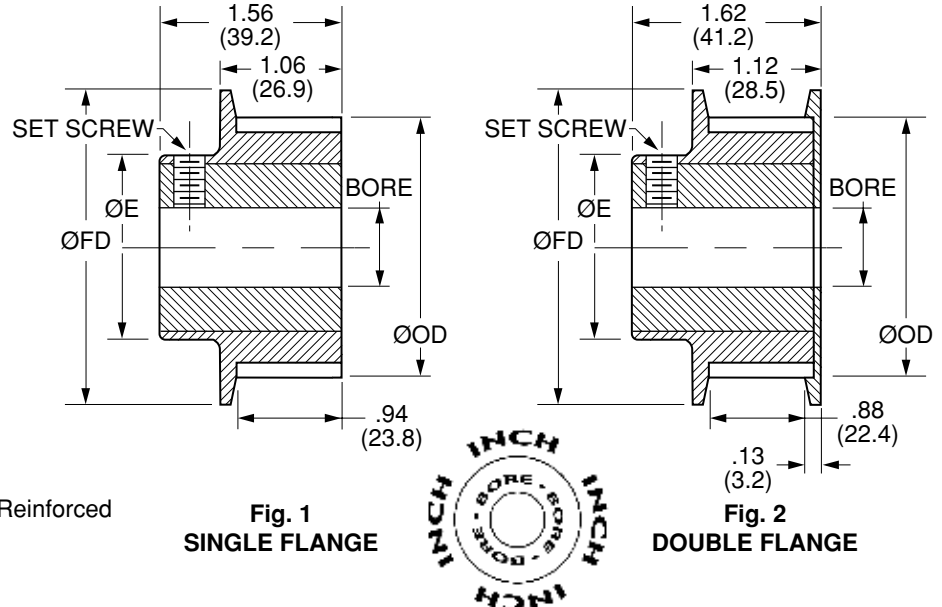
Quality  
Transmission  
Components

# HTD8 Timing Belt Pulleys

HTD8 TIMING BELT PULLEYS

**METRIC Pitch 8 mm HTD (.3150")**

**FOR BELTS UP TO 20 mm OR .787" WIDE**



**MATERIAL:**

**Pulley** - Nylon – Black, Fiberglass Reinforced  
**Insert** - Aluminum

**Fig. 1  
SINGLE FLANGE**

**Fig. 2  
DOUBLE FLANGE**

These bore sizes available on special request

NOTE: Dimensions in ( ) are mm.

Catalog Number	No. of Teeth	Fig. No.	Bore	P.D.	ØOD ±.005 (±0.13)	Hub Diameter ØE	Flange Diameter ØFD	Set Screw
QPEHTD8N20014S16	14	1	.5000 (12.7)	1.404 (35.66)	1.349 (34.27)	1.12 (28.5)	1.75 (44.5)	#10-24
QPEHTD8N20014S20			.6250 (15.88)					1/4-20
QPEHTD8N20018F24	18	2	.7500 (19.05)	1.804 (45.82)	1.750 (44.45)	1.50 (38.1)	2.15 (54.6)	1/4-20
QPEHTD8N20018S16			.5000 (12.7)					#10-24
QPEHTD8N20018S20			.6250 (15.88)					1/4-20
QPEHTD8N20018S24			.7500 (19.05)					1/4-20
QPEHTD8N20022F24	22	2	.7500 (19.05)	2.206 (56.03)	2.152 (54.66)	1.50 (38.1)	2.56 (65)	1/4-20
QPEHTD8N20022S16			.5000 (12.7)					#10-24
QPEHTD8N20022S20			.6250 (15.88)					1/4-20
QPEHTD8N20022S24	.7500 (19.05)	1/4-20						
QPEHTD8N20024S16	24	1	.5000 (12.7)	2.406 (61.11)	2.352 (59.74)	1.50 (38.1)	2.75 (69.9)	#10-24
QPEHTD8N20024S20			.6250 (15.88)					1/4-20
QPEHTD8N20024S24			.7500 (19.05)					1/4-20
QPEHTD8N20026F24	26	2	.7500 (19.05)	2.607 (66.22)	2.553 (64.85)	1.50 (38.1)	2.95 (74.9)	1/4-20
QPEHTD8N20026S16			.5000 (12.7)					#10-24
QPEHTD8N20026S20			.6250 (15.88)					1/4-20
QPEHTD8N20026S24			.7500 (19.05)					1/4-20
QPEHTD8N20028F24	28	2	.7500 (19.05)	2.807 (71.3)	2.759 (70.08)	1.50 (38.1)	3.14 (79.8)	1/4-20
QPEHTD8N20028S16			.5000 (12.7)					#10-24
QPEHTD8N20028S20			.6250 (15.88)					1/4-20
QPEHTD8N20028S24			.7500 (19.05)					1/4-20

**Bore Tolerance:** +.0015 (+0.038)  
+.0005 (+0.012)

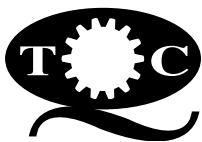
Larger number of teeth on the next page

www.econobelt.com



Quality Transmission Components

125 Railroad Avenue, Garden City Park, NY 11040-5016  
Phone: (516) 437-6700 • Fax: (516) 328-3343  
e-mail: support@econobelt.com



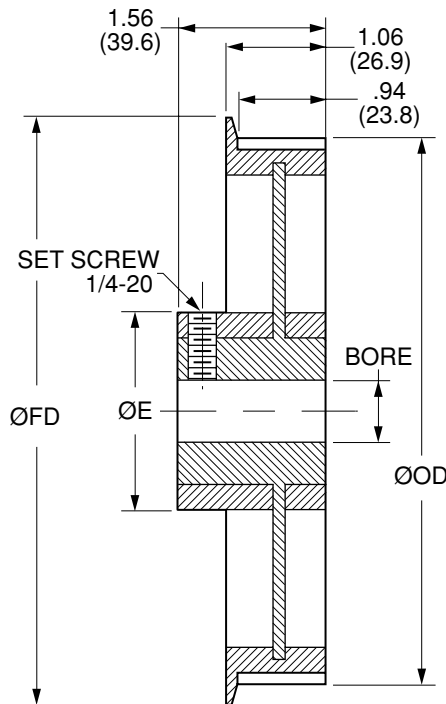
Quality  
Transmission  
Components

# HTD8 Timing Belt Pulleys

**METRIC Pitch 8 mm HTD (.3150")**  
**FOR BELTS UP TO 20 mm OR .787" WIDE**



**MATERIAL:**  
Pulley - Nylon – Black, Fiberglass Reinforced  
Insert - Aluminum



These bore sizes available on special request

NOTE: Dimensions in ( ) are mm.

Catalog Number	No. of Teeth	Bore	P.D.	ØOD ±.005 (±0.13)	Hub Diameter ØE	Flange Diameter ØFD
QPEHTD8N20030S24	30	.7500 (19.05)	3.008 (76.4)	2.958 (75.13)	1.50 (38.1)	3.35 (85.1)
QPEHTD8N20032S20	32	.6250 (15.88)	3.208 (81.48)	3.156 (80.16)	1.50 (38.1)	3.54 (89.9)
QPEHTD8N20032S24		.7500 (19.05)				
QPEHTD8N20034S20	34	.6250 (15.88)	3.409 (86.59)	3.355 (85.22)	2.00 (50.8)	3.82 (97)
QPEHTD8N20034S24		.7500 (19.05)				
QPEHTD8N20036S24	36	.7500 (19.05)	3.609 (91.67)	3.555 (90.3)	2.00 (50.8)	3.93 (99.8)
QPEHTD8N20038S20	38	.6250 (15.88)	3.810 (96.77)	3.756 (95.4)	2.00 (50.8)	4.13 (104.9)
QPEHTD8N20038S24		.7500 (19.05)				
QPEHTD8N20040S24	40	.7500 (19.05)	4.010 (101.85)	3.956 (100.48)	2.00 (50.8)	4.33 (110)
QPEHTD8N20044S20	44	.6250 (15.88)	4.411 (112.04)	4.357 (110.67)	2.00 (50.8)	4.77 (121.2)
QPEHTD8N20044S24		.7500 (19.05)				
QPEHTD8N20048S24	48	.7500 (19.05)	4.812 (122.23)	4.758 (120.85)	2.00 (50.8)	5.16 (131.1)
QPEHTD8N20048S32		1.0000 (25.4)				
QPEHTD8N20056S24	56	.7500 (19.05)	5.614 (142.6)	5.560 (141.22)	2.00 (50.8)	5.95 (151.1)
QPEHTD8N20056S32		1.0000 (25.4)				

Bore Tolerance: +.0015 (+0.038)  
+.0005 (+0.012)

[www.econobelt.com](http://www.econobelt.com)



Quality Transmission Components

125 Railroad Avenue, Garden City Park, NY 11040-5016  
Phone: (516) 437-6700 • Fax: (516) 328-3343  
e-mail: support@econobelt.com