



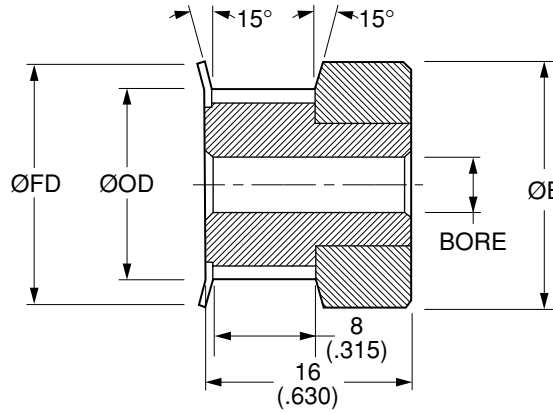
Quality
Transmission
Components

T2.5 Timing Belt Pulleys

METRIC Pitch 2.5 mm T2.5 (0984")
FOR BELTS UP TO 6 mm OR .236" WIDE



MATERIAL: 2024-T4 or 2024-T351
Aluminum Alloy
FINISH: Clear Anodize



NOTE: Dimensions in () are in inches.

Catalog Number	No. of Teeth	Bore F8	Pitch Diameter	Outside Diameter ØOD	Hub Diameter ØE	Flange Diameter ØFD
QPMT2.5A06010F04	10	4 (.1575)	8.05 (.317)	7.45 (.293)	11 (.433)	11 (.433)
QPMT2.5A06012F04	12		9.6 (.378)	9 (.354)	13 (.512)	14 (.551)
QPMT2.5A06013F04	13		10.4 (.409)	9.8 (.386)	14 (.551)	14 (.551)
QPMT2.5A06014F04	14		11.2 (.441)	10.6 (.417)	15 (.591)	15 (.591)
QPMT2.5A06015F04	15		12 (.472)	11.4 (.449)	15 (.591)	15 (.591)
QPMT2.5A06016F04	16		12.8 (.504)	12.2 (.480)		

Bore Tolerance (F8): 4 mm $+0.028 \begin{pmatrix} +.0011 \\ +0.010 \end{pmatrix} \begin{pmatrix} +.0004 \\ \end{pmatrix}$

Larger number of teeth on the next page

O.D. Tolerance: 10 to 16 teeth $+0.05 \begin{pmatrix} +.002 \\ 0 \end{pmatrix} \begin{pmatrix} -.000 \\ \end{pmatrix}$

NOTE: T2.5 Profile Per DIN 7721-2 Rev 6/89.

T2.5 TIMING BELT PULLEYS

www.econobelt.com



Quality Transmission Components

125 Railroad Avenue, Garden City Park, NY 11040-5016
Phone: (516) 437-6700 • Fax: (516) 328-3343
e-mail: support@econobelt.com

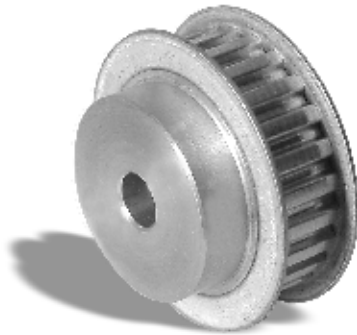


Quality
Transmission
Components

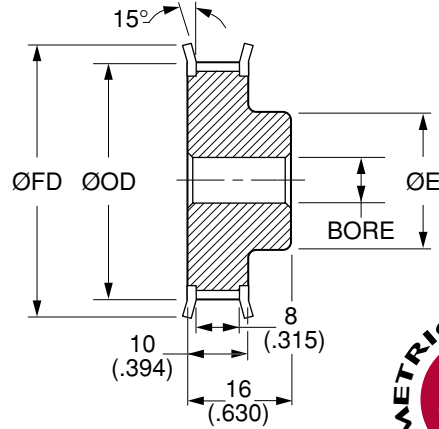
T2.5 Timing Belt Pulleys

**METRIC Pitch 2.5 mm T2.5 (.0984")
FOR BELTS UP TO 6 mm OR .236" WIDE**

T2.5 TIMING BELT PULLEYS



MATERIAL: 2024-T4 or 2024-T351
Aluminum Alloy
FINISH: Clear Anodize



NOTE: Dimensions in () are in inches.

Catalog Number	No. of Teeth	Bore F8	Pitch Diameter	Outside Diameter ØOD	Hub Diameter ØE	Flange Diameter ØFD
QPMT2.5A06017F04	17	4 (.1575)	13.6 (.535)	13 (.512)	9.5 (.374)	18 (.709)
QPMT2.5A06018F04	18		14.4 (.567)	13.8 (.543)		
QPMT2.5A06019F04	19		15.2 (.598)	14.6 (.575)	10 (.394)	18 (.709)
QPMT2.5A06020F04	20		16 (.630)	15.4 (.606)		
QPMT2.5A06021F04	21		16.8 (.661)	16.2 (.638)	11 (.433)	23 (.906)
QPMT2.5A06022F04	22		17.6 (.693)	17 (.669)		
QPMT2.5A06024F04	24		19.15 (.754)	18.55 (.730)	12 (.472)	23 (.906)
QPMT2.5A06025F04	25		19.95 (.785)	19.35 (.762)		
QPMT2.5A06026F04	26	20.75 (.817)	20.15 (.793)	13 (.512)	25 (.984)	
QPMT2.5A06027F06	27	21.55 (.848)	20.95 (.825)			
QPMT2.5A06028F06	28	6 (.2362)	22.35 (.880)	21.75 (.856)	15 (.591)	28 (1.102)
QPMT2.5A06029F06	29		23.15 (.911)	22.55 (.888)		
QPMT2.5A06030F06	30		23.95 (.943)	23.35 (.919)	16 (.630)	28 (1.102)
QPMT2.5A06032F06	32		25.55 (1.006)	24.95 (.982)		
QPMT2.5A06034F06	34		27.15 (1.069)	26.55 (1.045)	18 (.709)	35 (1.378)
QPMT2.5A06035F06	35		27.95 (1.100)	27.35 (1.077)		
QPMT2.5A06036F06	36		28.75 (1.132)	28.15 (1.108)	20 (.787)	38 (1.496)
QPMT2.5A06038F06	38		30.35 (1.195)	29.75 (1.171)		
QPMT2.5A06040F06	40	31.9 (1.256)	31.3 (1.232)	22 (.866)	38 (1.496)	

Bore Tolerance (F8): 4 & 6 mm $+0.028 \begin{pmatrix} +.0011 \\ +0.010 \end{pmatrix} \begin{pmatrix} +.0004 \\ \end{pmatrix}$

Larger number of teeth on the next page

O.D. Tolerance: 17 to 32 teeth $+0.05 \begin{pmatrix} +.002 \\ 0 \end{pmatrix} \begin{pmatrix} -.000 \\ \end{pmatrix}$
34 to 40 teeth $+0.08 \begin{pmatrix} +.003 \\ 0 \end{pmatrix} \begin{pmatrix} -.000 \\ \end{pmatrix}$

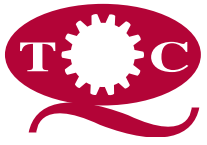
NOTE: T2.5 Profile Per DIN 7721-2 Rev 6/89.

www.econobelt.com



Quality Transmission Components

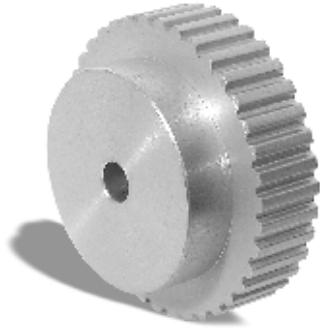
125 Railroad Avenue, Garden City Park, NY 11040-5016
Phone: (516) 437-6700 • Fax: (516) 328-3343
e-mail: support@econobelt.com



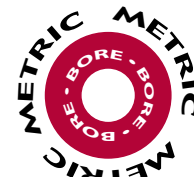
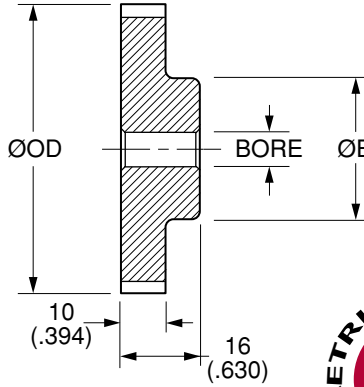
Quality
Transmission
Components

T2.5 Timing Belt Pulleys

METRIC Pitch 2.5 mm T2.5 (.0984")
FOR BELTS UP TO 6 mm OR .236" WIDE



MATERIAL: 2024-T4 or 2024-T351
Aluminum Alloy
FINISH: Clear Anodize



NOTE: Dimensions in () are in inches.

Catalog Number	No. of Teeth	Bore F8	Pitch Diameter	Outside Diameter ØOD	Hub Diameter ØE
QPMT2.5A06042N08	42	8 (.3150)	33.5 (1.319)	32.9 (1.295)	22 (.866)
QPMT2.5A06044N08	44		35.1 (1.382)	34.5 (1.358)	24 (.945)
QPMT2.5A06045N08	45		35.9 (1.413)	35.3 (1.390)	24 (.945)
QPMT2.5A06048N08	48		38.3 (1.508)	37.7 (1.484)	26 (1.024)
QPMT2.5A06050N08	50		39.9 (1.571)	39.3 (1.547)	26 (1.024)
QPMT2.5A06060N08	60		47.85 (1.884)	47.25 (1.860)	34 (1.339)
QPMT2.5A06065N08	65		51.8 (2.039)	51.2 (2.016)	36 (1.417)
QPMT2.5A06070N08	70		55.8 (2.197)	55.2 (2.173)	38 (1.496)
QPMT2.5A06072N08	72		57.4 (2.260)	56.8 (2.236)	38 (1.496)
QPMT2.5A06090N08	90		71.75 (2.825)	71.15 (2.801)	40 (1.575)
QPMT2.5A06100N08	100		79.7 (3.138)	79.1 (3.114)	40 (1.575)

Bore Tolerance (F8): 8 mm $+0.035 \begin{pmatrix} +.0014 \\ +0.013 \end{pmatrix} \begin{pmatrix} +.0005 \end{pmatrix}$

O.D. Tolerance: 42 to 60 teeth $+0.08 \begin{pmatrix} +.003 \\ 0 \end{pmatrix} \begin{pmatrix} -.000 \end{pmatrix}$
65 to 100 teeth $+0.10 \begin{pmatrix} +.004 \\ 0 \end{pmatrix} \begin{pmatrix} -.000 \end{pmatrix}$

NOTE: T2.5 Profile Per DIN 7721-2 Rev 6/89.

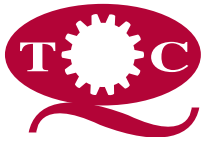
T2.5 TIMING BELT PULLEYS

www.econobelt.com



Quality Transmission Components

125 Railroad Avenue, Garden City Park, NY 11040-5016
Phone: (516) 437-6700 • Fax: (516) 328-3343
e-mail: support@econobelt.com



Quality
Transmission
Components

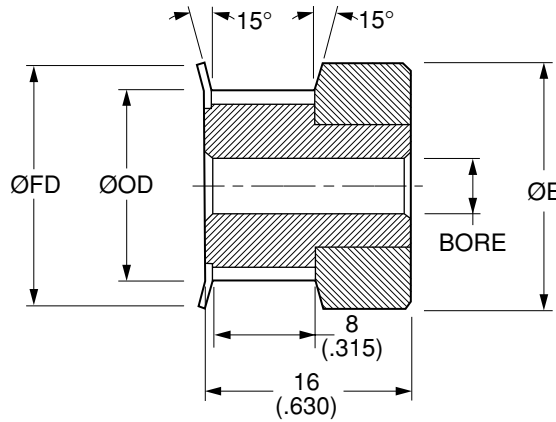
T2.5 Timing Belt Pulleys

**METRIC Pitch 2.5 mm T2.5 (.0984")
FOR BELTS UP TO 6 mm OR .236" WIDE**

T2.5 TIMING BELT PULLEYS



MATERIAL: AISI 1045 Steel
FINISH: Black Oxide



NOTE: Dimensions in () are in inches.

Catalog Number	No. of Teeth	Bore F8	Pitch Diameter	Outside Diameter ØOD	Hub Diameter ØE	Flange Diameter ØFD
QPMT2.5S06010F04	10	4 (.1575)	8.05 (.317)	7.45 (.293)	11 (.433)	11 (.433)
QPMT2.5S06012F04	12		9.6 (.378)	9 (.354)	13 (.512)	14 (.551)
QPMT2.5S06013F04	13		10.4 (.409)	9.8 (.386)	14 (.551)	14 (.551)
QPMT2.5S06014F04	14		11.2 (.441)	10.6 (.417)	15 (.591)	15 (.591)
QPMT2.5S06015F04	15		12 (.472)	11.4 (.449)	15 (.591)	15 (.591)
QPMT2.5S06016F04	16		12.8 (.504)	12.2 (.480)		

Bore Tolerance (F8): 4 mm $+0.028 \begin{pmatrix} +.0011 \\ +0.010 \end{pmatrix} \begin{pmatrix} +.0004 \\ \end{pmatrix}$

Larger number of teeth on the next page

O.D. Tolerance: 10 to 16 teeth $+0.05 \begin{pmatrix} +.002 \\ 0 \end{pmatrix} \begin{pmatrix} -0.000 \\ \end{pmatrix}$

NOTE: T2.5 Profile Per DIN 7721-2 Rev 6/89.

www.econobelt.com



Quality Transmission Components

125 Railroad Avenue, Garden City Park, NY 11040-5016
Phone: (516) 437-6700 • Fax: (516) 328-3343
e-mail: support@econobelt.com



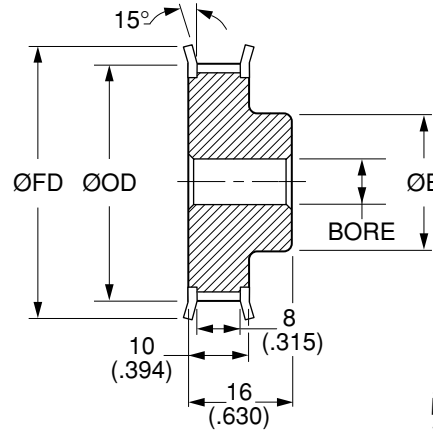
Quality
Transmission
Components

T2.5 Timing Belt Pulleys

**METRIC Pitch 2.5 mm T2.5 (.0984")
FOR BELTS UP TO 6 mm OR .236" WIDE**



MATERIAL: AISI 1045 Steel
FINISH: Black Oxide



T2.5 TIMING BELT PULLEYS

NOTE: Dimensions in () are in inches.

Catalog Number	No. of Teeth	Bore F8	Pitch Diameter	Outside Diameter ØOD	Hub Diameter ØE	Flange Diameter ØFD	
QPMT2.5S06017F04	17	4 (.1575)	13.6 (.535)	13 (.512)	9.5 (.374)	18 (.709)	
QPMT2.5S06018F04	18		14.4 (.567)	13.8 (.543)			
QPMT2.5S06019F04	19		15.2 (.598)	14.6 (.575)			
QPMT2.5S06020F04	20		16 (.630)	15.4 (.606)			
QPMT2.5S06021F04	21		16.8 (.661)	16.2 (.638)			
QPMT2.5S06022F04	22		17.6 (.693)	17 (.669)			
QPMT2.5S06024F04	24		19.15 (.754)	18.55 (.730)			
QPMT2.5S06025F04	25		19.95 (.785)	19.35 (.762)			
QPMT2.5S06026F04	26	20.75 (.817)	20.15 (.793)	13 (.512)	25 (.984)		
QPMT2.5S06027F06	27	6 (.2362)	21.55 (.848)	20.95 (.825)	14 (.551)	28 (1.102)	
QPMT2.5S06028F06	28		22.35 (.880)	21.75 (.856)	15 (.591)		
QPMT2.5S06029F06	29		23.15 (.911)	22.55 (.888)	15 (.591)		
QPMT2.5S06030F06	30		23.95 (.943)	23.35 (.919)	16 (.630)		
QPMT2.5S06032F06	32		25.55 (1.006)	24.95 (.982)	16 (.630)		31 (1.220)
QPMT2.5S06034F06	34		27.15 (1.069)	26.55 (1.045)	18 (.709)		35 (1.378)
QPMT2.5S06035F06	35		27.95 (1.100)	27.35 (1.077)	18 (.709)		35 (1.378)
QPMT2.5S06036F06	36		28.75 (1.132)	28.15 (1.108)	20 (.787)		38 (1.496)
QPMT2.5S06038F06	38		30.35 (1.195)	29.75 (1.171)	20 (.787)		38 (1.496)
QPMT2.5S06040F06	40		31.9 (1.256)	31.3 (1.232)	22 (.866)		38 (1.496)

Bore Tolerance (F8): 4 & 6 mm $+0.028 \begin{pmatrix} +.0011 \\ +0.010 \end{pmatrix} \begin{pmatrix} +.0004 \\ +.0004 \end{pmatrix}$

Larger number of teeth on the next page

O.D. Tolerance: 17 to 32 teeth $+0.05 \begin{pmatrix} +.002 \\ 0 \end{pmatrix} \begin{pmatrix} -.000 \\ -.000 \end{pmatrix}$
34 to 40 teeth $+0.08 \begin{pmatrix} +.003 \\ 0 \end{pmatrix} \begin{pmatrix} -.000 \\ -.000 \end{pmatrix}$

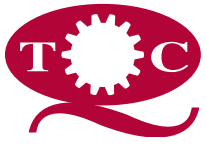
NOTE: T2.5 Profile Per DIN 7721-2 Rev 6/89.

www.econobelt.com



Quality Transmission Components

125 Railroad Avenue, Garden City Park, NY 11040-5016
Phone: (516) 437-6700 • Fax: (516) 328-3343
e-mail: support@econobelt.com



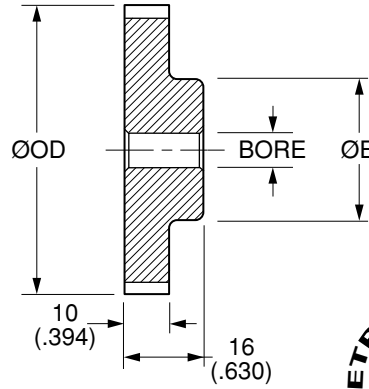
Quality
Transmission
Components

T2.5 Timing Belt Pulleys

**METRIC Pitch 2.5 mm T2.5 (.0984")
FOR BELTS UP TO 6 mm OR .236" WIDE**



MATERIAL: AISI 1045 Steel
FINISH: Black Oxide



NOTE: Dimensions in () are in inches.

Catalog Number	No. of Teeth	Bore F8	Pitch Diameter	Outside Diameter ØOD	Hub Diameter ØE
QPMT2.5S06042N08	42	8 (.3150)	33.5 (1.319)	32.9 (1.295)	22 (.866)
QPMT2.5S06044N08	44		35.1 (1.382)	34.5 (1.358)	24 (.945)
QPMT2.5S06045N08	45		35.9 (1.413)	35.3 (1.390)	24 (.945)
QPMT2.5S06048N08	48		38.3 (1.508)	37.7 (1.484)	26 (1.024)
QPMT2.5S06050N08	50		39.9 (1.571)	39.3 (1.547)	26 (1.024)
QPMT2.5S06060N08	60		47.85 (1.884)	47.25 (1.860)	34 (1.339)
QPMT2.5S06065N08	65		51.8 (2.039)	51.2 (2.016)	36 (1.417)
QPMT2.5S06070N08	70		55.8 (2.197)	55.2 (2.173)	38 (1.496)
QPMT2.5S06072N08	72		57.4 (2.260)	56.8 (2.236)	38 (1.496)
QPMT2.5S06090N08	90		71.75 (2.825)	71.15 (2.801)	40 (1.575)
QPMT2.5S06100N08	100		79.7 (3.138)	79.1 (3.114)	40 (1.575)

Bore Tolerance (F8): 8 mm $+0.035 \begin{pmatrix} +.0014 \\ +0.013 \end{pmatrix} \begin{pmatrix} +.0005 \\ \end{pmatrix}$

O.D. Tolerance: 42 to 60 teeth $+0.08 \begin{pmatrix} +.003 \\ 0 \end{pmatrix} \begin{pmatrix} -.000 \\ \end{pmatrix}$
65 to 100 teeth $+0.10 \begin{pmatrix} +.004 \\ 0 \end{pmatrix} \begin{pmatrix} -.000 \\ \end{pmatrix}$

NOTE: T2.5 Profile Per DIN 7721-2 Rev 6/89.

www.econobelt.com



Quality Transmission Components

125 Railroad Avenue, Garden City Park, NY 11040-5016
Phone: (516) 437-6700 • Fax: (516) 328-3343
e-mail: support@econobelt.com