

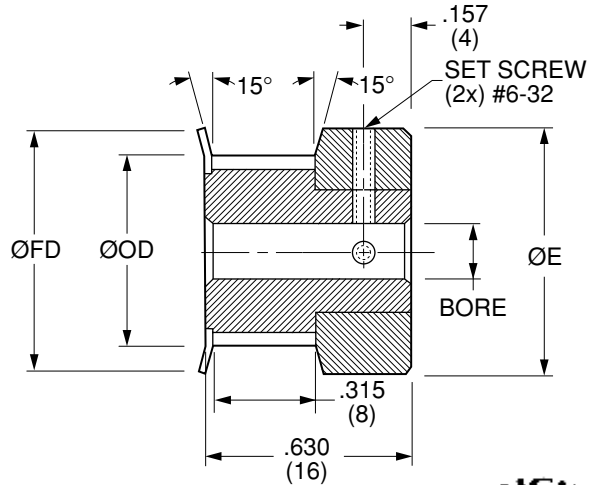
Quality
Transmission
Components

T2.5 Timing Belt Pulleys

METRIC Pitch 2.5 mm T2.5 (.0984")
FOR BELTS UP TO .236" OR 6 mm WIDE



MATERIAL: 2024-T4 or 2024-T351
Aluminum Alloy
FINISH: Clear Anodize



NOTE: Dimensions in () are in mm.

| Catalog Number | No. of Teeth | Bore | Pitch Diameter | Outside Diameter ØOD | Hub Diameter ØE | Flange Diameter ØFD |
|------------------|--------------|---------------|----------------|----------------------|-----------------|---------------------|
| QPET2.5A06010F04 | 10 | .1250 (3.175) | .317 (8.05) | .293 (7.45) | .433 (11) | .433 (11) |
| QPET2.5A06010F06 | | .1875 (4.763) | | | | |
| QPET2.5A06012F04 | 12 | .1250 (3.175) | .378 (9.6) | .354 (9) | .512 (13) | .551 (14) |
| QPET2.5A06012F06 | | .1875 (4.763) | | | | |
| QPET2.5A06013F04 | 13 | .1250 (3.175) | .409 (10.4) | .386 (9.8) | .551 (14) | .551 (14) |
| QPET2.5A06013F06 | | .1875 (4.763) | | | | |
| QPET2.5A06014F04 | 14 | .1250 (3.175) | .441 (11.2) | .417 (10.6) | .591 (15) | .591 (15) |
| QPET2.5A06014F06 | | .1875 (4.763) | | | | |
| QPET2.5A06015F04 | 15 | .1250 (3.175) | .472 (12) | .449 (11.4) | .591 (15) | .591 (15) |
| QPET2.5A06015F06 | | .1875 (4.763) | | | | |
| QPET2.5A06016F04 | 16 | .1250 (3.175) | .504 (12.8) | .480 (12.2) | .591 (15) | .591 (15) |
| QPET2.5A06016F06 | | .1875 (4.763) | | | | |

Bore Tolerance: $+0.0015 \left(\begin{matrix} +0.038 \\ +0.0005 \end{matrix} \right)$
 $+0.0005 \left(\begin{matrix} +0.012 \\ 0 \end{matrix} \right)$

O.D. Tolerance: 10 to 16 teeth $+0.002 \left(\begin{matrix} +0.05 \\ -0.000 \end{matrix} \right)$
 $-0.000 \left(\begin{matrix} +0.05 \\ 0 \end{matrix} \right)$

NOTE: T2.5 Profile Per DIN 7721-2 Rev 6/89.

Larger number of teeth on the next page

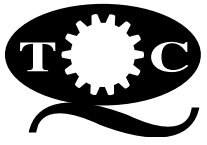
T2.5 TIMING BELT PULLEYS

www.econobelt.com



Quality Transmission Components

125 Railroad Avenue, Garden City Park, NY 11040-5016
Phone: (516) 437-6700 • Fax: (516) 328-3343
e-mail: support@econobelt.com



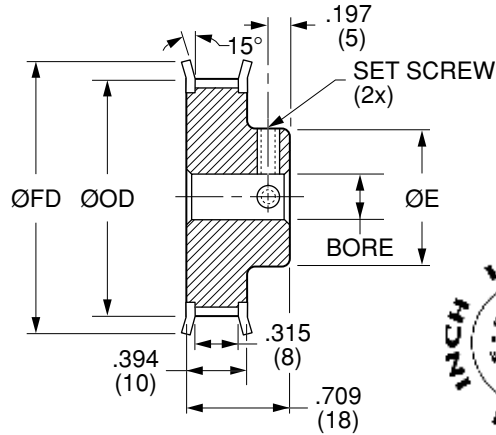
Quality
Transmission
Components

T2.5 Timing Belt Pulleys

**METRIC Pitch 2.5 mm T2.5 (.0984")
FOR BELTS UP TO .236" OR 6 mm WIDE**



MATERIAL: 2024-T4 or 2024-T351
Aluminum Alloy
FINISH: Clear Anodize



NOTE: Dimensions in () are in mm.

| Catalog Number | No. of Teeth | Bore | Pitch Diameter | Outside Diameter ØOD | Hub Diameter ØE | Flange Diameter ØFD | Set Screw |
|------------------|--------------|---------------|----------------|----------------------|-----------------|---------------------|-----------|
| QPET2.5A06017F04 | 17 | .1250 (3.175) | .535 (13.6) | .512 (13) | .374 (9.5) | .709 (18) | #6-32 |
| QPET2.5A06017F06 | | .1875 (4.763) | | | | | |
| QPET2.5A06018F06 | 18 | .1875 (4.763) | .567 (14.4) | .543 (13.8) | .374 (9.5) | .709 (18) | #6-32 |
| QPET2.5A06018F08 | | .2500 (6.35) | | | | | |
| QPET2.5A06019F06 | 19 | .1875 (4.763) | .598 (15.2) | .575 (14.6) | .394 (10) | .709 (18) | #6-32 |
| QPET2.5A06019F08 | | .2500 (6.35) | | | | | |
| QPET2.5A06020F06 | 20 | .1875 (4.763) | .630 (16) | .606 (15.4) | .433 (11) | .768 (19.5) | #6-32 |
| QPET2.5A06020F08 | | .2500 (6.35) | | | | | |
| QPET2.5A06021F06 | 21 | .1875 (4.763) | .661 (16.8) | .638 (16.2) | .433 (11) | .906 (23) | #6-32 |
| QPET2.5A06021F08 | | .2500 (6.35) | | | | | |
| QPET2.5A06022F06 | 22 | .1875 (4.763) | .693 (17.6) | .669 (17) | .472 (12) | .906 (23) | #6-32 |
| QPET2.5A06022F08 | | .2500 (6.35) | | | | | |
| QPET2.5A06024F08 | 24 | .2500 (6.35) | .754 (19.15) | .730 (18.55) | .472 (12) | .906 (23) | #8-32 |
| QPET2.5A06024F10 | | .3125 (7.938) | | | | | |
| QPET2.5A06025F08 | 25 | .2500 (6.35) | .785 (19.95) | .762 (19.35) | .472 (12) | .906 (23) | |
| QPET2.5A06025F10 | | .3125 (7.938) | | | | | |
| QPET2.5A06026F08 | 26 | .2500 (6.35) | .817 (20.75) | .793 (20.15) | .512 (13) | .984 (25) | |
| QPET2.5A06026F10 | | .3125 (7.938) | | | | | |
| QPET2.5A06027F08 | 27 | .2500 (6.35) | .848 (21.55) | .825 (20.95) | .551 (14) | 1.102 (28) | |
| QPET2.5A06027F10 | | .3125 (7.938) | | | | | |
| QPET2.5A06028F08 | 28 | .2500 (6.35) | .880 (22.35) | .856 (21.75) | .591 (15) | 1.102 (28) | |
| QPET2.5A06028F10 | | .3125 (7.938) | | | | | |
| QPET2.5A06029F08 | 29 | .2500 (6.35) | .911 (23.15) | .888 (22.55) | .591 (15) | 1.102 (28) | |
| QPET2.5A06029F10 | | .3125 (7.938) | | | | | |
| QPET2.5A06030F08 | 30 | .2500 (6.35) | .943 (23.95) | .919 (23.35) | .630 (16) | 1.102 (28) | |
| QPET2.5A06030F10 | | .3125 (7.938) | | | | | |

Bore Tolerance: +.0015 (+0.038)
+.0005 (+0.012)

Larger number of teeth on the next page

O.D. Tolerance: 17 to 30 teeth +.002 (+0.05)
-.000 (0)

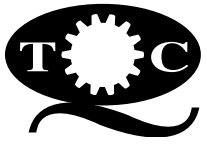
NOTE: T2.5 Profile Per DIN 7721-2 Rev 6/89.

www.econobelt.com



Quality Transmission Components

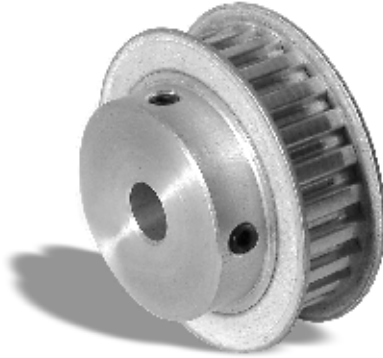
125 Railroad Avenue, Garden City Park, NY 11040-5016
Phone: (516) 437-6700 • Fax: (516) 328-3343
e-mail: support@econobelt.com



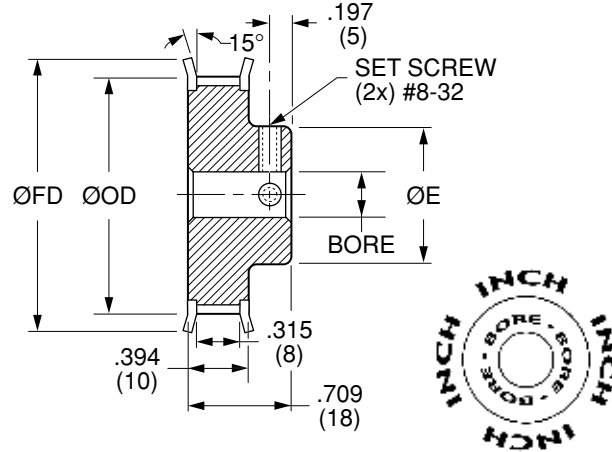
Quality
Transmission
Components

T2.5 Timing Belt Pulleys

**METRIC Pitch 2.5 mm T2.5 (.0984")
FOR BELTS UP TO .236" OR 6 mm WIDE**



MATERIAL: 2024-T4 or 2024-T351
Aluminum Alloy
FINISH: Clear Anodize



NOTE: Dimensions in () are in mm.

| Catalog Number | No. of Teeth | Bore | Pitch Diameter | Outside Diameter ØOD | Hub Diameter ØE | Flange Diameter ØFD |
|------------------|--------------|---------------|----------------|----------------------|-----------------|---------------------|
| QPET2.5A06032F08 | 32 | .2500 (6.35) | 1.006 (25.55) | .982 (24.95) | .630 (16) | 1.220 (31) |
| QPET2.5A06032F10 | | .3125 (7.938) | | | | |
| QPET2.5A06034F08 | 34 | .2500 (6.35) | 1.069 (27.15) | 1.045 (26.55) | .709 (18) | 1.378 (35) |
| QPET2.5A06034F10 | | .3125 (7.938) | | | | |
| QPET2.5A06035F08 | 35 | .2500 (6.35) | 1.100 (27.95) | 1.077 (27.35) | .709 (18) | 1.378 (35) |
| QPET2.5A06035F10 | | .3125 (7.938) | | | | |
| QPET2.5A06036F08 | 36 | .2500 (6.35) | 1.130 (28.7) | 1.106 (28.1) | .787 (20) | 1.496 (38) |
| QPET2.5A06036F10 | | .3125 (7.938) | | | | |
| QPET2.5A06038F08 | 38 | .2500 (6.35) | 1.193 (30.3) | 1.169 (29.7) | .787 (20) | 1.496 (38) |
| QPET2.5A06038F10 | | .3125 (7.938) | | | | |
| QPET2.5A06040F08 | 40 | .2500 (6.35) | 1.256 (31.9) | 1.232 (31.3) | .866 (22) | 1.496 (38) |
| QPET2.5A06040F10 | | .3125 (7.938) | | | | |

Bore Tolerance: +.0015 (+0.038)
+.0005 (+0.012)

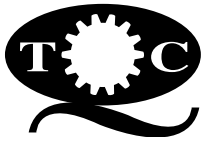
Larger number of teeth on the next page

O.D. Tolerance: 32 teeth +.002 (+0.05)
-.000 (0)
34 to 40 teeth +.003 (+0.08)
-.000 (0)

NOTE: T2.5 Profile Per DIN 7721-2 Rev 6/89.

T2.5 TIMING BELT PULLEYS

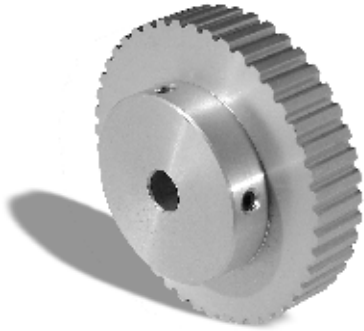




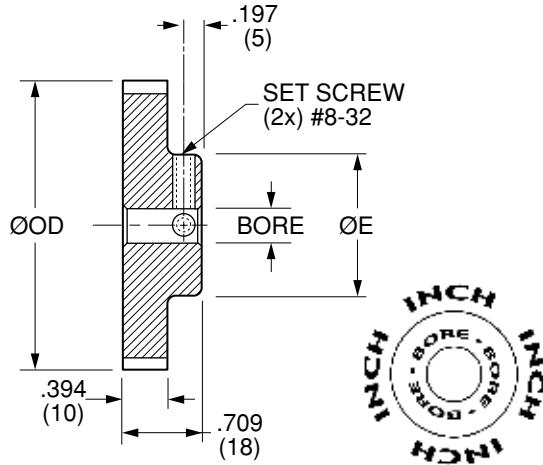
Quality
Transmission
Components

T2.5 Timing Belt Pulleys

**METRIC Pitch 2.5 mm T2.5 (.0984")
FOR BELTS UP TO .236" OR 6 mm WIDE**



MATERIAL: 2024-T4 or 2024-T351
Aluminum Alloy
FINISH: Clear Anodize



NOTE: Dimensions in () are in mm.

| Catalog Number | No. of Teeth | Bore | Pitch Diameter | Outside Diameter ØOD | Hub Diameter ØE |
|------------------|--------------|---------------|----------------|----------------------|-----------------|
| QPET2.5A06042N08 | 42 | .2500 (6.35) | 1.319 (33.5) | 1.295 (32.9) | .866 (22) |
| QPET2.5A06042N10 | | .3125 (7.938) | | | |
| QPET2.5A06044N08 | 44 | .2500 (6.35) | 1.382 (35.1) | 1.358 (34.5) | .945 (24) |
| QPET2.5A06044N10 | | .3125 (7.938) | | | |
| QPET2.5A06045N08 | 45 | .2500 (6.35) | 1.413 (35.9) | 1.390 (35.3) | .945 (24) |
| QPET2.5A06045N10 | | .3125 (7.938) | | | |
| QPET2.5A06048N08 | 48 | .2500 (6.35) | 1.508 (38.3) | 1.484 (37.7) | 1.024 (26) |
| QPET2.5A06048N10 | | .3125 (7.938) | | | |
| QPET2.5A06050N08 | 50 | .2500 (6.35) | 1.569 (39.85) | 1.545 (39.25) | 1.024 (26) |
| QPET2.5A06050N10 | | .3125 (7.938) | | | |
| QPET2.5A06060N08 | 60 | .2500 (6.35) | 1.884 (47.85) | 1.860 (47.25) | 1.339 (34) |
| QPET2.5A06060N10 | | .3125 (7.938) | | | |
| QPET2.5A06065N08 | 65 | .2500 (6.35) | 2.039 (51.8) | 2.016 (51.2) | 1.417 (36) |
| QPET2.5A06065N10 | | .3125 (7.938) | | | |
| QPET2.5A06070N08 | 70 | .2500 (6.35) | 2.197 (55.8) | 2.173 (55.2) | 1.496 (38) |
| QPET2.5A06070N10 | | .3125 (7.938) | | | |
| QPET2.5A06072N08 | 72 | .2500 (6.35) | 2.260 (57.4) | 2.236 (56.8) | 1.496 (38) |
| QPET2.5A06072N10 | | .3125 (7.938) | | | |
| QPET2.5A06090N08 | 90 | .2500 (6.35) | 2.823 (71.7) | 2.799 (71.1) | 1.575 (40) |
| QPET2.5A06090N10 | | .3125 (7.938) | | | |
| QPET2.5A06100N08 | 100 | .2500 (6.35) | 3.136 (79.65) | 3.112 (79.05) | 1.575 (40) |
| QPET2.5A06100N10 | | .3125 (7.938) | | | |

Bore Tolerance: $+.0015 \begin{pmatrix} +0.038 \\ +0.0005 \end{pmatrix} \begin{pmatrix} +0.012 \\ +0.012 \end{pmatrix}$

O.D. Tolerance: 42 to 60 teeth $+.003 \begin{pmatrix} +0.08 \\ -0.000 \end{pmatrix} \begin{pmatrix} 0 \\ 0 \end{pmatrix}$
65 to 100 teeth $+.004 \begin{pmatrix} +0.10 \\ -0.000 \end{pmatrix} \begin{pmatrix} 0 \\ 0 \end{pmatrix}$

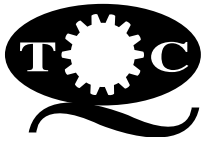
NOTE: T2.5 Profile Per DIN 7721-2 Rev 6/89.

www.econobelt.com



Quality Transmission Components

125 Railroad Avenue, Garden City Park, NY 11040-5016
Phone: (516) 437-6700 • Fax: (516) 328-3343
e-mail: support@econobelt.com



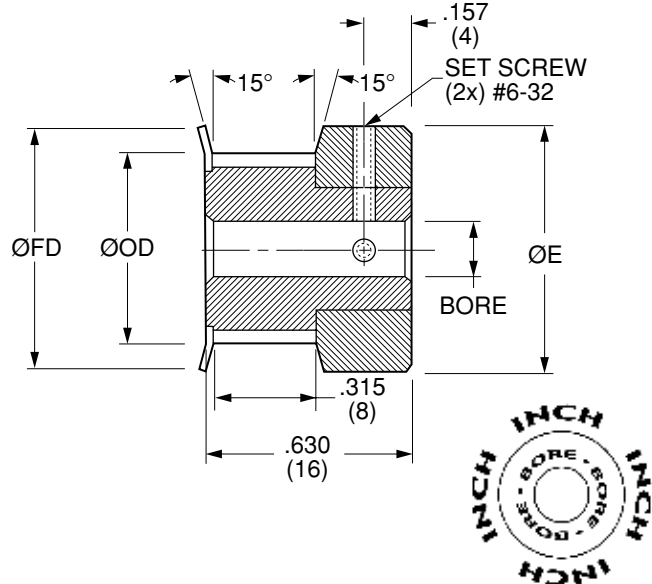
Quality
Transmission
Components

T2.5 Timing Belt Pulleys

METRIC Pitch 2.5 mm T2.5 (.0984")
FOR BELTS UP TO .236" OR 6 mm WIDE



MATERIAL: AISI 1045 Steel
FINISH: Black Oxide



T2.5 TIMING BELT PULLEYS

NOTE: Dimensions in () are in mm.

| Catalog Number | No. of Teeth | Bore | Pitch Diameter | Outside Diameter ØOD | Hub Diameter ØE | Flange Diameter ØFD |
|------------------|--------------|---------------|----------------|----------------------|-----------------|---------------------|
| QPET2.5S06010F04 | 10 | .1250 (3.175) | .317 (8.05) | .293 (7.45) | .433 (11) | .433 (11) |
| QPET2.5S06010F06 | | .1875 (4.763) | | | | |
| QPET2.5S06012F04 | 12 | .1250 (3.175) | .378 (9.6) | .354 (9) | .512 (13) | .551 (14) |
| QPET2.5S06012F06 | | .1875 (4.763) | | | | |
| QPET2.5S06013F04 | 13 | .1250 (3.175) | .409 (10.4) | .386 (9.8) | .551 (14) | .551 (14) |
| QPET2.5S06013F06 | | .1875 (4.763) | | | | |
| QPET2.5S06014F04 | 14 | .1250 (3.175) | .441 (11.2) | .417 (10.6) | .591 (15) | .591 (15) |
| QPET2.5S06014F06 | | .1875 (4.763) | | | | |
| QPET2.5S06015F04 | 15 | .1250 (3.175) | .472 (12) | .449 (11.4) | .591 (15) | .591 (15) |
| QPET2.5S06015F06 | | .1875 (4.763) | | | | |
| QPET2.5S06016F04 | 16 | .1250 (3.175) | .504 (12.8) | .480 (12.2) | .591 (15) | .591 (15) |
| QPET2.5S06016F06 | | .1875 (4.763) | | | | |

Bore Tolerance: $+0.0015$ ($+0.038$)
 $+0.0005$ ($+0.012$)

Larger number of teeth on the next page

O.D. Tolerance: 10 to 16 teeth $+0.002$ ($+0.05$)
 -0.000 (0)

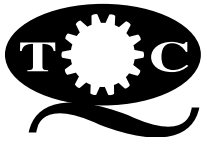
NOTE: T2.5 Profile Per DIN 7721-2 Rev 6/89.

www.econobelt.com



Quality Transmission Components

125 Railroad Avenue, Garden City Park, NY 11040-5016
Phone: (516) 437-6700 • Fax: (516) 328-3343
e-mail: support@econobelt.com



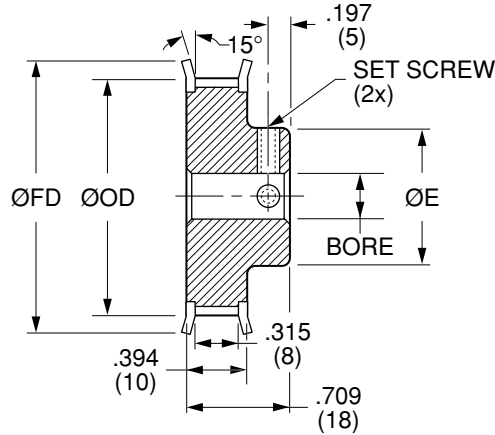
Quality
Transmission
Components

T2.5 Timing Belt Pulleys

**METRIC Pitch 2.5 mm T2.5 (.0984")
FOR BELTS UP TO .236" OR 6 mm WIDE**



MATERIAL: AISI 1045 Steel
FINISH: Black Oxide



NOTE: Dimensions in () are in mm.

| Catalog Number | No. of Teeth | Bore | Pitch Diameter | Outside Diameter ØOD | Hub Diameter ØE | Flange Diameter ØFD | Set Screw |
|------------------|--------------|---------------|----------------|----------------------|-----------------|---------------------|----------------|
| QPET2.5S06017F04 | 17 | .1250 (3.175) | .535 (13.6) | .512 (13) | .374 (9.5) | .709 (18) | #6-32 |
| QPET2.5S06017F06 | | .1875 (4.763) | | | | | |
| QPET2.5S06018F06 | 18 | .1875 (4.763) | .567 (14.4) | .543 (13.8) | .374 (9.5) | .709 (18) | #6-32 #8-32 |
| QPET2.5S06018F08 | | .2500 (6.35) | | | | | |
| QPET2.5S06019F06 | 19 | .1875 (4.763) | .598 (15.2) | .575 (14.6) | .394 (10) | .709 (18) | #6-32 #8-32 |
| QPET2.5S06019F08 | | .2500 (6.35) | | | | | |
| QPET2.5S06020F06 | 20 | .1875 (4.763) | .630 (16) | .606 (15.4) | .433 (11) | .768 (19.5) | #6-32 #8-32 |
| QPET2.5S06020F08 | | .2500 (6.35) | | | | | |
| QPET2.5S06021F06 | 21 | .1875 (4.763) | .661 (16.8) | .638 (16.2) | .433 (11) | .906 (23) | #6-32 #8-32 |
| QPET2.5S06021F08 | | .2500 (6.35) | | | | | |
| QPET2.5S06022F06 | 22 | .1875 (4.763) | .693 (17.6) | .669 (17) | .472 (12) | .906 (23) | #6-32 #8-32 |
| QPET2.5S06022F08 | | .2500 (6.35) | | | | | |
| QPET2.5S06024F08 | 24 | .2500 (6.35) | .754 (19.15) | .730 (18.55) | .472 (12) | .906 (23) | #8-32 |
| QPET2.5S06024F10 | | .3125 (7.938) | | | | | |
| QPET2.5S06025F08 | 25 | .2500 (6.35) | .785 (19.95) | .762 (19.35) | .472 (12) | .906 (23) | |
| QPET2.5S06025F10 | | .3125 (7.938) | | | | | |
| QPET2.5S06026F08 | 26 | .2500 (6.35) | .817 (20.75) | .793 (20.15) | .512 (13) | .984 (25) | |
| QPET2.5S06026F10 | | .3125 (7.938) | | | | | |
| QPET2.5S06027F08 | 27 | .2500 (6.35) | .848 (21.55) | .825 (20.95) | .551 (14) | 1.102 (28) | |
| QPET2.5S06027F10 | | .3125 (7.938) | | | | | |
| QPET2.5S06028F08 | 28 | .2500 (6.35) | .880 (22.35) | .856 (21.75) | .591 (15) | 1.102 (28) | |
| QPET2.5S06028F10 | | .3125 (7.938) | | | | | |
| QPET2.5S06029F08 | 29 | .2500 (6.35) | .911 (23.15) | .888 (22.55) | .591 (15) | 1.102 (28) | |
| QPET2.5S06029F10 | | .3125 (7.938) | | | | | |
| QPET2.5S06030F08 | 30 | .2500 (6.35) | .943 (23.95) | .919 (23.35) | .630 (16) | 1.102 (28) | |
| QPET2.5S06030F10 | | .3125 (7.938) | | | | | |

Bore Tolerance: +.0015 (+0.038)
+.0005 (+0.012)

Larger number of teeth on the next page

O.D. Tolerance: 17 to 30 teeth +.002 (+0.05)
-.000 (0)

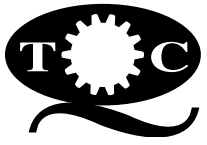
NOTE: T2.5 Profile Per DIN 7721-2 Rev 6/89.

www.econobelt.com



Quality Transmission Components

125 Railroad Avenue, Garden City Park, NY 11040-5016
Phone: (516) 437-6700 • Fax: (516) 328-3343
e-mail: support@econobelt.com



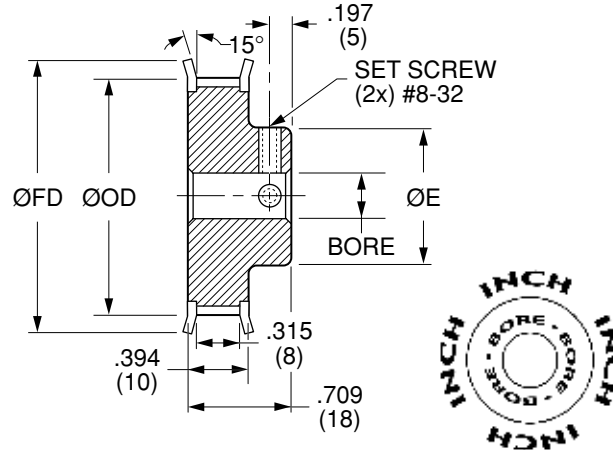
Quality
Transmission
Components

T2.5 Timing Belt Pulleys

**METRIC Pitch 2.5 mm T2.5 (.0984")
FOR BELTS UP TO .236" OR 6 mm WIDE**



MATERIAL: AISI 1045 Steel
FINISH: Black Oxide



NOTE: Dimensions in () are in mm.

| Catalog Number | No. of Teeth | Bore | Pitch Diameter | Outside Diameter ØOD | Hub Diameter ØE | Flange Diameter ØFD |
|------------------|--------------|---------------|----------------|----------------------|-----------------|---------------------|
| QPET2.5S06032F08 | 32 | .2500 (6.35) | 1.006 (25.55) | .982 (24.95) | .630 (16) | 1.220 (31) |
| QPET2.5S06032F10 | | .3125 (7.938) | | | | |
| QPET2.5S06034F08 | 34 | .2500 (6.35) | 1.069 (27.15) | 1.045 (26.55) | .709 (18) | 1.378 (35) |
| QPET2.5S06034F10 | | .3125 (7.938) | | | | |
| QPET2.5S06035F08 | 35 | .2500 (6.35) | 1.100 (27.95) | 1.077 (27.35) | .709 (18) | 1.378 (35) |
| QPET2.5S06035F10 | | .3125 (7.938) | | | | |
| QPET2.5S06036F08 | 36 | .2500 (6.35) | 1.130 (28.7) | 1.106 (28.1) | .787 (20) | 1.496 (38) |
| QPET2.5S06036F10 | | .3125 (7.938) | | | | |
| QPET2.5S06038F08 | 38 | .2500 (6.35) | 1.193 (30.3) | 1.169 (29.7) | .787 (20) | 1.496 (38) |
| QPET2.5S06038F10 | | .3125 (7.938) | | | | |
| QPET2.5S06040F08 | 40 | .2500 (6.35) | 1.256 (31.9) | 1.232 (31.3) | .866 (22) | 1.496 (38) |
| QPET2.5S06040F10 | | .3125 (7.938) | | | | |

Bore Tolerance: +.0015 (+0.038)
+.0005 (+0.012)

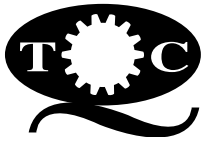
Larger number of teeth on the next page

O.D. Tolerance: 32 teeth +.002 (+0.05)
-.000 (0)
34 to 40 teeth +.003 (+0.08)
-.000 (0)

NOTE: T2.5 Profile Per DIN 7721-2 Rev 6/89.

T2.5 TIMING BELT PULLEYS

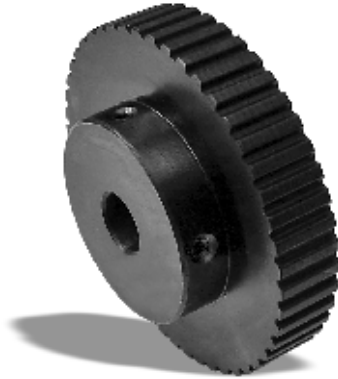




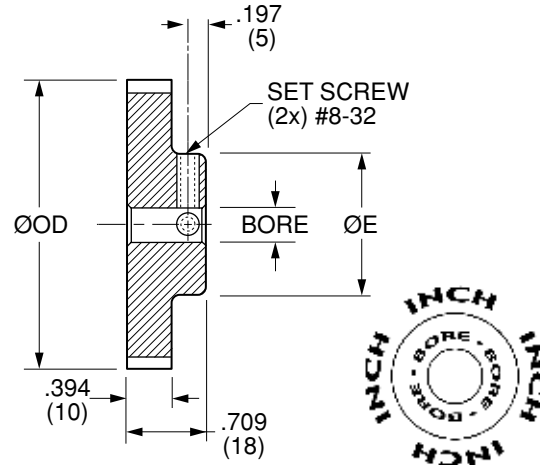
Quality
Transmission
Components

T2.5 Timing Belt Pulleys

METRIC Pitch 2.5 mm T2.5 (.0984")
FOR BELTS UP TO .236" OR 6 mm WIDE



MATERIAL: AISI 1045 Steel
FINISH: Black Oxide



NOTE: Dimensions in () are in mm.

T2.5 TIMING BELT PULLEYS

| Catalog Number | No. of Teeth | Bore | Pitch Diameter | Outside Diameter ØOD | Hub Diameter ØE |
|------------------|--------------|---------------|----------------|----------------------|-----------------|
| QPET2.5S06042N08 | 42 | .2500 (6.35) | 1.319 (33.5) | 1.295 (32.9) | .866 (22) |
| QPET2.5S06042N10 | | .3125 (7.938) | | | |
| QPET2.5S06044N08 | 44 | .2500 (6.35) | 1.382 (35.1) | 1.358 (34.5) | .945 (24) |
| QPET2.5S06044N10 | | .3125 (7.938) | | | |
| QPET2.5S06045N08 | 45 | .2500 (6.35) | 1.413 (35.9) | 1.390 (35.3) | .945 (24) |
| QPET2.5S06045N10 | | .3125 (7.938) | | | |
| QPET2.5S06048N08 | 48 | .2500 (6.35) | 1.508 (38.3) | 1.484 (37.7) | 1.024 (26) |
| QPET2.5S06048N10 | | .3125 (7.938) | | | |
| QPET2.5S06050N08 | 50 | .2500 (6.35) | 1.569 (39.85) | 1.545 (39.25) | 1.024 (26) |
| QPET2.5S06050N10 | | .3125 (7.938) | | | |
| QPET2.5S06060N08 | 60 | .2500 (6.35) | 1.884 (47.85) | 1.860 (47.25) | 1.339 (34) |
| QPET2.5S06060N10 | | .3125 (7.938) | | | |
| QPET2.5S06065N08 | 65 | .2500 (6.35) | 2.039 (51.8) | 2.016 (51.2) | 1.417 (36) |
| QPET2.5S06065N10 | | .3125 (7.938) | | | |
| QPET2.5S06070N08 | 70 | .2500 (6.35) | 2.197 (55.8) | 2.173 (55.2) | 1.496 (38) |
| QPET2.5S06070N10 | | .3125 (7.938) | | | |
| QPET2.5S06072N08 | 72 | .2500 (6.35) | 2.260 (57.4) | 2.236 (56.8) | 1.496 (38) |
| QPET2.5S06072N10 | | .3125 (7.938) | | | |
| QPET2.5S06090N08 | 90 | .2500 (6.35) | 2.823 (71.7) | 2.799 (71.1) | 1.575 (40) |
| QPET2.5S06090N10 | | .3125 (7.938) | | | |
| QPET2.5S06100N08 | 100 | .2500 (6.35) | 3.136 (79.65) | 3.112 (79.05) | 1.575 (40) |
| QPET2.5S06100N10 | | .3125 (7.938) | | | |

Bore Tolerance: +.0015 (+0.038)
+.0005 (+0.012)

O.D. Tolerance: 42 to 60 teeth +.003 (+0.08)
-.000 (0)
65 to 100 teeth +.004 (+0.10)
-.000 (0)

NOTE: T2.5 Profile Per DIN 7721-2 Rev 6/89.

www.econobelt.com



Quality Transmission Components

125 Railroad Avenue, Garden City Park, NY 11040-5016
Phone: (516) 437-6700 • Fax: (516) 328-3343
e-mail: support@econobelt.com