

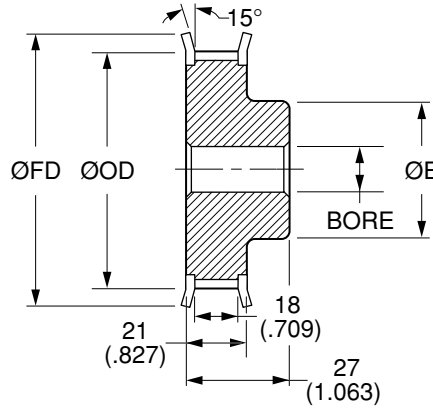


# T5 Timing Belt Pulleys

**METRIC Pitch 5 mm T5 (.1969")  
FOR BELTS UP TO 16 mm OR .630" WIDE**



**MATERIAL:** 2024-T4 or 2024-T351  
Aluminum Alloy  
**FINISH:** Clear Anodize



**NOTE:** Dimensions in ( ) are in inches.

Catalog Number	No. of Teeth	Bore F8	Pitch Diameter	Outside Diameter ØOD	Hub Diameter ØE	Flange Diameter ØFD
QPMT5A16010F06	10	6 (.2362)	16.05 (.632)	15.05 (.593)	11 (.433)	19.5 (.768)
QPMT5A16011F06	11		17.65 (.695)	16.65 (.656)		21 (.827)
QPMT5A16012F06	12		19.25 (.758)	18.25 (.719)		23 (.906)
QPMT5A16013F06	13		20.85 (.821)	19.85 (.781)	14 (.551)	25 (.984)
QPMT5A16014F06	14		22.45 (.884)	21.45 (.844)	14 (.551)	25 (.984)
QPMT5A16015F06	15		24.05 (.947)	23.05 (.907)	16 (.630)	28 (1.102)
QPMT5A16016F06	16		25.6 (1.008)	24.6 (.969)	18 (.709)	32 (1.260)
QPMT5A16017F06	17		27.2 (1.071)	26.2 (1.031)	18 (.709)	
QPMT5A16018F06	18		28.8 (1.134)	27.8 (1.094)	19 (.748)	
QPMT5A16019F06	19		30.4 (1.197)	29.4 (1.157)	22 (.866)	37 (1.457)
QPMT5A16020F06	20		32 (1.260)	31 (1.220)	23 (.906)	37 (1.457)
QPMT5A16021F06	21		33.65 (1.325)	32.65 (1.285)	24 (.945)	38 (1.496)
QPMT5A16022F06	22		35.25 (1.388)	34.25 (1.348)	24 (.945)	38 (1.496)
QPMT5A16023F06	23		36.8 (1.449)	35.8 (1.409)	26 (1.024)	41 (1.614)
QPMT5A16024F06	24		38.4 (1.512)	37.4 (1.472)	26 (1.024)	43 (1.693)
QPMT5A16025F06	25		39.95 (1.573)	38.95 (1.533)	26 (1.024)	44 (1.732)
QPMT5A16026F06	26		41.6 (1.638)	40.6 (1.598)	26 (1.024)	44 (1.732)
QPMT5A16027F06	27		43.2 (1.701)	42.2 (1.661)	30 (1.181)	48 (1.890)

**Bore Tolerance (F8):** 6 mm +0.028 (+.0011)  
+0.010 (+.0004)

Larger number of teeth on the next page

**O.D. Tolerance:** 10 to 16 teeth +0.05 (+.002)  
0 (-.000)  
17 to 27 teeth +0.08 (+.003)  
0 (-.000)

**NOTE:** T5 Profile Per DIN 7721-2 Rev 6/89.

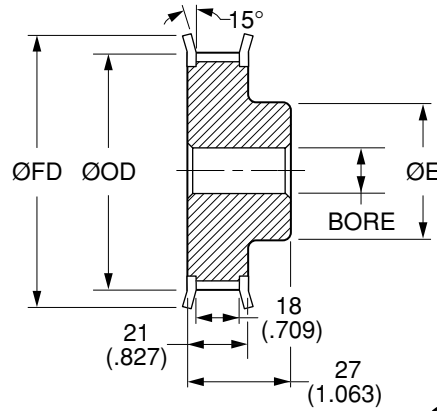




Quality  
Transmission  
Components

# T5 Timing Belt Pulleys

**METRIC Pitch 5 mm T5 (.1969")  
FOR BELTS UP TO 16 mm OR .630" WIDE**



**MATERIAL:** 2024-T4 or 2024-T351  
Aluminum Alloy  
**FINISH:** Clear Anodize



**NOTE:** Dimensions in ( ) are in inches.

Catalog Number	No. of Teeth	Bore F8	Pitch Diameter	Outside Diameter ØOD	Hub Diameter ØE	Flange Diameter ØFD
QPMT5A16028F08	28	8 (.3150)	44.75 (1.762)	43.75 (1.722)	32 (1.260)	48 (1.890)
QPMT5A16029F08	29		46.35 (1.825)	45.35 (1.785)	34 (1.339)	51 (2.008)
QPMT5A16030F08	30		47.9 (1.886)	46.9 (1.846)	34 (1.339)	52 (2.047)
QPMT5A16032F08	32		51.1 (2.012)	50.1 (1.972)	38 (1.496)	54 (2.126)
QPMT5A16034F08	34		54.3 (2.138)	53.3 (2.098)	38 (1.496)	61 (2.402)
QPMT5A16035F08	35		55.9 (2.201)	54.9 (2.161)	38 (1.496)	61 (2.402)
QPMT5A16036F08	36		57.45 (2.262)	56.45 (2.222)	38 (1.496)	61 (2.402)
QPMT5A16037F08	37		59.05 (2.325)	58.05 (2.285)	40 (1.575)	67 (2.638)
QPMT5A16038F08	38		60.65 (2.388)	59.65 (2.348)	40 (1.575)	67 (2.638)
QPMT5A16040F08	40		63.85 (2.514)	62.85 (2.474)		67 (2.638)
QPMT5A16042F08	42		67.05 (2.640)	66.05 (2.600)	70 (2.756)	

**Bore Tolerance (F8):** 8 mm  $+0.035 \begin{pmatrix} +.0014 \\ +0.013 \end{pmatrix} \begin{pmatrix} +.0014 \\ +.0005 \end{pmatrix}$

Larger number of teeth on the next page

**O.D. Tolerance:** 28 to 30 teeth  $+0.08 \begin{pmatrix} +.003 \\ 0 \end{pmatrix} \begin{pmatrix} +.003 \\ -.000 \end{pmatrix}$   
32 to 42 teeth  $+0.10 \begin{pmatrix} +.004 \\ 0 \end{pmatrix} \begin{pmatrix} +.004 \\ -.000 \end{pmatrix}$

**NOTE:** T5 Profile Per DIN 7721-2 Rev 6/89.

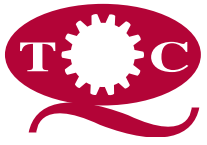
T5 TIMING BELT PULLEYS

[www.econobelt.com](http://www.econobelt.com)



Quality Transmission Components

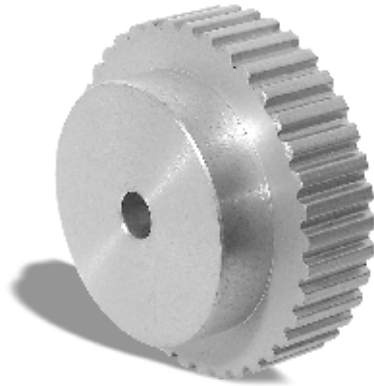
125 Railroad Avenue, Garden City Park, NY 11040-5016  
Phone: (516) 437-6700 • Fax: (516) 328-3343  
e-mail: support@econobelt.com



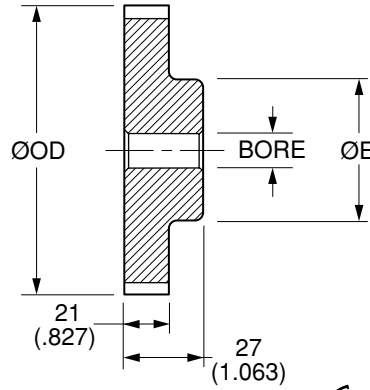
Quality  
Transmission  
Components

# T5 Timing Belt Pulleys

**METRIC Pitch 5 mm T5 (.1969")  
FOR BELTS UP TO 16 mm OR .630" WIDE**



**MATERIAL:** 2024-T4 or 2024-T351  
Aluminum Alloy  
**FINISH:** Clear Anodize



**NOTE:** Dimensions in ( ) are in inches.

Catalog Number	No. of Teeth	Bore F8	Pitch Diameter	Outside Diameter ØOD	Hub Diameter ØE
QPMT5A16044N08	44	8 (.3150)	70.2 (2.764)	69.2 (2.724)	45 (1.772)
QPMT5A16045N08	45		71.8 (2.827)	70.8 (2.787)	
QPMT5A16046N08	46		73.4 (2.890)	72.4 (2.850)	50 (1.969)
QPMT5A16048N08	48		76.55 (3.014)	75.55 (2.974)	
QPMT5A16050N08	50		79.7 (3.138)	78.7 (3.098)	65 (2.559)
QPMT5A16060N08	60		95.65 (3.766)	94.65 (3.726)	
QPMT5A16072N08	72		114.75 (4.518)	113.75 (4.478)	70 (2.756)
QPMT5A16080N08	80		127.45 (5.018)	126.45 (4.978)	
QPMT5A16090N08	90		143.45 (5.648)	142.45 (5.608)	70 (2.756)
QPMT5A16100N08	100		159.4 (6.276)	158.4 (6.236)	

**Bore Tolerance (F8):** 8 mm +0.035 (+.0014)  
+0.013 (+.0005)

**O.D. Tolerance:** 44 to 60 teeth +0.10 (+.004)  
0 (-.000)  
72 to 100 teeth +0.13 (+.005)  
0 (-.000)

**NOTE:** T5 Profile Per DIN 7721-2 Rev 6/89.

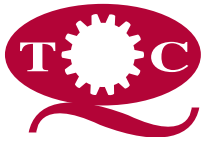
T5 TIMING BELT PULLEYS

[www.econobelt.com](http://www.econobelt.com)



Quality Transmission Components

125 Railroad Avenue, Garden City Park, NY 11040-5016  
Phone: (516) 437-6700 • Fax: (516) 328-3343  
e-mail: support@econobelt.com

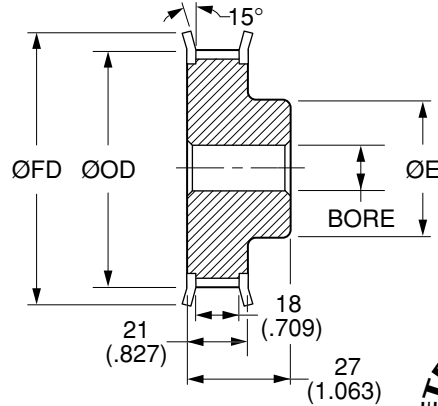


# T5 Timing Belt Pulleys

**METRIC Pitch 5 mm T5 (.1969")  
FOR BELTS UP TO 16 mm OR .630" WIDE**



**MATERIAL:** AISI 1045 Steel  
**FINISH:** Black Oxide



**NOTE:** Dimensions in ( ) are in inches.

Catalog Number	No. of Teeth	Bore F8	Pitch Diameter	Outside Diameter ØOD	Hub Diameter ØE	Flange Diameter ØFD	
QPMT5S16010F06	10	6 (.2362)	16.05 (.632)	15.05 (.593)	11 (.433)	19.5 (.768)	
QPMT5S16011F06	11		17.65 (.695)	16.65 (.656)		21 (.827)	
QPMT5S16012F06	12		19.25 (.758)	18.25 (.719)		23 (.906)	
QPMT5S16013F06	13		20.85 (.821)	19.85 (.781)	14 (.551)	25 (.984)	
QPMT5S16014F06	14		22.45 (.884)	21.45 (.844)		25 (.984)	
QPMT5S16015F06	15		24.05 (.947)	23.05 (.907)		28 (1.102)	
QPMT5S16016F06	16		18 (.709)	25.6 (1.008)	24.6 (.969)	32 (1.260)	
QPMT5S16017F06	17			27.2 (1.071)	26.2 (1.031)		
QPMT5S16018F06	18			28.8 (1.134)	27.8 (1.094)		
QPMT5S16019F06	19		22 (.866)	30.4 (1.197)	29.4 (1.157)	37 (1.457)	
QPMT5S16020F06	20			32 (1.260)	31 (1.220)		
QPMT5S16021F06	21			33.65 (1.325)	32.65 (1.285)		
QPMT5S16022F06	22		24 (.945)	35.25 (1.388)	34.25 (1.348)	38 (1.496)	
QPMT5S16023F06	23			36.8 (1.449)	35.8 (1.409)		
QPMT5S16024F06	24			38.4 (1.512)	37.4 (1.472)		
QPMT5S16025F06	25		26 (1.024)	39.95 (1.573)	38.95 (1.533)	44 (1.732)	
QPMT5S16026F06	26			41.6 (1.638)	40.6 (1.598)		
QPMT5S16027F06	27			43.2 (1.701)	42.2 (1.661)		

**Bore Tolerance (F8):** 6 mm +0.028 (+.0011)  
+0.010 (+.0004)

Larger number of teeth on the next page

**O.D. Tolerance:** 10 to 16 teeth +0.05 (+.002)  
0 (-.000)  
17 to 27 teeth +0.08 (+.003)  
0 (-.000)

**NOTE:** T5 Profile Per DIN 7721-2 Rev 6/89.

T5 TIMING BELT PULLEYS





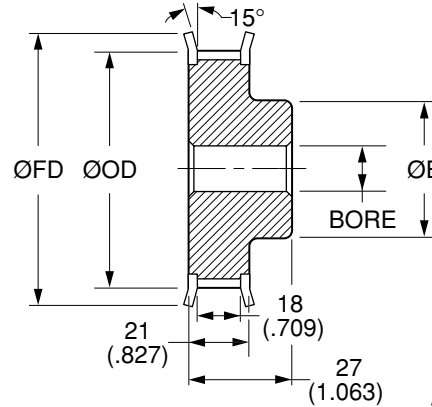
Quality  
Transmission  
Components

# T5 Timing Belt Pulleys

**METRIC Pitch 5 mm T5 (.1969")  
FOR BELTS UP TO 16 mm OR .630" WIDE**



**MATERIAL:** AISI 1045 Steel  
**FINISH:** Black Oxide



**NOTE:** Dimensions in ( ) are in inches.

Catalog Number	No. of Teeth	Bore F8	Pitch Diameter	Outside Diameter ØOD	Hub Diameter ØE	Flange Diameter ØFD
QPMT5S16028F08	28	8 (.3150)	44.75 (1.762)	43.75 (1.722)	32 (1.260)	48 (1.890)
QPMT5S16029F08	29		46.35 (1.825)	45.35 (1.785)	34 (1.339)	51 (2.008)
QPMT5S16030F08	30		47.9 (1.886)	46.9 (1.846)	34 (1.339)	52 (2.047)
QPMT5S16032F08	32		51.1 (2.012)	50.1 (1.972)	38 (1.496)	54 (2.126)
QPMT5S16034F08	34		54.3 (2.138)	53.3 (2.098)	38 (1.496)	61 (2.402)
QPMT5S16035F08	35		55.9 (2.201)	54.9 (2.161)	38 (1.496)	61 (2.402)
QPMT5S16036F08	36		57.45 (2.262)	56.45 (2.222)	38 (1.496)	61 (2.402)
QPMT5S16037F08	37		59.05 (2.325)	58.05 (2.285)	40 (1.575)	67 (2.638)
QPMT5S16038F08	38		60.65 (2.388)	59.65 (2.348)	40 (1.575)	67 (2.638)
QPMT5S16040F08	40		63.85 (2.514)	62.85 (2.474)		67 (2.638)
QPMT5S16042F08	42		67.05 (2.640)	66.05 (2.600)		70 (2.756)

**Bore Tolerance (F8):** 8 mm +0.035 (+.0014)  
+0.013 (+.0005)

Larger number of teeth on the next page

**O.D. Tolerance:** 28 to 30 teeth +0.08 (+.003)  
0 (-.000)  
32 to 42 teeth +0.10 (+.004)  
0 (-.000)

**NOTE:** T5 Profile Per DIN 7721-2 Rev 6/89.

T5 TIMING BELT PULLEYS

www.econobelt.com



Quality Transmission Components

125 Railroad Avenue, Garden City Park, NY 11040-5016  
Phone: (516) 437-6700 • Fax: (516) 328-3343  
e-mail: support@econobelt.com



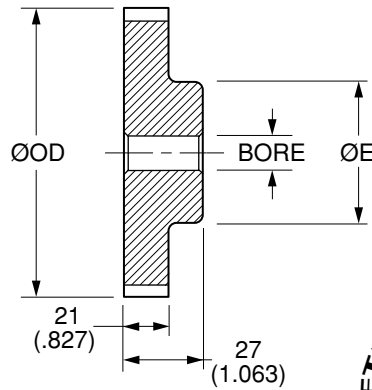
Quality  
Transmission  
Components

# T5 Timing Belt Pulleys

**METRIC Pitch 5 mm T5 (.1969")  
FOR BELTS UP TO 16 mm OR .630" WIDE**



**MATERIAL:** AISI 1045 Steel  
**FINISH:** Black Oxide



**NOTE:** Dimensions in ( ) are in inches.

Catalog Number	No. of Teeth	Bore F8	Pitch Diameter	Outside Diameter ØOD	Hub Diameter ØE
QPMT5S16044N08	44	8 (.3150)	70.2 (2.764)	69.2 (2.724)	45 (1.772)
QPMT5S16045N08	45		71.8 (2.827)	70.8 (2.787)	
QPMT5S16046N08	46		73.4 (2.890)	72.4 (2.850)	50 (1.969)
QPMT5S16048N08	48		76.55 (3.014)	75.55 (2.974)	
QPMT5S16050N08	50		79.7 (3.138)	78.7 (3.098)	65 (2.559)
QPMT5S16060N08	60		95.65 (3.766)	94.65 (3.726)	
QPMT5S16072N08	72		114.75 (4.518)	113.75 (4.478)	70 (2.756)
QPMT5S16080N08	80		127.45 (5.018)	126.45 (4.978)	
QPMT5S16090N08	90		143.45 (5.648)	142.45 (5.608)	70 (2.756)
QPMT5S16100N08	100		159.4 (6.276)	158.4 (6.236)	

**Bore Tolerance (F8):** 8 mm +0.035 (+.0014)  
+0.013 (+.0005)

**O.D. Tolerance:** 44 to 60 teeth +0.10 (+.004)  
0 (-.000)  
72 to 100 teeth +0.13 (+.005)  
0 (-.000)

**NOTE:** T5 Profile Per DIN 7721-2 Rev 6/89.

T5 TIMING BELT PULLEYS

www.econobelt.com



Quality Transmission Components

125 Railroad Avenue, Garden City Park, NY 11040-5016  
Phone: (516) 437-6700 • Fax: (516) 328-3343  
e-mail: support@econobelt.com