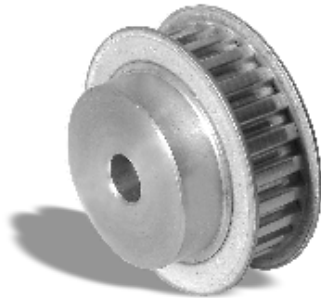


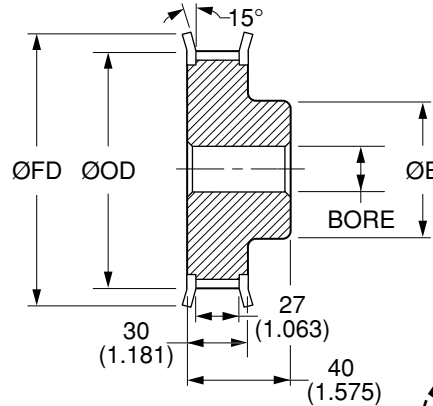


T10 Timing Belt Pulleys

**METRIC Pitch 10 mm T10 (.3937")
FOR BELTS UP TO 25 mm OR .984" WIDE**



MATERIAL: 2024-T4 or 2024-T351
Aluminum Alloy
FINISH: Clear Anodize



NOTE: Dimensions in () are in inches.

Catalog Number	No. of Teeth	Bore F8	Pitch Diameter	Outside Diameter ØOD	Hub Diameter ØE	Flange Diameter ØFD
QPMT10A25010F08	10	8 (.3150)	31.98 (1.259)	29.98 (1.180)	24 (.945)	40 (1.575)
QPMT10A25011F08	11		35.16 (1.384)	33.16 (1.306)	28 (1.102)	40 (1.575)
QPMT10A25012F08	12		38.35 (1.510)	36.35 (1.431)	28 (1.102)	43 (1.693)
QPMT10A25013F08	13		41.55 (1.636)	39.55 (1.557)	32 (1.260)	45 (1.772)
QPMT10A25014F08	14		44.7 (1.760)	42.7 (1.681)		48 (1.890)
QPMT10A25015F08	15		47.9 (1.886)	45.9 (1.807)		51 (2.008)
QPMT10A25016F08	16		51.1 (2.012)	49.1 (1.933)	35 (1.378)	54 (2.126)
QPMT10A25017F08	17		54.25 (2.136)	52.25 (2.057)	35 (1.378)	57 (2.244)
QPMT10A25018F08	18		57.45 (2.262)	55.45 (2.183)	40 (1.575)	60 (2.362)
QPMT10A25019F08	19		60.65 (2.388)	58.65 (2.309)	44 (1.732)	67 (2.638)
QPMT10A25020F08	20		63.8 (2.512)	61.8 (2.433)	46 (1.811)	67 (2.638)
QPMT10A25022F08	22		70.2 (2.764)	68.2 (2.685)	52 (2.047)	75 (2.953)
QPMT10A25023F08	23		73.4 (2.890)	71.4 (2.811)	52 (2.047)	80 (3.150)
QPMT10A25024F08	24		76.55 (3.014)	74.55 (2.935)	58 (2.283)	83 (3.268)
QPMT10A25025F08	25		79.75 (3.140)	77.75 (3.061)	60 (2.362)	83 (3.268)
QPMT10A25026F08	26		82.95 (3.266)	80.95 (3.187)	60 (2.362)	87 (3.425)
QPMT10A25027F08	27		86.1 (3.390)	84.1 (3.311)		91 (3.583)
QPMT10A25028F08	28		89.25 (3.514)	87.25 (3.435)		94 (3.701)
QPMT10A25030F08	30		95.65 (3.766)	93.65 (3.687)		97 (3.819)

Bore Tolerance (F8): 8 mm +0.035 (+.0014)
+0.013 (+.0005)

Larger number of teeth on the next page

O.D. Tolerance: 10 to 16 teeth +0.08 (+.003)
0 (-.000)
17 to 30 teeth +0.10 (+.004)
0 (-.000)

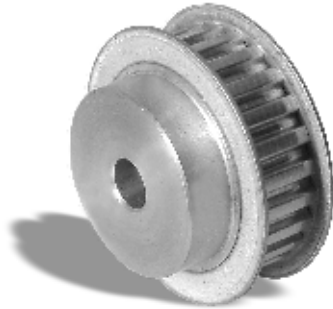
NOTE: T10 Profile Per DIN 7721-2 Rev 6/89.



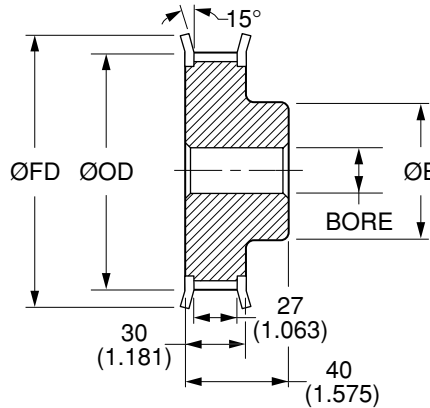


T10 Timing Belt Pulleys

**METRIC Pitch 10 mm T10 (.3937")
FOR BELTS UP TO 25 mm OR .984" WIDE**



MATERIAL: 2024-T4 or 2024-T351
Aluminum Alloy
FINISH: Clear Anodize



NOTE: Dimensions in () are in inches.

Catalog Number	No. of Teeth	Bore F8	Pitch Diameter	Outside Diameter ØOD	Hub Diameter ØE	Flange Diameter ØFD
QPMT10A25032F10	32	10 (.3937)	102 (4.016)	100 (3.937)	65 (2.559)	112 (4.409)
QPMT10A25034F10	34		108.4 (4.268)	106.4 (4.189)	65 (2.559)	115 (4.528)
QPMT10A25036F10	36		114.75 (4.518)	112.75 (4.439)	70 (2.756)	120 (4.724)
QPMT10A25038F10	38		121.1 (4.768)	119.1 (4.689)	70 (2.756)	125 (4.921)
QPMT10A25040F10	40		127.45 (5.018)	125.45 (4.939)	80 (3.150)	135 (5.315)

Bore Tolerance (F8): 10 mm +0.035 (+.0014)
+0.013 (+.0005)

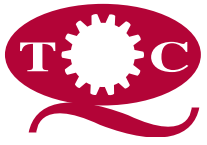
Larger number of teeth on the next page

O.D. Tolerance: 32 teeth +0.10 (+.004)
0 (-.000)
34 to 40 teeth +0.13 (+.005)
0 (-.000)

NOTE: T10 Profile Per DIN 7721-2 Rev 6/89.

T10 TIMING BELT PULLEYS

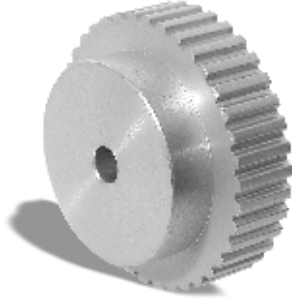




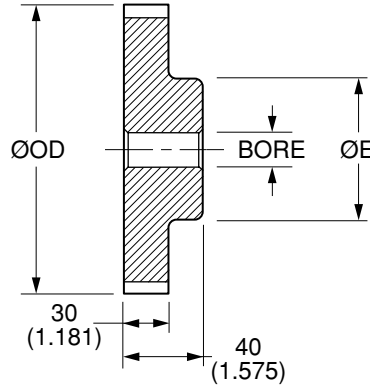
Quality
Transmission
Components

T10 Timing Belt Pulleys

**METRIC Pitch 10 mm T10 (.3937")
FOR BELTS UP TO 25 mm OR .984" WIDE**



MATERIAL: 2024-T4 or 2024-T351
Aluminum Alloy
FINISH: Clear Anodize



NOTE: Dimensions in () are in inches.

Catalog Number	No. of Teeth	Bore F8	Pitch Diameter	Outside Diameter ØOD	Hub Diameter ØE
QPMT10A25044N10	44	10 (.3937)	140.2 (5.520)	138.2 (5.441)	88 (3.465)
QPMT10A25045N16	45	16 (.6299)	143.4 (5.646)	141.4 (5.567)	88 (3.465)
QPMT10A25048N16	48	16 (.6299)	152.95 (6.022)	150.95 (5.943)	95 (3.740)
QPMT10A25060N16	60	16 (.6299)	191.15 (7.526)	189.15 (7.447)	110 (4.331)
QPMT10A25072N16	72	16 (.6299)	229.3 (9.028)	227.3 (8.949)	110 (4.331)

Bore Tolerance (F8): 10 mm $+0.035 \begin{pmatrix} +.0014 \\ +0.013 \end{pmatrix} \begin{pmatrix} +.0005 \end{pmatrix}$
16 mm $+0.043 \begin{pmatrix} +.0017 \\ +0.016 \end{pmatrix} \begin{pmatrix} +.0006 \end{pmatrix}$

O.D. Tolerance: 44 to 48 teeth $+0.13 \begin{pmatrix} +.005 \\ 0 \end{pmatrix} \begin{pmatrix} -.000 \end{pmatrix}$
60 & 72 teeth $+0.15 \begin{pmatrix} +.006 \\ 0 \end{pmatrix} \begin{pmatrix} -.000 \end{pmatrix}$

NOTE: T10 Profile Per DIN 7721-2 Rev 6/89.

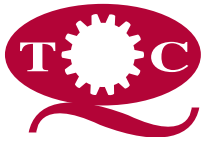
T10 TIMING BELT PULLEYS

www.econobelt.com



Quality Transmission Components

125 Railroad Avenue, Garden City Park, NY 11040-5016
Phone: (516) 437-6700 • Fax: (516) 328-3343
e-mail: support@econobelt.com

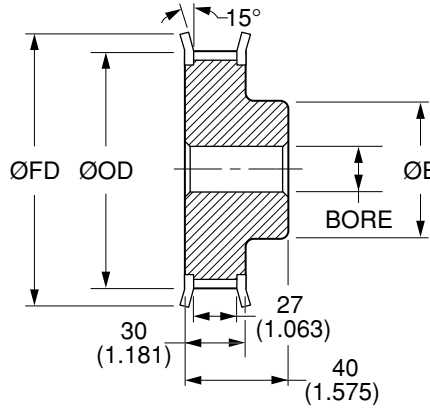


T10 Timing Belt Pulleys

**METRIC Pitch 10 mm T10 (.3937")
FOR BELTS UP TO 25 mm OR .984" WIDE**



MATERIAL: AISI 1045 Steel
FINISH: Black Oxide



NOTE: Dimensions in () are in inches.

Catalog Number	No. of Teeth	Bore F8	Pitch Diameter	Outside Diameter ØOD	Hub Diameter ØE	Flange Diameter ØFD
QPMT10S25010F08	10	8 (.3150)	31.98 (1.259)	29.98 (1.180)	24 (.945)	40 (1.575)
QPMT10S25011F08	11		35.16 (1.384)	33.16 (1.306)	28 (1.102)	40 (1.575)
QPMT10S25012F08	12		38.35 (1.510)	36.35 (1.431)	28 (1.102)	43 (1.693)
QPMT10S25013F08	13		41.55 (1.636)	39.55 (1.557)	32 (1.260)	45 (1.772)
QPMT10S25014F08	14		44.7 (1.760)	42.7 (1.681)		48 (1.890)
QPMT10S25015F08	15		47.9 (1.886)	45.9 (1.807)		51 (2.008)
QPMT10S25016F08	16		51.1 (2.012)	49.1 (1.933)	35 (1.378)	54 (2.126)
QPMT10S25017F08	17		54.25 (2.136)	52.25 (2.057)	35 (1.378)	57 (2.244)
QPMT10S25018F08	18		57.45 (2.262)	55.45 (2.183)	40 (1.575)	60 (2.362)
QPMT10S25019F08	19		60.65 (2.388)	58.65 (2.309)	44 (1.732)	67 (2.638)
QPMT10S25020F08	20		63.8 (2.512)	61.8 (2.433)	46 (1.811)	67 (2.638)
QPMT10S25022F08	22		70.2 (2.764)	68.2 (2.685)	52 (2.047)	75 (2.953)
QPMT10S25023F08	23		73.4 (2.890)	71.4 (2.811)	52 (2.047)	80 (3.150)
QPMT10S25024F08	24		76.55 (3.014)	74.55 (2.935)	58 (2.283)	83 (3.268)
QPMT10S25025F08	25		79.75 (3.140)	77.75 (3.061)	60 (2.362)	83 (3.268)
QPMT10S25026F08	26		82.95 (3.266)	80.95 (3.187)	60 (2.362)	87 (3.425)
QPMT10S25027F08	27		86.1 (3.390)	84.1 (3.311)		91 (3.583)
QPMT10S25028F08	28		89.25 (3.514)	87.25 (3.435)		94 (3.701)
QPMT10S25030F08	30		95.65 (3.766)	93.65 (3.687)		97 (3.819)

Bore Tolerance (F8): 8 mm +0.035 (+.0014)
+0.013 (+.0005)

Larger number of teeth on the next page

O.D. Tolerance: 10 to 16 teeth +0.08 (+.003)
0 (-.000)
17 to 30 teeth +0.10 (+.004)
0 (-.000)

NOTE: T10 Profile Per DIN 7721-2 Rev 6/89.





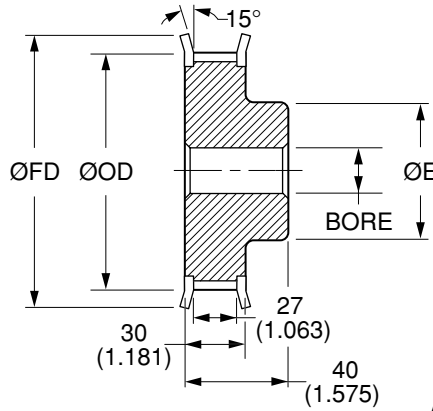
Quality
Transmission
Components

T10 Timing Belt Pulleys

**METRIC Pitch 10 mm T10 (.3937")
FOR BELTS UP TO 25 mm OR .984" WIDE**



MATERIAL: AISI 1045 Steel
FINISH: Black Oxide



NOTE: Dimensions in () are in inches.

Catalog Number	No. of Teeth	Bore F8	Pitch Diameter	Outside Diameter ØOD	Hub Diameter ØE	Flange Diameter ØFD
QPMT10S25032F10	32	10 (.3937)	102 (4.016)	100 (3.937)	65 (2.559)	112 (4.409)
QPMT10S25034F10	34		108.4 (4.268)	106.4 (4.189)	65 (2.559)	115 (4.528)
QPMT10S25036F10	36		114.75 (4.518)	112.75 (4.439)	70 (2.756)	120 (4.724)
QPMT10S25038F10	38		121.1 (4.768)	119.1 (4.689)	70 (2.756)	125 (4.921)
QPMT10S25040F10	40		124.45 (5.018)	125.45 (4.939)	80 (3.150)	135 (5.315)

Bore Tolerance (F8): 10 mm $+0.035 \begin{pmatrix} +.0014 \\ +0.013 \end{pmatrix} \begin{pmatrix} +.0005 \\ \end{pmatrix}$

Larger number of teeth on the next page

O.D. Tolerance: 32 teeth $+0.10 \begin{pmatrix} +.004 \\ 0 \end{pmatrix} \begin{pmatrix} -.000 \\ \end{pmatrix}$
34 to 40 teeth $+0.13 \begin{pmatrix} +.005 \\ 0 \end{pmatrix} \begin{pmatrix} -.000 \\ \end{pmatrix}$

NOTE: T10 Profile Per DIN 7721-2 Rev 6/89.

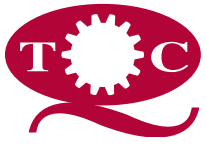
T10 TIMING BELT PULLEYS

www.econobelt.com



Quality Transmission Components

125 Railroad Avenue, Garden City Park, NY 11040-5016
Phone: (516) 437-6700 • Fax: (516) 328-3343
e-mail: support@econobelt.com



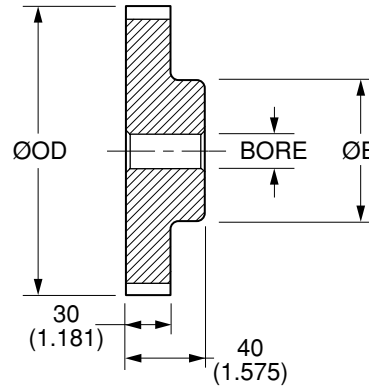
Quality
Transmission
Components

T10 Timing Belt Pulleys

**METRIC Pitch 10 mm T10 (.3937")
FOR BELTS UP TO 25 mm OR .984" WIDE**



MATERIAL: AISI 1045 Steel
FINISH: Black Oxide



NOTE: Dimensions in () are in inches.

Catalog Number	No. of Teeth	Bore F8	Pitch Diameter	Outside Diameter ØOD	Hub Diameter ØE
QPMT10S25044N10	44	10 (.3937)	140.2 (5.520)	138.2 (5.441)	88 (3.465)
QPMT10S25045N16	45	16 (.6299)	143.4 (5.646)	141.4 (5.567)	88 (3.465)
QPMT10S25048N16	48	16 (.6299)	152.95 (6.022)	150.95 (5.943)	95 (3.740)
QPMT10S25060N16	60	16 (.6299)	191.15 (7.526)	189.15 (7.447)	110 (4.331)
QPMT10S25072N16	72	16 (.6299)	229.3 (9.028)	227.3 (8.949)	110 (4.331)

Bore Tolerance (F8): 10 mm +0.035 (+.0014)
+0.013 (+.0005)
16 mm +0.043 (+.0017)
+0.016 (+.0006)

O.D. Tolerance: 44 to 48 teeth +0.13 (+.005)
0 (-.000)
60 & 72 teeth +0.15 (+.006)
0 (-.000)

NOTE: T10 Profile Per DIN 7721-2 Rev 6/89.

T10 TIMING BELT PULLEYS

www.econobelt.com



Quality Transmission Components

125 Railroad Avenue, Garden City Park, NY 11040-5016
Phone: (516) 437-6700 • Fax: (516) 328-3343
e-mail: support@econobelt.com