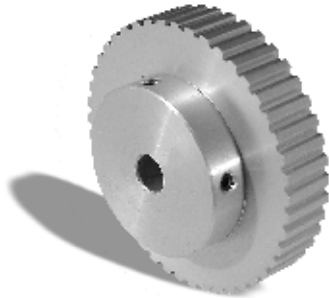


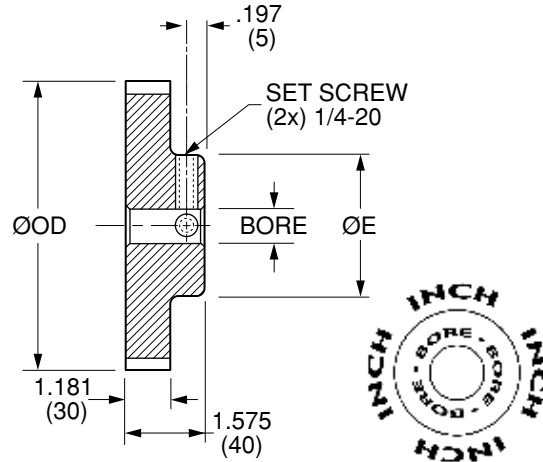
Quality
Transmission
Components

T10 Timing Belt Pulleys

**METRIC Pitch 10 mm T10 (.3937")
FOR BELTS UP TO .984" OR 25 mm WIDE**



MATERIAL: 2024-T4 or 2024-T351
Aluminum Alloy
FINISH: Clear Anodize



NOTE: Dimensions in () are in mm.

Catalog Number	No. of Teeth	Bore	Pitch Diameter	Outside Diameter ØOD	Hub Diameter ØE
QPET10A25044N16	44	.5000 (12.7)	5.520 (140.2)	5.441 (138.2)	3.465 (88)
QPET10A25044N20		.6250 (15.875)			
QPET10A25045N16	45	.5000 (12.7)	5.646 (143.4)	5.567 (141.4)	3.465 (88)
QPET10A25045N20		.6250 (15.875)			
QPET10A25048N16	48	.5000 (12.7)	6.022 (152.95)	5.943 (150.95)	3.740 (95)
QPET10A25048N20		.6250 (15.875)			
QPET10A25060N20	60	.6250 (15.875)	7.524 (191.1)	7.445 (189.1)	4.331 (110)
QPET10A25060N24		.7500 (19.05)			
QPET10A25072N20	72	.6250 (15.875)	9.027 (229.29)	8.948 (227.29)	4.331 (110)
QPET10A25072N24		.7500 (19.05)			

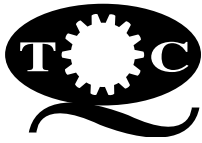
Bore Tolerance: .5000 $\begin{matrix} +.0015 \\ +.0005 \end{matrix} \begin{pmatrix} +0.038 \\ +0.012 \end{pmatrix}$
.6250 & .7500 $\begin{matrix} +.0020 \\ +.0005 \end{matrix} \begin{pmatrix} +0.051 \\ +0.012 \end{pmatrix}$

O.D. Tolerance: 44 to 48 teeth $\begin{matrix} +.005 \\ -.000 \end{matrix} \begin{pmatrix} +0.13 \\ 0 \end{pmatrix}$
60 & 72 teeth $\begin{matrix} +.006 \\ -.000 \end{matrix} \begin{pmatrix} +0.15 \\ 0 \end{pmatrix}$

NOTE: T10 Profile Per DIN 7721-2 Rev 6/89.

T10 TIMING BELT PULLEYS





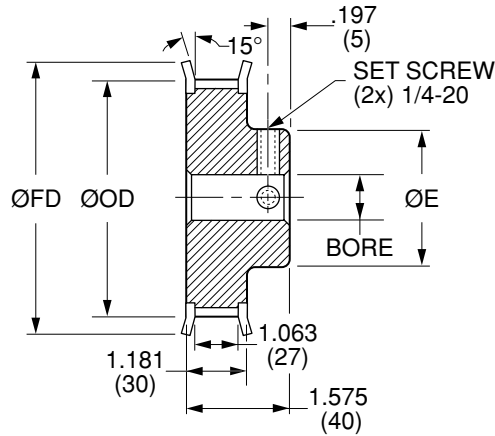
Quality
Transmission
Components

T10 Timing Belt Pulleys

**METRIC Pitch 10 mm T10 (.3937")
FOR BELTS UP TO .984" OR 25 mm WIDE**



MATERIAL: AISI 1045 Steel
FINISH: Black Oxide



NOTE: Dimensions in () are in mm.

Catalog Number	No. of Teeth	Bore	Pitch Diameter	Outside Diameter ØOD	Hub Diameter ØE	Flange Diameter ØFD
QPET10S25025F16	25	.5000 (12.7)	3.138 (79.7)	3.059 (77.7)	2.362 (60)	3.268 (83)
QPET10S25025F20		.6250 (15.875)				
QPET10S25026F16	26	.5000 (12.7)	3.264 (82.9)	3.185 (80.9)	2.362 (60)	3.425 (87)
QPET10S25026F20		.6250 (15.875)				
QPET10S25027F16	27	.5000 (12.7)	3.390 (86.1)	3.311 (84.1)	2.362 (60)	3.583 (91)
QPET10S25028F16		.5000 (12.7)				
QPET10S25028F20	28	.6250 (15.875)	3.514 (89.25)	3.435 (87.25)	2.362 (60)	3.701 (94)
QPET10S25030F16		.5000 (12.7)				
QPET10S25030F20	30	.6250 (15.875)	3.766 (95.65)	3.687 (93.65)	2.362 (60)	3.819 (97)
QPET10S25032F16		.5000 (12.7)				
QPET10S25032F20	32	.6250 (15.875)	4.016 (102)	3.937 (100)	2.559 (65)	4.409 (112)
QPET10S25034F16		.5000 (12.7)				
QPET10S25034F20	34	.6250 (15.875)	4.268 (108.4)	4.189 (106.4)	2.559 (65)	4.528 (115)
QPET10S25036F16		.5000 (12.7)				
QPET10S25036F20	36	.6250 (15.875)	4.518 (114.75)	4.439 (112.75)	2.756 (70)	4.724 (120)
QPET10S25038F16		.5000 (12.7)				
QPET10S25038F20	38	.6250 (15.875)	4.768 (121.1)	4.689 (119.1)	2.756 (70)	4.921 (125)
QPET10S25040F16		.5000 (12.7)				
QPET10S25040F20	40	.6250 (15.875)	5.018 (127.45)	4.939 (125.45)	3.150 (80)	5.315 (135)

Larger number of teeth on the next page

Bore Tolerance: .5000 $\begin{matrix} +.0015 \\ +.0005 \end{matrix} \begin{matrix} (+0.038) \\ (+0.012) \end{matrix}$
 .6250 $\begin{matrix} +.0020 \\ +.0015 \end{matrix} \begin{matrix} (+0.051) \\ (+0.038) \end{matrix}$

O.D. Tolerance: 25 to 32 teeth $\begin{matrix} +.0005 \\ +.0004 \end{matrix} \begin{matrix} (+0.012) \\ (+0.010) \end{matrix}$
 $\begin{matrix} -0.000 \\ 0 \end{matrix}$

34 to 40 teeth $\begin{matrix} +.005 \\ -0.000 \end{matrix} \begin{matrix} (+0.13) \\ 0 \end{matrix}$

NOTE: T10 Profile Per DIN 7721-2 Rev 6/89.

www.econobelt.com



Quality Transmission Components

125 Railroad Avenue, Garden City Park, NY 11040-5016
 Phone: (516) 437-6700 • Fax: (516) 328-3343
 e-mail: support@econobelt.com



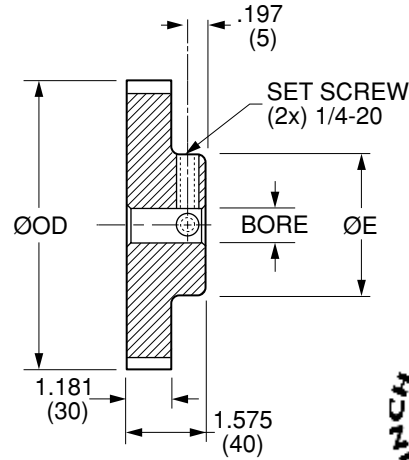
Quality
Transmission
Components

T10 Timing Belt Pulleys

**METRIC Pitch 10 mm T10 (.3937")
FOR BELTS UP TO .984" OR 25 mm WIDE**



MATERIAL: AISI 1045 Steel
FINISH: Black Oxide



NOTE: Dimensions in () are in mm.

Catalog Number	No. of Teeth	Bore	Pitch Diameter	Outside Diameter ØOD	Hub Diameter ØE
QPET10S25044N16	44	.5000 (12.7)	5.520 (140.2)	5.441 (138.2)	3.465 (88)
QPET10S25044N20		.6250 (15.875)			
QPET10S25045N16	45	.5000 (12.7)	5.646 (143.4)	5.567 (141.4)	3.465 (88)
QPET10S25045N20		.6250 (15.875)			
QPET10S25048N16	48	.5000 (12.7)	6.022 (152.95)	5.943 (150.95)	3.740 (95)
QPET10S25048N20		.6250 (15.875)			
QPET10S25060N20	60	.6250 (15.875)	7.524 (191.1)	7.445 (189.1)	4.331 (110)
QPET10S25060N24		.7500 (19.05)			
QPET10S25072N20	72	.6250 (15.875)	9.027 (229.29)	8.948 (227.29)	4.331 (110)
QPET10S25072N24		.7500 (19.05)			

Bore Tolerance: .5000 $\begin{matrix} +.0015 \\ +.0005 \end{matrix} \begin{pmatrix} +.038 \\ +.012 \end{pmatrix}$
.6250 & .7500 $\begin{matrix} +.0020 \\ +.0005 \end{matrix} \begin{pmatrix} +.051 \\ +.012 \end{pmatrix}$

O.D. Tolerance: 44 to 48 teeth $\begin{matrix} +.005 \\ -.000 \end{matrix} \begin{pmatrix} +.013 \\ 0 \end{pmatrix}$
60 & 72 teeth $\begin{matrix} +.006 \\ -.000 \end{matrix} \begin{pmatrix} +.015 \\ 0 \end{pmatrix}$

NOTE: T10 Profile Per DIN 7721-2 Rev 6/89.

T10 TIMING BELT PULLEYS

www.econobelt.com



Quality Transmission Components

125 Railroad Avenue, Garden City Park, NY 11040-5016
Phone: (516) 437-6700 • Fax: (516) 328-3343
e-mail: support@econobelt.com