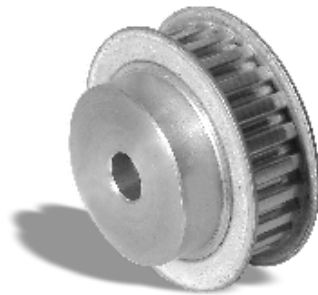




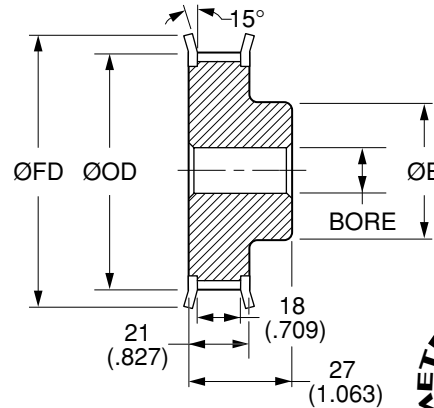
Quality  
Transmission  
Components

# AT5 Timing Belt Pulleys

**METRIC Pitch 5 mm AT5 (.1969")  
FOR BELTS UP TO 16 mm OR .630" WIDE**



**MATERIAL:** 2024-T4 or 2024-T351  
Aluminum Alloy  
**FINISH:** Clear Anodize



**NOTE:** Dimensions in ( ) are in inches.

Catalog Number	No. of Teeth	Bore F8	Pitch Diameter	Outside Diameter ØOD	Hub Diameter ØE	Flange Diameter ØFD	
QPMAT5A16010F06	10	6 (.2362)	16.05 (.632)	15.05 (.593)	11 (.433)	19.5 (.768)	
QPMAT5A16011F06	11		17.65 (.695)	16.65 (.656)		21 (.827)	
QPMAT5A16012F06	12		19.25 (.758)	18.25 (.719)		23 (.906)	
QPMAT5A16013F06	13		20.85 (.821)	19.85 (.781)	14 (.551)	25 (.984)	
QPMAT5A16014F06	14		22.45 (.884)	21.45 (.844)	14 (.551)	25 (.984)	
QPMAT5A16015F06	15		24.05 (.947)	23.05 (.907)	16 (.630)	28 (1.102)	
QPMAT5A16016F06	16		18 (.709)	25.6 (1.008)	24.6 (.969)	32 (1.260)	
QPMAT5A16017F06	17			27.2 (1.071)	26.2 (1.031)		
QPMAT5A16018F06	18			28.8 (1.134)	27.8 (1.094)		
QPMAT5A16019F06	19		29.4 (1.157)	22 (.866)	37 (1.457)		
QPMAT5A16020F06	20		31 (1.220)	23 (.906)	37 (1.457)		
QPMAT5A16021F06	21		32 (1.260)	24 (.945)	38 (1.496)		
QPMAT5A16022F06	22		33.65 (1.325)	24 (.945)	38 (1.496)		
QPMAT5A16023F06	23		34.25 (1.348)	26 (1.024)	41 (1.614)		
QPMAT5A16024F06	24		35.25 (1.388)	26 (1.024)	43 (1.693)		
QPMAT5A16025F06	25		36.8 (1.449)	26 (1.024)	44 (1.732)		
QPMAT5A16026F06	26		38.4 (1.512)	26 (1.024)	44 (1.732)		
QPMAT5A16027F06	27		39.95 (1.573)	30 (1.181)	48 (1.890)		
			41.6 (1.638)				
			43.2 (1.701)				

**Bore Tolerance (F8):** 6 mm +0.028 (+.0011)  
+0.010 (+.0004)

Larger number of teeth on the next page

**O.D. Tolerance:** 10 to 16 teeth +0.05 (+.002)  
0 (-.000)  
17 to 27 teeth +0.08 (+.003)  
0 (-.000)

**NOTE:** AT5 Profile Per DIN 7721-2 Rev 6/89.

[www.econobelt.com](http://www.econobelt.com)



Quality Transmission Components

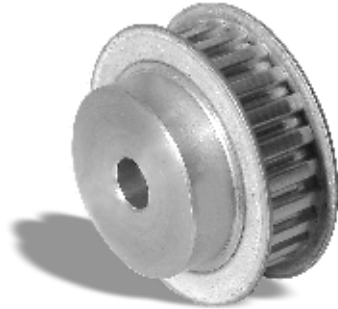
125 Railroad Avenue, Garden City Park, NY 11040-5016  
Phone: (516) 437-6700 • Fax: (516) 328-3343  
e-mail: [support@econobelt.com](mailto:support@econobelt.com)



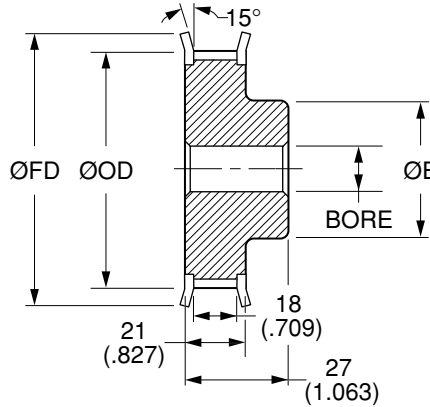
Quality  
Transmission  
Components

# AT5 Timing Belt Pulleys

**METRIC Pitch 5 mm AT5 (.1969")  
FOR BELTS UP TO 16 mm OR .630" WIDE**



**MATERIAL:** 2024-T4 or 2024-T351  
Aluminum Alloy  
**FINISH:** Clear Anodize



**NOTE:** Dimensions in ( ) are in inches.

Catalog Number	No. of Teeth	Bore F8	Pitch Diameter	Outside Diameter ØOD	Hub Diameter ØE	Flange Diameter ØFD
QPMAT5A16028F08	28	8 (.3150)	44.75 (1.762)	43.75 (1.722)	32 (1.260)	48 (1.890)
QPMAT5A16029F08	29		46.35 (1.825)	45.35 (1.785)	34 (1.339)	51 (2.008)
QPMAT5A16030F08	30		47.9 (1.886)	46.9 (1.846)	34 (1.339)	52 (2.047)
QPMAT5A16032F08	32		51.1 (2.012)	50.1 (1.972)	38 (1.496)	54 (2.126)
QPMAT5A16034F08	34		54.3 (2.138)	53.3 (2.098)	38 (1.496)	61 (2.402)
QPMAT5A16035F08	35		55.9 (2.201)	54.9 (2.161)	38 (1.496)	61 (2.402)
QPMAT5A16036F08	36		57.45 (2.262)	56.45 (2.222)	38 (1.496)	61 (2.402)
QPMAT5A16037F08	37		59.05 (2.325)	58.05 (2.285)	40 (1.575)	67 (2.638)
QPMAT5A16038F08	38		60.65 (2.388)	59.65 (2.348)	40 (1.575)	67 (2.638)
QPMAT5A16040F08	40		63.85 (2.514)	62.85 (2.474)		67 (2.638)
QPMAT5A16042F08	42		67.05 (2.640)	66.05 (2.600)		70 (2.756)

**Bore Tolerance (F8):** 8 mm +0.035 (+.0014)  
+0.013 (+.0005)

Larger number of teeth on the next page

**O.D. Tolerance:** 28 to 30 teeth +0.08 (+.003)  
0 (-.000)  
32 to 42 teeth +0.10 (+.004)  
0 (-.000)

**NOTE:** AT5 Profile Per DIN 7721-2 Rev 6/89.

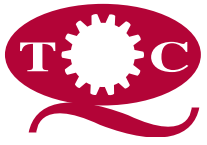
AT5 TIMING BELT PULLEYS

[www.econobelt.com](http://www.econobelt.com)



Quality Transmission Components

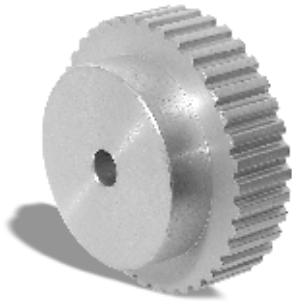
125 Railroad Avenue, Garden City Park, NY 11040-5016  
Phone: (516) 437-6700 • Fax: (516) 328-3343  
e-mail: support@econobelt.com



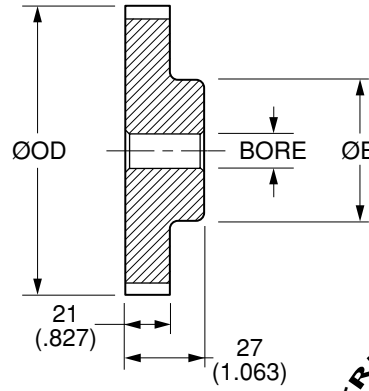
Quality  
Transmission  
Components

# AT5 Timing Belt Pulleys

**METRIC Pitch 5 mm AT5 (.1969")  
FOR BELTS UP TO 16 mm OR .630" WIDE**



**MATERIAL:** 2024-T4 or 2024-T351  
Aluminum Alloy  
**FINISH:** Clear Anodize



**NOTE:** Dimensions in ( ) are in inches.

Catalog Number	No. of Teeth	Bore F8	Pitch Diameter	Outside Diameter ØOD	Hub Diameter ØE
QPMAT5A16044N08	44	8 (.3150)	70.2 (2.764)	69.2 (2.724)	45 (1.772)
QPMAT5A16045N08	45		71.8 (2.827)	70.8 (2.787)	45 (1.772)
QPMAT5A16046N08	46		73.4 (2.890)	72.4 (2.850)	50 (1.969)
QPMAT5A16048N08	48		76.55 (3.014)	75.55 (2.974)	50 (1.969)
QPMAT5A16050N08	50		79.7 (3.138)	78.7 (3.098)	65 (2.559)
QPMAT5A16060N08	60		95.65 (3.766)	94.65 (3.726)	65 (2.559)
QPMAT5A16072N08	72		114.75 (4.518)	113.75 (4.478)	70 (2.756)
QPMAT5A16080N08	80		127.45 (5.018)	126.45 (4.978)	
QPMAT5A16090N08	90		143.45 (5.648)	142.45 (5.608)	
QPMAT5A16100N08	100		159.4 (6.276)	158.4 (6.236)	

**Bore Tolerance (F8):** 8 mm  $+0.035 \begin{pmatrix} +.0014 \\ +0.013 \end{pmatrix} \begin{pmatrix} +.0005 \\ \end{pmatrix}$

**O.D. Tolerance:** 44 to 60 teeth  $+0.10 \begin{pmatrix} +.004 \\ 0 \end{pmatrix} \begin{pmatrix} -.000 \\ \end{pmatrix}$   
72 to 100 teeth  $+0.13 \begin{pmatrix} +.005 \\ 0 \end{pmatrix} \begin{pmatrix} -.000 \\ \end{pmatrix}$

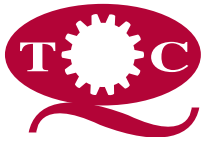
**NOTE:** AT5 Profile Per DIN 7721-2 Rev 6/89.

[www.econobelt.com](http://www.econobelt.com)



Quality Transmission Components

125 Railroad Avenue, Garden City Park, NY 11040-5016  
Phone: (516) 437-6700 • Fax: (516) 328-3343  
e-mail: [support@econobelt.com](mailto:support@econobelt.com)



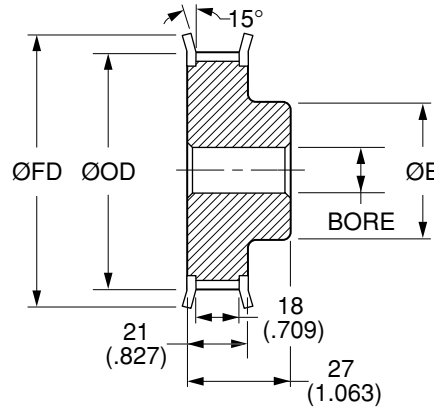
Quality  
Transmission  
Components

# AT5 Timing Belt Pulleys

**METRIC Pitch 5 mm AT5 (.1969")  
FOR BELTS UP TO 16 mm OR .630" WIDE**



**MATERIAL:** AISI 1045 Steel  
**FINISH:** Black Oxide



**NOTE:** Dimensions in ( ) are in inches.

Catalog Number	No. of Teeth	Bore F8	Pitch Diameter	Outside Diameter ØOD	Hub Diameter ØE	Flange Diameter ØFD		
QPMAT5S16010F06	10	6 (.2362)	16.05 (.632)	15.05 (.593)	11 (.433)	19.5 (.768)		
QPMAT5S16011F06	11		17.65 (.695)	16.65 (.656)		21 (.827)		
QPMAT5S16012F06	12		19.25 (.758)	18.25 (.719)		23 (.906)		
QPMAT5S16013F06	13		20.85 (.821)	19.85 (.781)	14 (.551)	25 (.984)		
QPMAT5S16014F06	14		22.45 (.884)	21.45 (.844)	14 (.551)	25 (.984)		
QPMAT5S16015F06	15		24.05 (.947)	23.05 (.907)	16 (.630)	28 (1.102)		
QPMAT5S16016F06	16		18 (.709)	25.6 (1.008)	24.6 (.969)	32 (1.260)		
QPMAT5S16017F06	17			27.2 (1.071)	26.2 (1.031)			18 (.709)
QPMAT5S16018F06	18			28.8 (1.134)	27.8 (1.094)			19 (.748)
QPMAT5S16019F06	19		30.4 (1.197)	29.4 (1.157)	22 (.866)	37 (1.457)		
QPMAT5S16020F06	20		32 (1.260)	31 (1.220)	23 (.906)	37 (1.457)		
QPMAT5S16021F06	21		33.65 (1.325)	32.65 (1.285)	24 (.945)	38 (1.496)		
QPMAT5S16022F06	22		35.25 (1.388)	34.25 (1.348)	24 (.945)	38 (1.496)		
QPMAT5S16023F06	23		36.8 (1.449)	35.8 (1.409)	26 (1.024)	41 (1.614)		
QPMAT5S16024F06	24		38.4 (1.512)	37.4 (1.472)	26 (1.024)	43 (1.693)		
QPMAT5S16025F06	25		39.95 (1.573)	38.95 (1.533)	26 (1.024)	44 (1.732)		
QPMAT5S16026F06	26		41.6 (1.638)	40.6 (1.598)	26 (1.024)	44 (1.732)		
QPMAT5S16027F06	27		43.2 (1.701)	42.2 (1.661)	30 (1.181)	48 (1.890)		

**Bore Tolerance (F8):** 6 mm +0.028 (+.0011)  
+0.010 (+.0004)

Larger number of teeth on the next page

**O.D. Tolerance:** 10 to 16 teeth +0.05 (+.002)  
0 (-.000)  
17 to 27 teeth +0.08 (+.003)  
0 (-.000)

**NOTE:** AT5 Profile Per DIN 7721-2 Rev 6/89.

AT5 TIMING BELT PULLEYS

[www.econobelt.com](http://www.econobelt.com)



Quality Transmission Components

125 Railroad Avenue, Garden City Park, NY 11040-5016  
Phone: (516) 437-6700 • Fax: (516) 328-3343  
e-mail: support@econobelt.com



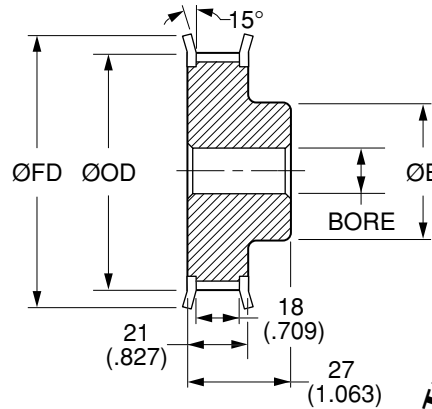
Quality  
Transmission  
Components

# AT5 Timing Belt Pulleys

**METRIC Pitch 5 mm AT5 (.1969")  
FOR BELTS UP TO 16 mm OR .630" WIDE**



**MATERIAL:** AISI 1045 Steel  
**FINISH:** Black Oxide



**NOTE:** Dimensions in ( ) are in inches.

Catalog Number	No. of Teeth	Bore F8	Pitch Diameter	Outside Diameter ØOD	Hub Diameter ØE	Flange Diameter ØFD
QPMAT5S16028F08	28	8 (.3150)	44.75 (1.762)	43.75 (1.722)	32 (1.260)	48 (1.890)
QPMAT5S16029F08	29		46.35 (1.825)	45.35 (1.785)	34 (1.339)	51 (2.008)
QPMAT5S16030F08	30		47.9 (1.886)	46.9 (1.846)	34 (1.339)	52 (2.047)
QPMAT5S16032F08	32		51.1 (2.012)	50.1 (1.972)	38 (1.496)	54 (2.126)
QPMAT5S16034F08	34		54.3 (2.138)	53.3 (2.098)	38 (1.496)	61 (2.402)
QPMAT5S16035F08	35		55.9 (2.201)	54.9 (2.161)	38 (1.496)	61 (2.402)
QPMAT5S16036F08	36		57.45 (2.262)	56.45 (2.222)	38 (1.496)	61 (2.402)
QPMAT5S16037F08	37		59.05 (2.325)	58.05 (2.285)	40 (1.575)	67 (2.638)
QPMAT5S16038F08	38		60.65 (2.388)	59.65 (2.348)	40 (1.575)	67 (2.638)
QPMAT5S16040F08	40		63.85 (2.514)	62.85 (2.474)		67 (2.638)
QPMAT5S16042F08	42		67.05 (2.640)	66.05 (2.600)		70 (2.756)

**Bore Tolerance (F8):** 8 mm  $+0.035 \begin{pmatrix} +.0014 \\ +0.013 \end{pmatrix} \begin{pmatrix} +.0014 \\ +.0005 \end{pmatrix}$

Larger number of teeth on the next page

**O.D. Tolerance:** 28 to 30 teeth  $+0.08 \begin{pmatrix} +.003 \\ 0 \end{pmatrix} \begin{pmatrix} +.003 \\ -.000 \end{pmatrix}$   
32 to 42 teeth  $+0.10 \begin{pmatrix} +.004 \\ 0 \end{pmatrix} \begin{pmatrix} +.004 \\ -.000 \end{pmatrix}$

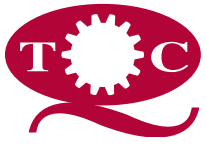
**NOTE:** AT5 Profile Per DIN 7721-2 Rev 6/89.

[www.econobelt.com](http://www.econobelt.com)



Quality Transmission Components

125 Railroad Avenue, Garden City Park, NY 11040-5016  
Phone: (516) 437-6700 • Fax: (516) 328-3343  
e-mail: [support@econobelt.com](mailto:support@econobelt.com)



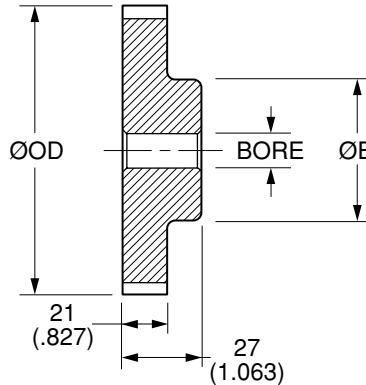
Quality  
Transmission  
Components

# AT5 Timing Belt Pulleys

**METRIC Pitch 5 mm AT5 (.1969")  
FOR BELTS UP TO 16 mm OR .630" WIDE**



**MATERIAL:** AISI 1045 Steel  
**FINISH:** Black Oxide



**NOTE:** Dimensions in ( ) are in inches.

Catalog Number	No. of Teeth	Bore F8	Pitch Diameter	Outside Diameter ØOD	Hub Diameter ØE
QPMAT5S16044N08	44	8 (.3150)	70.2 (2.764)	69.2 (2.724)	45 (1.772)
QPMAT5S16045N08	45		71.8 (2.827)	70.8 (2.787)	45 (1.772)
QPMAT5S16046N08	46		73.4 (2.890)	72.4 (2.850)	50 (1.969)
QPMAT5S16048N08	48		76.55 (3.014)	75.55 (2.974)	50 (1.969)
QPMAT5S16050N08	50		79.7 (3.138)	78.7 (3.098)	65 (2.559)
QPMAT5S16060N08	60		95.65 (3.766)	94.65 (3.726)	65 (2.559)
QPMAT5S16072N08	72		114.75 (4.518)	113.75 (4.478)	70 (2.756)
QPMAT5S16080N08	80		127.45 (5.018)	126.45 (4.978)	
QPMAT5S16090N08	90		143.45 (5.648)	142.45 (5.608)	
QPMAT5S16100N08	100		159.4 (6.276)	158.4 (6.236)	

**Bore Tolerance (F8):** 8 mm  $+0.035 \begin{pmatrix} +.0011 \\ +0.013 \end{pmatrix} \begin{pmatrix} +.0004 \\ +.0004 \end{pmatrix}$

**O.D. Tolerance:** 44 to 60 teeth  $+0.10 \begin{pmatrix} +.004 \\ 0 \end{pmatrix} \begin{pmatrix} -.000 \\ -.000 \end{pmatrix}$   
72 to 100 teeth  $+0.13 \begin{pmatrix} +.005 \\ 0 \end{pmatrix} \begin{pmatrix} -.000 \\ -.000 \end{pmatrix}$

**NOTE:** AT5 Profile Per DIN 7721-2 Rev 6/89.

AT5 TIMING BELT PULLEYS

[www.econobelt.com](http://www.econobelt.com)



Quality Transmission Components

125 Railroad Avenue, Garden City Park, NY 11040-5016  
Phone: (516) 437-6700 • Fax: (516) 328-3343  
e-mail: support@econobelt.com