



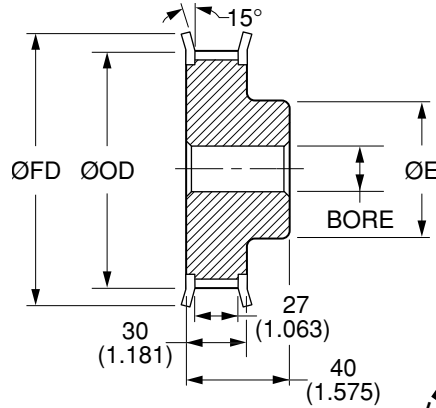
Quality
Transmission
Components

AT10 Timing Belt Pulleys

**METRIC Pitch 10 mm AT10 (.3937")
FOR BELTS UP TO 25 mm OR .984" WIDE**



MATERIAL: 2024-T4 or 2024-T351
Aluminum Alloy
FINISH: Clear Anodize



NOTE: Dimensions in () are in inches.

Catalog Number	No. of Teeth	Bore F8	Pitch Diameter	Outside Diameter ØOD	Hub Diameter ØE	Flange Diameter ØFD
QPMAT10A25010F08	10	8 (.3150)	31.98 (1.259)	29.98 (1.180)	24 (.945)	40 (1.575)
QPMAT10A25011F08	11		35.16 (1.384)	33.16 (1.306)	28 (1.102)	40 (1.575)
QPMAT10A25012F08	12		38.35 (1.510)	36.35 (1.431)	28 (1.102)	43 (1.693)
QPMAT10A25013F08	13		41.55 (1.636)	39.55 (1.557)	32 (1.260)	45 (1.772)
QPMAT10A25014F08	14		44.7 (1.760)	42.7 (1.681)		48 (1.890)
QPMAT10A25015F08	15		47.9 (1.886)	45.9 (1.807)		51 (2.008)
QPMAT10A25016F08	16		51.1 (2.012)	49.1 (1.933)	35 (1.378)	54 (2.126)
QPMAT10A25017F08	17		54.25 (2.136)	52.25 (2.057)	35 (1.378)	57 (2.244)
QPMAT10A25018F08	18		57.45 (2.262)	55.45 (2.183)	40 (1.575)	60 (2.362)
QPMAT10A25019F08	19		60.65 (2.388)	58.65 (2.309)	44 (1.732)	67 (2.638)
QPMAT10A25020F08	20		63.8 (2.512)	61.8 (2.433)	46 (1.811)	67 (2.638)
QPMAT10A25022F08	22		70.2 (2.764)	68.2 (2.685)	52 (2.047)	75 (2.953)
QPMAT10A25023F08	23		73.4 (2.890)	71.4 (2.811)	52 (2.047)	80 (3.150)
QPMAT10A25024F08	24		76.55 (3.014)	74.55 (2.935)	58 (2.283)	83 (3.268)
QPMAT10A25025F08	25		79.75 (3.140)	77.75 (3.061)	60 (2.362)	83 (3.268)
QPMAT10A25026F08	26		82.95 (3.266)	80.95 (3.187)	60 (2.362)	87 (3.425)
QPMAT10A25027F08	27		86.1 (3.390)	84.1 (3.311)		91 (3.583)
QPMAT10A25028F08	28		89.25 (3.514)	87.25 (3.435)		94 (3.701)
QPMAT10A25029F08	29		92.45 (3.638)	90.45 (3.561)		97 (3.819)
QPMAT10A25030F08	30		95.65 (3.766)	93.65 (3.687)		

Bore Tolerance (F8): 8 mm +0.035 (+.0014)
+0.013 (+.0005)

Larger number of teeth on the next page

O.D. Tolerance: 10 to 16 teeth +0.08 (+.003)
0 (-.000)
17 to 30 teeth +0.10 (+.004)
0 (-.000)

NOTE: AT10 Profile Per DIN 7721-2 Rev 6/89.

www.econobelt.com



Quality Transmission Components

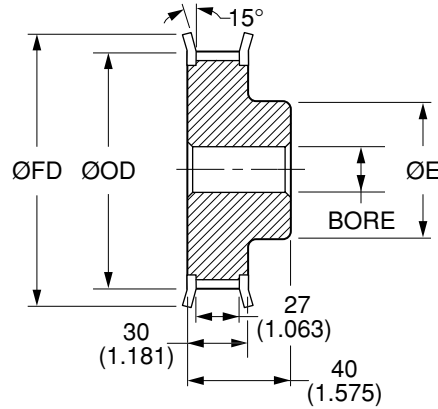
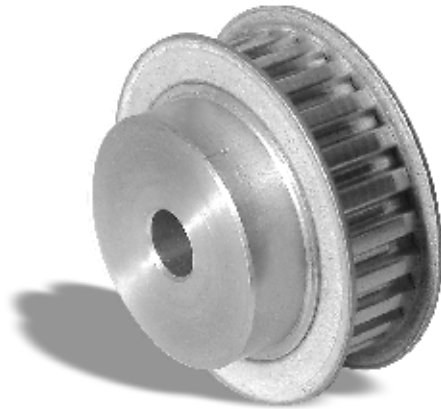
125 Railroad Avenue, Garden City Park, NY 11040-5016
Phone: (516) 437-6700 • Fax: (516) 328-3343
e-mail: support@econobelt.com



Quality
Transmission
Components

AT10 Timing Belt Pulleys

**METRIC Pitch 10 mm AT10 (.3937")
FOR BELTS UP TO 25 mm OR .984" WIDE**



MATERIAL: 2024-T4 or 2024-T351
Aluminum Alloy
FINISH: Clear Anodize



NOTE: Dimensions in () are in inches.

Catalog Number	No. of Teeth	Bore F8	Pitch Diameter	Outside Diameter ØOD	Hub Diameter ØE	Flange Diameter ØFD
QPMAT10A25032F10	32	10 (.3937)	102 (4.016)	100 (3.937)	65 (2.559)	112 (4.409)
QPMAT10A25034F10	34		108.4 (4.268)	106.4 (4.189)	65 (2.559)	115 (4.528)
QPMAT10A25036F10	36		114.75 (4.518)	112.75 (4.439)	70 (2.756)	120 (4.724)
QPMAT10A25038F10	38		121.1 (4.768)	119.1 (4.689)	70 (2.756)	125 (4.921)
QPMAT10A25040F10	40		127.45 (5.018)	125.45 (4.939)	80 (3.150)	135 (5.315)

Bore Tolerance (F8): 10 mm $+0.035 \begin{pmatrix} +.0014 \\ +.0013 \end{pmatrix}$

Larger number of teeth on the next page

O.D. Tolerance: 32 teeth $+0.10 \begin{pmatrix} +.004 \\ 0 \end{pmatrix}$
0 $\begin{pmatrix} -.000 \\ 0 \end{pmatrix}$
34 to 40 teeth $+0.13 \begin{pmatrix} +.005 \\ 0 \end{pmatrix}$
0 $\begin{pmatrix} -.000 \\ 0 \end{pmatrix}$

NOTE: AT10 Profile Per DIN 7721-2 Rev 6/89.

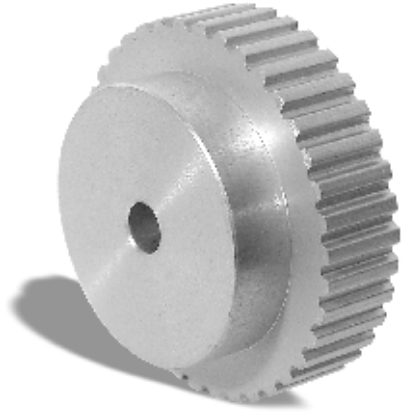




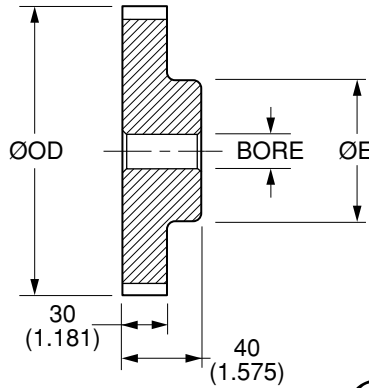
Quality
Transmission
Components

AT10 Timing Belt Pulleys

**METRIC Pitch 10 mm AT10 (.3937")
FOR BELTS UP TO 25 mm OR .984" WIDE**



MATERIAL: 2024-T4 or 2024-T351
Aluminum Alloy
FINISH: Clear Anodize



NOTE: Dimensions in () are in inches.

Catalog Number	No. of Teeth	Bore F8	Pitch Diameter	Outside Diameter ØOD	Hub Diameter ØE
QPMAT10A25044N10	44	10 (.3937)	140.2 (5.520)	138.2 (5.441)	88 (3.465)
QPMAT10A25045N16	45	16 (.6299)	143.4 (5.646)	141.4 (5.567)	88 (3.465)
QPMAT10A25048N16	48		152.95 (6.022)	150.95 (5.943)	95 (3.740)
QPMAT10A25060N16	60		191.15 (7.526)	189.15 (7.447)	110 (4.331)
QPMAT10A25072N16	72		229.3 (9.028)	227.3 (8.949)	110 (4.331)

Bore Tolerance (F8): 10 mm $+0.035 \begin{pmatrix} +.0014 \\ +0.013 \end{pmatrix} \begin{pmatrix} +.0005 \end{pmatrix}$
16 mm $+0.043 \begin{pmatrix} +.0017 \\ +0.016 \end{pmatrix} \begin{pmatrix} +.0006 \end{pmatrix}$

O.D. Tolerance: 44 to 48 teeth $+0.13 \begin{pmatrix} +.005 \\ 0 \end{pmatrix} \begin{pmatrix} -.000 \end{pmatrix}$
60 & 72 teeth $+0.15 \begin{pmatrix} +.006 \\ 0 \end{pmatrix} \begin{pmatrix} -.000 \end{pmatrix}$

NOTE: AT10 Profile Per DIN 7721-2 Rev 6/89.

www.econobelt.com



Quality Transmission Components

125 Railroad Avenue, Garden City Park, NY 11040-5016
Phone: (516) 437-6700 • Fax: (516) 328-3343
e-mail: support@econobelt.com



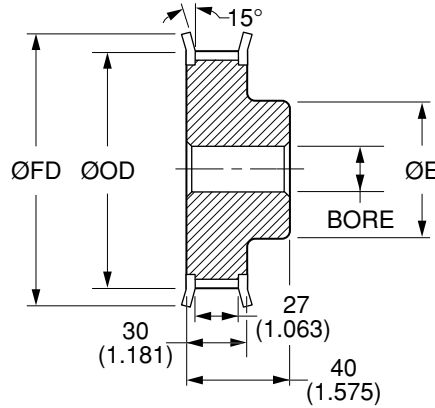
Quality
Transmission
Components

AT10 Timing Belt Pulleys

**METRIC Pitch 10 mm AT10 (.3937")
FOR BELTS UP TO 25 mm OR .984" WIDE**



MATERIAL: AISI 1045 Steel
FINISH: Black Oxide



NOTE: Dimensions in () are in inches.

Catalog Number	No. of Teeth	Bore F8	Pitch Diameter	Outside Diameter ØOD	Hub Diameter ØE	Flange Diameter ØFD
QPMAT10S25010F08	10	8 (.3150)	31.98 (1.259)	29.98 (1.180)	24 (.945)	40 (1.575)
QPMAT10S25011F08	11		35.16 (1.384)	33.16 (1.306)	28 (1.102)	40 (1.575)
QPMAT10S25012F08	12		38.35 (1.510)	36.35 (1.431)	28 (1.102)	43 (1.693)
QPMAT10S25013F08	13		41.55 (1.636)	39.55 (1.557)	32 (1.260)	45 (1.772)
QPMAT10S25014F08	14		44.7 (1.760)	42.7 (1.681)		48 (1.890)
QPMAT10S25015F08	15		47.9 (1.886)	45.9 (1.807)		51 (2.008)
QPMAT10S25016F08	16		51.1 (2.012)	49.1 (1.933)	35 (1.378)	54 (2.126)
QPMAT10S25017F08	17		54.25 (2.136)	52.25 (2.057)	35 (1.378)	57 (2.244)
QPMAT10S25018F08	18		57.45 (2.262)	55.45 (2.183)	40 (1.575)	60 (2.362)
QPMAT10S25019F08	19		60.65 (2.388)	58.65 (2.309)	44 (1.732)	67 (2.638)
QPMAT10S25020F08	20		63.8 (2.512)	61.8 (2.433)	46 (1.811)	67 (2.638)
QPMAT10S25022F08	22		70.2 (2.764)	68.2 (2.685)	52 (2.047)	75 (2.953)
QPMAT10S25023F08	23		73.4 (2.890)	71.4 (2.811)	52 (2.047)	80 (3.150)
QPMAT10S25024F08	24		76.55 (3.014)	74.55 (2.935)	58 (2.283)	83 (3.268)
QPMAT10S25025F08	25		79.75 (3.140)	77.75 (3.061)	60 (2.362)	83 (3.268)
QPMAT10S25026F08	26		82.95 (3.266)	80.95 (3.187)	60 (2.362)	87 (3.425)
QPMAT10S25027F08	27		86.1 (3.390)	84.1 (3.311)		91 (3.583)
QPMAT10S25028F08	28		89.25 (3.514)	87.25 (3.435)		94 (3.701)
QPMAT10S25030F08	30		95.65 (3.766)	93.65 (3.687)		97 (3.819)

Bore Tolerance (F8): 8 mm +0.035 (+.0014)
+0.013 (+.0005)

Larger number of teeth on the next page

O.D. Tolerance: 10 to 16 teeth +0.08 (+.003)
0 (-.000)
17 to 30 teeth +0.10 (+.004)
0 (-.000)

NOTE: AT10 Profile Per DIN 7721-2 Rev 6/89.

www.econobelt.com



Quality Transmission Components

125 Railroad Avenue, Garden City Park, NY 11040-5016
Phone: (516) 437-6700 • Fax: (516) 328-3343
e-mail: support@econobelt.com



Quality
Transmission
Components

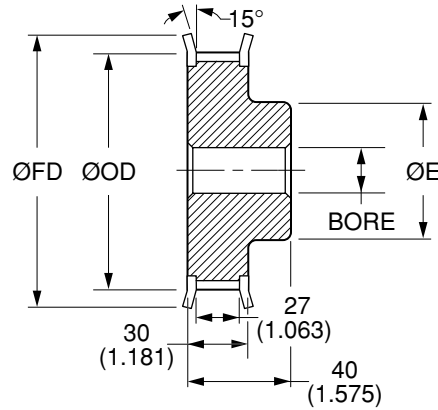
AT10 Timing Belt Pulleys

**METRIC Pitch 10 mm AT10 (.3937")
FOR BELTS UP TO 25 mm OR .984" WIDE**

AT10 TIMING BELT PULLEYS



MATERIAL: AISI 1045 Steel
FINISH: Black Oxide



NOTE: Dimensions in () are in inches.

Catalog Number	No. of Teeth	Bore F8	Pitch Diameter	Outside Diameter ØOD	Hub Diameter ØE	Flange Diameter ØFD
QPMAT10S25032F10	32	10 (.3937)	102 (4.016)	100 (3.937)	65 (2.559)	112 (4.409)
QPMAT10S25034F10	34		108.4 (4.268)	106.4 (4.189)	65 (2.559)	115 (4.528)
QPMAT10S25036F10	36		114.75 (4.518)	112.75 (4.439)	70 (2.756)	120 (4.724)
QPMAT10S25038F10	38		121.1 (4.768)	119.1 (4.689)	70 (2.756)	125 (4.921)
QPMAT10S25040F10	40		127.45 (5.018)	125.45 (4.939)	80 (3.150)	135 (5.315)

Bore Tolerance (F8): 10 mm $+0.035 \begin{pmatrix} +.0014 \\ +0.013 \end{pmatrix} \begin{pmatrix} +.0005 \\ \end{pmatrix}$

Larger number of teeth on the next page

O.D. Tolerance: 32 teeth $+0.10 \begin{pmatrix} +.004 \\ 0 \end{pmatrix} \begin{pmatrix} -.000 \\ \end{pmatrix}$
34 to 40 teeth $+0.13 \begin{pmatrix} +.005 \\ 0 \end{pmatrix} \begin{pmatrix} -.000 \\ \end{pmatrix}$

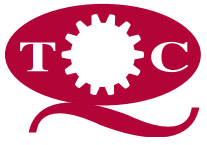
NOTE: AT10 Profile Per DIN 7721-2 Rev 6/89.

www.econobelt.com



Quality Transmission Components

125 Railroad Avenue, Garden City Park, NY 11040-5016
Phone: (516) 437-6700 • Fax: (516) 328-3343
e-mail: support@econobelt.com



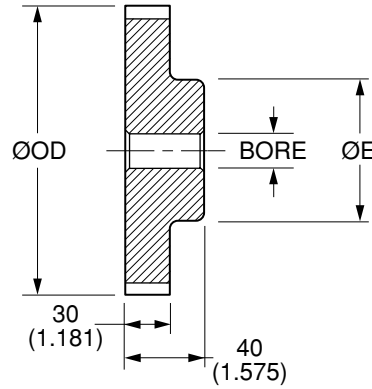
Quality
Transmission
Components

AT10 Timing Belt Pulleys

**METRIC Pitch 10 mm AT10 (.3937")
FOR BELTS UP TO 25 mm OR .984" WIDE**



MATERIAL: AISI 1045 Steel
FINISH: Black Oxide



NOTE: Dimensions in () are in inches.

Catalog Number	No. of Teeth	Bore F8	Pitch Diameter	Outside Diameter ØOD	Hub Diameter ØE
QPMAT10S25044N10	44	10 (.3937)	140.2 (5.520)	138.2 (5.441)	88 (3.465)
QPMAT10S25045N16	45		143.4 (5.646)	141.4 (5.567)	88 (3.465)
QPMAT10S25048N16	48		152.95 (6.022)	150.95 (5.943)	95 (3.740)
QPMAT10S25060N16	60		191.15 (7.526)	189.15 (7.447)	110 (4.331)
QPMAT10S25072N16	72		229.3 (9.028)	227.3 (8.949)	110 (4.331)

Bore Tolerance (F8): 10 mm $+0.035 \begin{pmatrix} +.0014 \\ +0.013 \end{pmatrix} \begin{pmatrix} +.0005 \end{pmatrix}$
16 mm $+0.043 \begin{pmatrix} +.0017 \\ +0.016 \end{pmatrix} \begin{pmatrix} +.0006 \end{pmatrix}$

O.D. Tolerance: 44 to 48 teeth $+0.13 \begin{pmatrix} +.005 \\ 0 \end{pmatrix} \begin{pmatrix} -.000 \end{pmatrix}$
60 & 72 teeth $+0.15 \begin{pmatrix} +.006 \\ 0 \end{pmatrix} \begin{pmatrix} -.000 \end{pmatrix}$

NOTE: AT10 Profile Per DIN 7721-2 Rev 6/89.

