



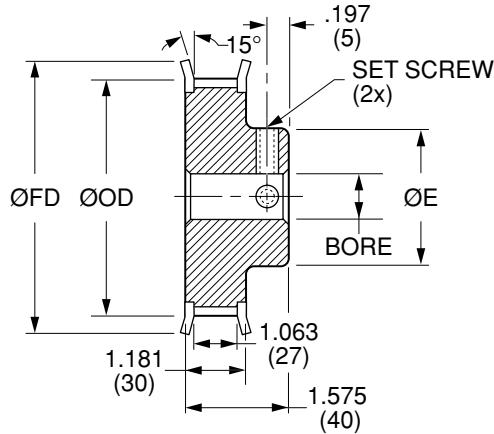
Quality
Transmission
Components

AT10 Timing Belt Pulleys

**METRIC Pitch 10 mm AT10 (.3937")
FOR BELTS UP TO .984" OR 25 mm WIDE**



MATERIAL: 2024-T4 or 2024-T351
Aluminum Alloy
FINISH: Clear Anodize



NOTE: Dimensions in () are in mm.

AT10 TIMING BELT PULLEYS

Catalog Number	No. of Teeth	Bore	Pitch Diameter	Outside Diameter ØOD	Hub Diameter ØE	Flange Diameter ØFD	Set Screw
QPEAT10A25010F12	10	.3750 (9.525)	1.259 (31.98)	1.180 (29.98)	.945 (24)	1.575 (40)	#10-32 1/4-20
QPEAT10A25010F16		.5000 (12.7)					
QPEAT10A25011F12	11	.3750 (9.525)	1.384 (35.16)	1.306 (33.16)	1.102 (28)	1.575 (40)	#10-32
QPEAT10A25011F16		.5000 (12.7)					
QPEAT10A25012F12	12	.3750 (9.525)	1.510 (38.35)	1.431 (36.35)	1.102 (28)	1.693 (43)	#10-32 1/4-20
QPEAT10A25012F16		.5000 (12.7)					
QPEAT10A25013F12	13	.3750 (9.525)	1.634 (41.5)	1.555 (39.5)	1.260 (32)	1.772 (45)	#10-32
QPEAT10A25013F16		.5000 (12.7)					
QPEAT10A25014F12	14	.3750 (9.525)	1.760 (44.7)	1.681 (42.7)	1.260 (32)	1.890 (48)	#10-32 1/4-20
QPEAT10A25014F16		.5000 (12.7)					
QPEAT10A25015F12	15	.3750 (9.525)	1.886 (47.9)	1.807 (45.9)	1.260 (32)	2.008 (51)	#10-32 1/4-20
QPEAT10A25015F16		.5000 (12.7)					
QPEAT10A25016F16	16	.5000 (12.7)	2.010 (51.05)	1.931 (49.05)	1.378 (35)	2.126 (54)	1/4-20
QPEAT10A25016F20		.6250 (15.875)					
QPEAT10A25017F16	17	.5000 (12.7)	2.136 (54.25)	2.057 (52.25)	1.378 (35)	2.244 (57)	1/4-20
QPEAT10A25017F20		.6250 (15.875)					
QPEAT10A25018F16	18	.5000 (12.7)	2.262 (57.45)	2.183 (55.45)	1.575 (40)	2.362 (60)	1/4-20
QPEAT10A25018F20		.6250 (15.875)					
QPEAT10A25019F16	19	.5000 (12.7)	2.386 (60.6)	2.307 (58.6)	1.732 (44)	2.638 (67)	1/4-20
QPEAT10A25019F20		.6250 (15.875)					
QPEAT10A25020F16	20	.5000 (12.7)	2.512 (63.8)	2.433 (61.8)	1.811 (46)	2.638 (67)	1/4-20
QPEAT10A25020F20		.6250 (15.875)					
QPEAT10A25022F16	22	.5000 (12.7)	2.762 (70.15)	2.683 (68.15)	2.047 (52)	2.953 (75)	1/4-20
QPEAT10A25022F20		.6250 (15.875)					
QPEAT10A25023F16	23	.5000 (12.7)	2.888 (73.35)	2.809 (71.35)	2.047 (52)	3.150 (80)	1/4-20
QPEAT10A25023F20		.6250 (15.875)					
QPEAT10A25024F16	24	.5000 (12.7)	3.014 (76.55)	2.935 (74.55)	2.283 (58)	3.150 (80)	1/4-20
QPEAT10A25024F20		.6250 (15.875)					

Bore Tolerance:

.3750 & .5000 +.0015 (+0.038)
+.0005 (+0.012)
.6250 +.0020 (+0.051)
+.0005 (+0.012)

O.D. Tolerance:

10 to 16 teeth +.003 (+0.08)
-.000 (0)
17 to 24 teeth +.004 (+0.10)
-.000 (0)

Larger number of teeth on the next page

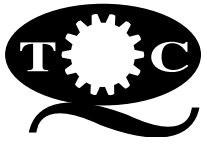
NOTE: AT10 Profile Per DIN 7721-2 Rev 6/89.

www.econobelt.com



Quality Transmission Components

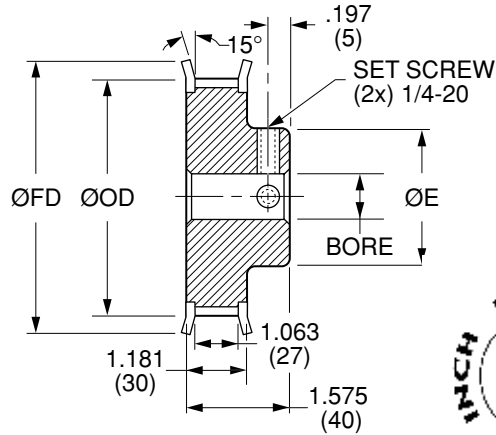
125 Railroad Avenue, Garden City Park, NY 11040-5016
Phone: (516) 437-6700 • Fax: (516) 328-3343
e-mail: support@econobelt.com



Quality
Transmission
Components

AT10 Timing Belt Pulleys

**METRIC Pitch 10 mm AT10 (.3937")
FOR BELTS UP TO .984" OR 25 mm WIDE**



MATERIAL: 2024-T4 or 2024-T351
Aluminum Alloy
FINISH: Clear Anodize

NOTE: Dimensions in () are in mm.

Catalog Number	No. of Teeth	Bore	Pitch Diameter	Outside Diameter ØOD	Hub Diameter ØE	Flange Diameter ØFD
QPEAT10A25025F16 QPEAT10A25025F20	25	.5000 (12.7) .6250 (15.875)	3.138 (79.7)	3.059 (77.7)	2.362 (60)	3.268 (83)
QPEAT10A25026F16 QPEAT10A25026F20	26	.5000 (12.7) .6250 (15.875)	3.264 (82.9)	3.185 (80.9)	2.362 (60)	3.425 (87)
QPEAT10A25027F16	27	.5000 (12.7)	3.390 (86.1)	3.311 (84.1)	2.362 (60)	3.583 (91)
QPEAT10A25028F16 QPEAT10A25028F20	28	.5000 (12.7) .6250 (15.875)	3.514 (89.25)	3.435 (87.25)	2.362 (60)	3.701 (94)
QPEAT10A25030F16 QPEAT10A25030F20	30	.5000 (12.7) .6250 (15.875)	3.766 (95.65)	3.687 (93.65)	2.362 (60)	3.819 (97)
QPEAT10A25032F16 QPEAT10A25032F20	32	.5000 (12.7) .6250 (15.875)	4.016 (102)	3.937 (100)	2.559 (65)	4.409 (112)
QPEAT10A25034F16 QPEAT10A25034F20	34	.5000 (12.7) .6250 (15.875)	4.268 (108.4)	4.189 (106.4)	2.559 (65)	4.528 (115)
QPEAT10A25036F16 QPEAT10A25036F20	36	.5000 (12.7) .6250 (15.875)	4.518 (114.75)	4.439 (112.75)	2.756 (70)	4.724 (120)
QPEAT10A25038F16 QPEAT10A25038F20	38	.5000 (12.7) .6250 (15.875)	4.768 (121.1)	4.689 (119.1)	2.756 (70)	4.921 (125)
QPEAT10A25040F16 QPEAT10A25040F20	40	.5000 (12.7) .6250 (15.875)	5.018 (127.45)	4.939 (125.45)	3.150 (80)	5.315 (135)

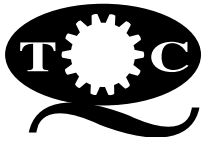
Bore Tolerance:
.5000 +.0015 (+0.038)
 +.0005 (+0.012)
.6250 +.0020 (+0.051)
 +.0005 (+0.012)

O.D. Tolerance:
25 to 32 teeth +.004 (+0.10)
 -.000 (0)
34 to 40 teeth +.005 (+0.13)
 -.000 (0)

Larger number of teeth on the next page

NOTE: AT10 Profile Per DIN 7721-2 Rev 6/89.

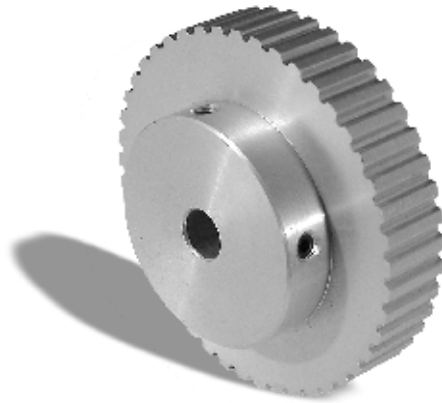




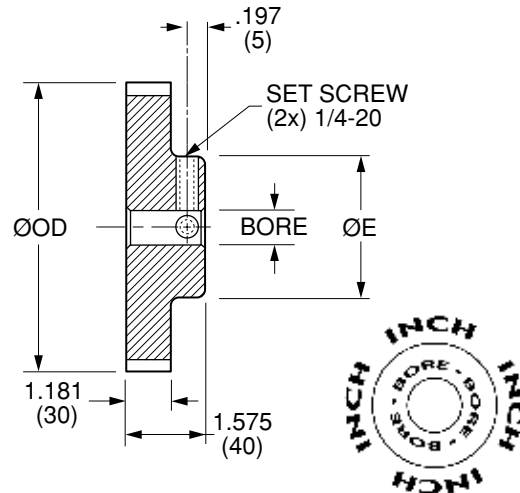
Quality
Transmission
Components

AT10 Timing Belt Pulleys

**METRIC Pitch 10 mm AT10 (.3937")
FOR BELTS UP TO .984" OR 25 mm WIDE**



MATERIAL: 2024-T4 or 2024-T351
Aluminum Alloy
FINISH: Clear Anodize



NOTE: Dimensions in () are in mm.

Catalog Number	No. of Teeth	Bore	Pitch Diameter	Outside Diameter ØOD	Hub Diameter ØE
QPEAT10A25044N16	44	.5000 (12.7)	5.520 (140.2)	5.441 (138.2)	3.465 (88)
QPEAT10A25044N20		.6250 (15.875)			
QPEAT10A25045N16	45	.5000 (12.7)	5.646 (143.4)	5.567 (141.4)	3.465 (88)
QPEAT10A25045N20		.6250 (15.875)			
QPEAT10A25048N16	48	.5000 (12.7)	6.022 (152.95)	5.943 (150.95)	3.740 (95)
QPEAT10A25048N20		.6250 (15.875)			
QPEAT10A25060N20	60	.6250 (15.875)	7.524 (191.1)	7.445 (189.1)	4.331 (110)
QPEAT10A25060N24		.7500 (19.05)			
QPEAT10A25072N20	72	.6250 (15.875)	9.027 (229.29)	8.948 (227.29)	4.331 (110)
QPEAT10A25072N24		.7500 (19.05)			

Bore Tolerance:

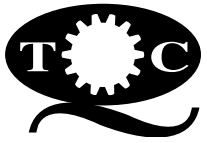
.5000 +.0015 (+0.038)
 +.0005 (+0.012)
.6250 & .7500 +.0020 (+0.051)
 +.0005 (+0.012)

O.D. Tolerance:

44 to 48 teeth +.005 (+0.13)
 -.000 (0)
60 & 72 teeth +.006 (+0.15)
 -.000 (0)

NOTE: AT10 Profile Per DIN 7721-2 Rev 6/89.





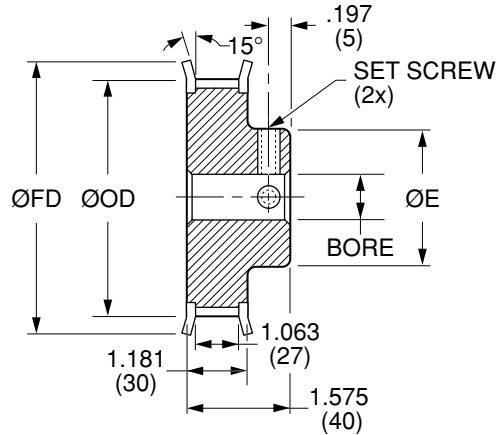
Quality
Transmission
Components

AT10 Timing Belt Pulleys

**METRIC Pitch 10 mm AT10 (.3937")
FOR BELTS UP TO .984" OR 25 mm WIDE**



MATERIAL: AISI 1045 Steel
FINISH: Black Oxide



NOTE: Dimensions in () are in mm.

Catalog Number	No. of Teeth	Bore	Pitch Diameter	Outside Diameter ØOD	Hub Diameter ØE	Flange Diameter ØFD	Set Screw
QPEAT10S25010F12	10	.3750 (9.525)	1.259 (31.98)	1.180 (29.98)	.945 (24)	1.575 (40)	#10-32
QPEAT10S25010F16		.5000 (12.7)					1/4-20
QPEAT10S25011F12	11	.3750 (9.525)	1.384 (35.16)	1.306 (33.16)	1.102 (28)	1.575 (40)	#10-32
QPEAT10S25012F12	12	.3750 (9.525)	1.510 (38.35)	1.431 (36.35)	1.102 (28)	1.693 (43)	#10-32
QPEAT10S25012F16		.5000 (12.7)					1/4-20
QPEAT10S25013F12	13	.3750 (9.525)	1.634 (41.5)	1.555 (39.5)	1.260 (32)	1.772 (45)	#10-32
QPEAT10S25014F12	14	.3750 (9.525)	1.760 (44.7)	1.681 (42.7)	1.260 (32)	1.890 (48)	#10-32
QPEAT10S25014F16		.5000 (12.7)					1/4-20
QPEAT10S25015F12	15	.3750 (9.525)	1.886 (47.9)	1.807 (45.9)	1.260 (32)	2.008 (51)	#10-32
QPEAT10S25015F16		.5000 (12.7)					1/4-20
QPEAT10S25016F16	16	.5000 (12.7)	2.010 (51.05)	1.931 (49.05)	1.378 (35)	2.126 (54)	1/4-20
QPEAT10S25016F20		.6250 (15.875)					1/4-20
QPEAT10S25017F16	17	.5000 (12.7)	2.136 (54.25)	2.057 (52.25)	1.378 (35)	2.244 (57)	1/4-20
QPEAT10S25018F16	18	.5000 (12.7)	2.262 (57.45)	2.183 (55.45)	1.575 (40)	2.362 (60)	1/4-20
QPEAT10S25018F20		.6250 (15.875)					1/4-20
QPEAT10S25019F16	19	.5000 (12.7)	2.386 (60.6)	2.307 (58.6)	1.732 (44)	2.638 (67)	1/4-20
QPEAT10S25020F16	20	.5000 (12.7)	2.512 (63.8)	2.433 (61.8)	1.811 (46)	2.638 (67)	1/4-20
QPEAT10S25020F20		.6250 (15.875)					1/4-20
QPEAT10S25022F16	22	.5000 (12.7)	2.762 (70.15)	2.683 (68.15)	2.047 (52)	2.953 (75)	1/4-20
QPEAT10S25022F20		.6250 (15.875)					1/4-20
QPEAT10S25023F16	23	.5000 (12.7)	2.888 (73.35)	2.809 (71.35)	2.047 (52)	3.150 (80)	1/4-20
QPEAT10S25024F16	24	.5000 (12.7)	3.014 (76.55)	2.935 (74.55)	2.283 (58)	3.268 (83)	1/4-20
QPEAT10S25024F20		.6250 (15.875)					1/4-20

Bore Tolerance:

.3750 & .5000 +.0015 (+0.038)
 +.0005 (+0.012)
 .6250 +.0020 (+0.051)
 +.0005 (+0.012)

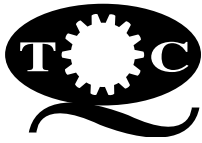
O.D. Tolerance:

10 to 16 teeth +.003 (+0.08)
 -.000 (0)
 17 to 24 teeth +.004 (+0.10)
 -.000 (0)

Larger number of teeth on the next page

NOTE: AT10 Profile Per DIN 7721-2 Rev 6/89.





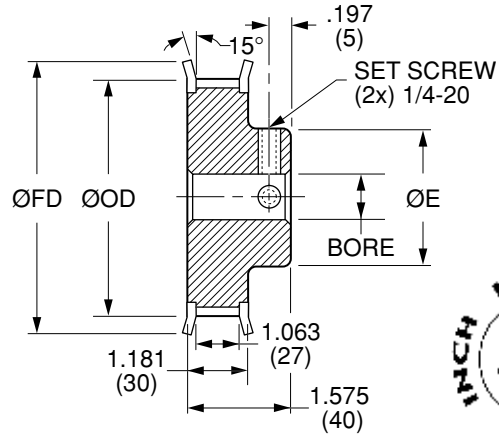
Quality
Transmission
Components

AT10 Timing Belt Pulleys

**METRIC Pitch 10 mm AT10 (.3937")
FOR BELTS UP TO .984" OR 25 mm WIDE**



MATERIAL: AISI 1045 Steel
FINISH: Black Oxide



NOTE: Dimensions in () are in mm.

Catalog Number	No. of Teeth	Bore	Pitch Diameter	Outside Diameter ØOD	Hub Diameter ØE	Flange Diameter ØFD
QPEAT10S25025F16 QPEAT10S25025F20	25	.5000 (12.7) .6250 (15.875)	3.138 (79.7)	3.059 (77.7)	2.362 (60)	3.268 (83)
QPEAT10S25026F16 QPEAT10S25026F20	26	.5000 (12.7) .6250 (15.875)	3.264 (82.9)	3.185 (80.9)	2.362 (60)	3.425 (87)
QPEAT10S25027F16	27	.5000 (12.7)	3.390 (86.1)	3.311 (84.1)	2.362 (60)	3.583 (91)
QPEAT10S25028F16 QPEAT10S25028F20	28	.5000 (12.7) .6250 (15.875)	3.514 (89.25)	3.435 (87.25)	2.362 (60)	3.701 (94)
QPEAT10S25030F16 QPEAT10S25030F20	30	.5000 (12.7) .6250 (15.875)	3.766 (96.65)	3.687 (93.65)	2.362 (60)	3.819 (97)
QPEAT10S25032F16 QPEAT10S25032F20	32	.5000 (12.7) .6250 (15.875)	4.016 (102)	3.937 (100)	2.559 (65)	4.409 (112)
QPEAT10S25034F16 QPEAT10S25034F20	34	.5000 (12.7) .6250 (15.875)	4.268 (108.4)	4.189 (106.4)	2.559 (65)	4.528 (115)
QPEAT10S25036F16 QPEAT10S25036F20	36	.5000 (12.7) .6250 (15.875)	4.518 (114.75)	4.439 (112.75)	2.756 (70)	4.724 (120)
QPEAT10S25038F16 QPEAT10S25038F20	38	.5000 (12.7) .6250 (15.875)	4.768 (121.1)	4.689 (119.1)	2.756 (70)	4.921 (125)
QPEAT10S25040F16 QPEAT10S25040F20	40	.5000 (12.7) .6250 (15.875)	5.018 (127.45)	4.939 (125.45)	3.150 (80)	5.315 (135)

Bore Tolerance:

.5000 +.0015 (+0.038)
 +.0005 (+0.012)
.6250 +.0020 (+0.051)
 +.0005 (+0.012)

O.D. Tolerance:

25 to 32 teeth +.004 (+0.10)
 -.000 (0)
34 to 40 teeth +.005 (+0.13)
 -.000 (0)

Larger number of teeth on the next page

NOTE: AT10 Profile Per DIN 7721-2 Rev 6/89.

www.econobelt.com



Quality Transmission Components

125 Railroad Avenue, Garden City Park, NY 11040-5016
Phone: (516) 437-6700 • Fax: (516) 328-3343
e-mail: support@econobelt.com

