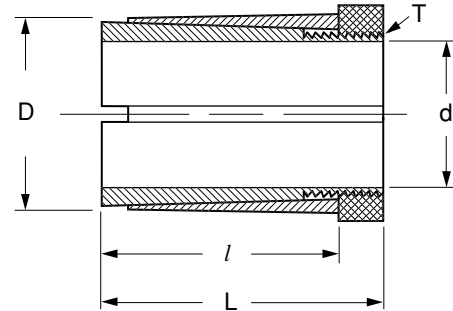
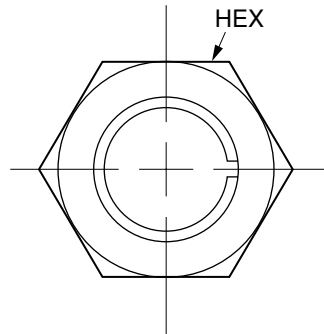
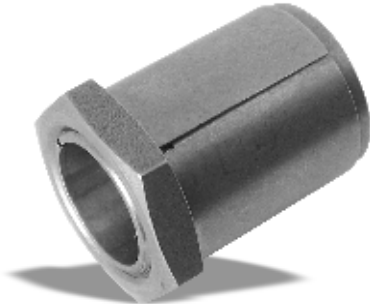




Taper Bushings

Doesn't Mar Shafts



MATERIAL: Stainless Steel



TAPER BUSHINGS

NOTE: Dimensions in () are in inches.

Catalog Number	d** H7	D* h7	<i>l</i>	L ±0.1	Hex Across Flats	Thread T	Max. Torque Nm (lb • in)
QTM-BSS04X08X15	4 (.157)	8 (.315)			8 (.315)	M6 x 0.5	3 (26.6)
QTM-BSS05X10X15	5 (.197)	10 (.394)	12.5 (.492)	15 (.591)	10 (.394)	M8 x 0.5	4 (35.4)
QTM-BSS06X10X15	6 (.236)	10 (.394)			10 (.394)	M8 x 0.5	7 (62.0)
QTE-BSS02X10X15	6.35 (.250)	10 (.394)	12.5 (.492)	15 (.591)	10 (.394)	M8 x 0.5	7 (62.0)
QTM-BSS07X12X15	7 (.276)	12 (.472)	12 (.472)	15 (.591)	12 (.472)	M10 x 0.75	8 (70.8)
QTM-BSS08X14X22	8 (.315)	14 (.551)	19 (.748)	22 (.866)	16 (.630)	M12 x 1	14 (123.9)
QTM-BSS09X14X22	9 (.354)	14 (.551)	19 (.748)	22 (.866)	16 (.630)	M12 x 1	14 (123.9)
QTE-BSS03X14X22	9.52 (.375)	14 (.551)	19 (.748)	22 (.866)	16 (.630)	M12 x 1	14 (123.9)
QTM-BSS10X17X22	10 (.394)	17 (.669)	18.5 (.728)	22 (.866)	18 (.709)	M15 x 1	18 (159.3)
QTM-BSS11X17X22	11 (.433)	17 (.669)	18.5 (.728)	22 (.866)	18 (.709)	M15 x 1	18 (159.3)
QTM-BSS12X17X22	12 (.472)	17 (.669)	18.5 (.728)	22 (.866)	18 (.709)	M15 x 1	18 (159.3)
QTM-BSS14X20X28	14 (.551)	20 (.787)	23 (.906)	28 (1.102)	20 (.787)	M17 x 1	24 (212.4)
QTM-BSS15X20X28	15 (.591)	20 (.787)			20 (.787)	M17 x 1	24 (212.4)
QTE-BSS05X23X28	15.88 (.625)	23 (.906)	23 (.906)	28 (1.102)	26 (1.024)	M20 x 1	26 (230.1)
QTM-BSS16X23X28	16 (.630)	23 (.906)			26 (1.024)	M20 x 1	26 (230.1)
QTM-BSS17X23X28	17 (.669)	23 (.906)			26 (1.024)	M20 x 1	26 (230.1)
QTM-BSS19X25X28	19 (.748)	25 (.984)	23 (.906)	28 (1.102)	27 (1.063)	M22 x 1	29 (256.7)
QTM-BSS20X28X28	20 (.787)	28 (1.102)			30 (1.181)	M25 x 1	31 (274.4)

NOTE: Tolerances for diameters are before slitting

***O.D. Tolerance:**

8 & 10 mm	0	(+.0000)
	-0.015	(-.0006)
12 to 17 mm	0	(+.0000)
	-0.018	(-.0007)
20 to 28 mm	0	(+.0000)
	-0.021	(-.0008)

****Bore Tolerance:**

4 to 6 mm	+0.012	(+.0005)
	0	(-.0000)
6.35 to 10 mm	+0.015	(+.0006)
	0	(-.0000)
11 to 17 mm	+0.018	(+.0007)
	0	(-.0000)
19 to 20 mm	+0.021	(+.0008)
	0	(-.0000)

