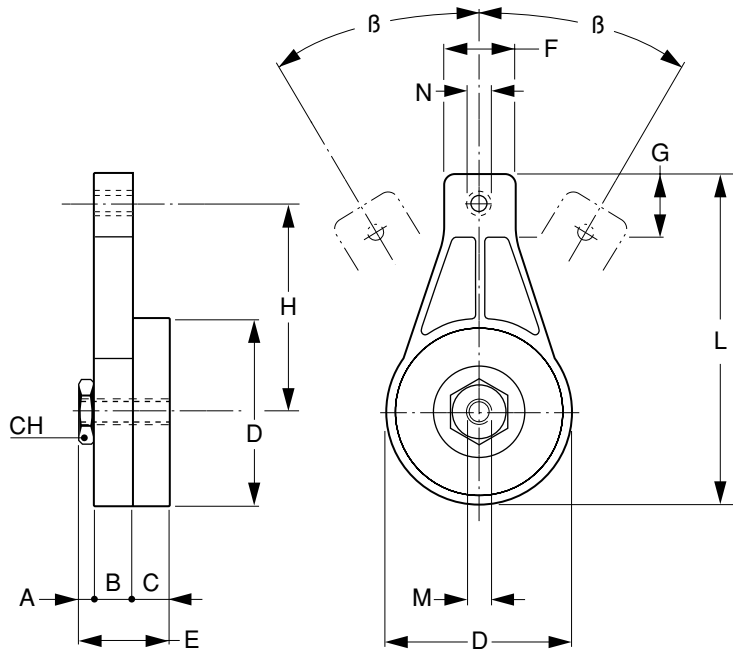




Quality  
Transmission  
Components

# TC Type Tensioner Arm

Spring-Loaded



Automatically keeps the tension constant.



See pages 3-30 thru 3-34 for available heads.

**MATERIAL: Arm** – QTA-TC0 – Acetal  
Others – High-Tensile Die-Cast Aluminum Alloy (See\*)

Catalog Number	Load (N)		A	B	C	CH	D	E	F	G	H	L	M	N	β
	Min	Max													
QTA-TC0M08*	80	160	5	15	15	24	63	35	23	23	75.5	119	M10	M8	45°
QTA-TC0M10*														M10	
QTA-TC0M12*														M12	
QTA-TC1M10	120	240	5	15.5	15.5	24	69	36	30	25	86.5	134	M10	M10	45°
QTA-TC1M12														M12	
QTA-TC1M16														M16	
QTA-TC2M10	240	380	7	18	18	27	90	43	34	30	100	159	M12	M10	30°
QTA-TC2M12														M12	
QTA-TC2M16														M16	
QTA-TC2M20														M20	

\*Material – Acetal

**NOTE:** Select N dimension to match the mounting bolt of the selected head (see pages 3-30 thru 3-34).

All dimensions are in mm unless otherwise noted.

BELT & CHAIN TENSIONERS

[www.econobelt.com](http://www.econobelt.com)



Quality Transmission Components

125 Railroad Avenue, Garden City Park, NY 11040-5016  
Phone: (516) 437-6700 • Fax: (516) 328-3343  
e-mail: [support@econobelt.com](mailto:support@econobelt.com)