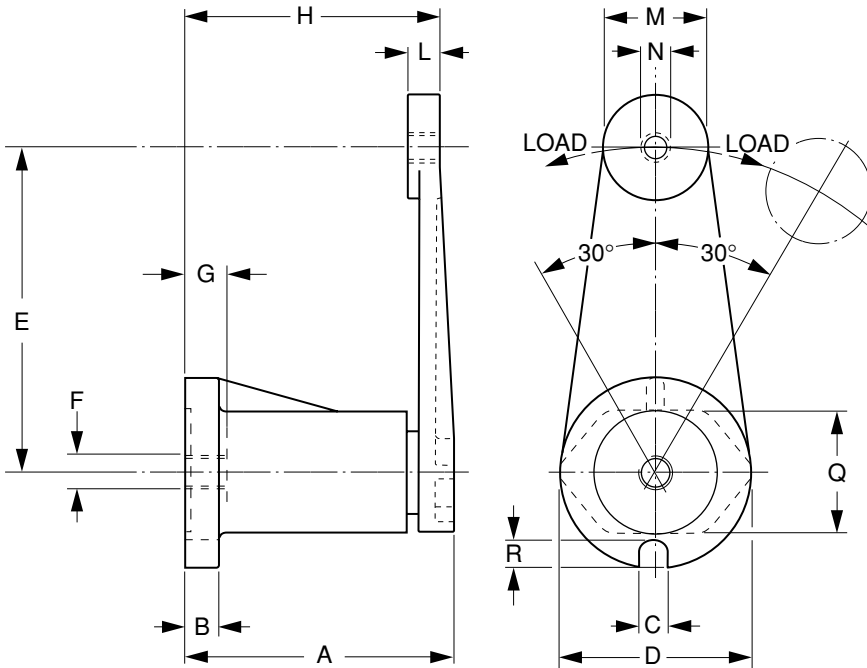


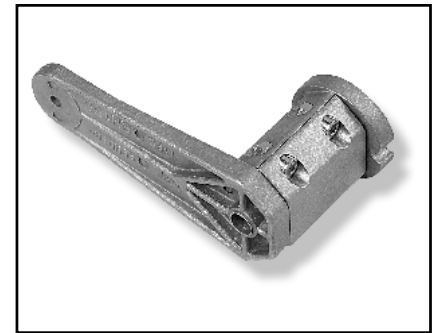


RH Type Tensioner Arm

Spring-Loaded



Automatically keeps the tension constant.



See pages 3-30, 3-31 & 3-34 for available heads.

MATERIAL: Arm – High-Tensile Die-Cast Aluminum Alloy

Catalog Number	Max Load (N)	A ±1	B	C	D	E	F	G	H ±1	L	M	N	Q	R
QTA-RH111M08	100	55	6	8	35	80	M6	8.5	51	8	22	M8	22	5
QTA-RH111M10												M10		
QTA-RH111M12												M12		
QTA-RH155M08	150	69	8	8.5	45	100	M8	10.5	64	8	28	M8	30	6
QTA-RH155M10												M10		
QTA-RH155M12												M12		
QTA-RH188M10	300	83	10.5	8.5	58	100	M10	13	78	10	32	M10	37	8
QTA-RH188M12												M12		
QTA-RH277M10	900	114	15	10.5	78	130	M12	17	107	12	50	M10	53	10
QTA-RH277M12												M12		
QTA-RH277M16												M16		

NOTE: Select N dimension to match the mounting bolt of the selected head (See pages 3-30, 3-31 & 3-34).

All dimensions are in mm unless otherwise noted.

