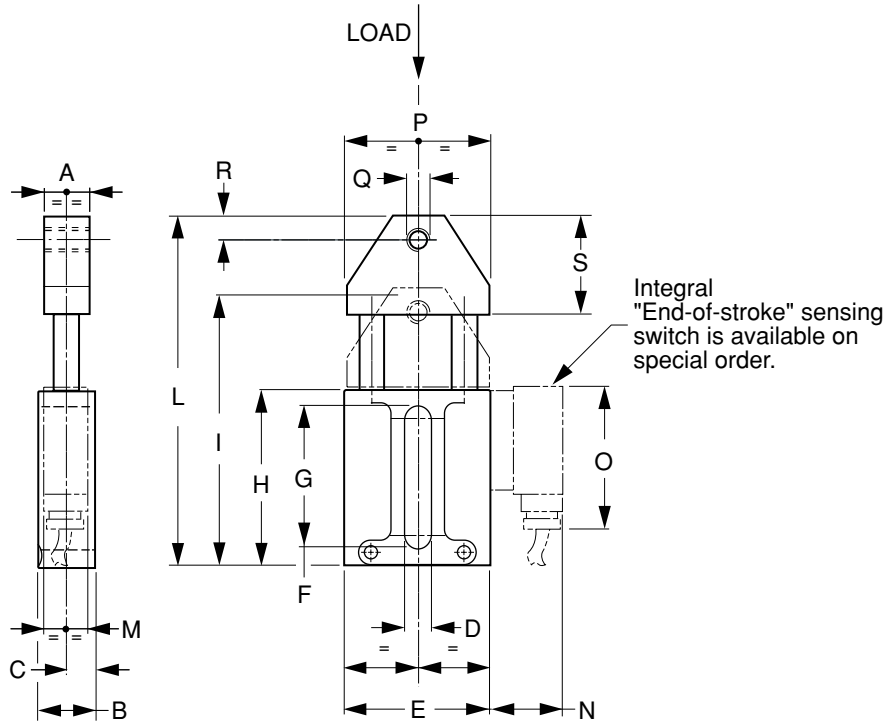




# ET Type Tensioner Arm

Spring-Loaded



Integral "End-of-stroke" sensing switch is available on special order.



**MATERIAL:** Base – High-Tensile Die-Cast Aluminum Alloy  
Mounting Head – Die-Cast Aluminum  
Slide Arms – High-Tensile Steel (Zinc Plated)

Catalog Number	Load (N)		A	B	C	D	E	F	G	H	I	L	P	Q	R	S	M	N	O
	Min	Max																	
QTA-ET1M08 QTA-ET1M10 QTA-ET1M12	130	250	20	23	12.5	11	56.2	7	58	74	109	137	60	M8 M10 M12	10	35	-	-	-
QTA-ET2M12	180	420	25	28	15	12.5	70.5	9	70	87	139	175	70	M12	12	50	-	-	-
QTA-ET3M12 QTA-ET3M14	300	650	30	33	17.5	14.5	82	9	86	104	165	207	80	M12 M14	14	60	21	35	70

All dimensions are in mm unless otherwise noted.

